

- REHABILITATION
- TAM EVO4C



TAM EVO4C : BIOFEEDBACK AND ELECTROTHERAPY COMPUTERIZED UNIT

TAM EVO4C

Reliability and high technology for the practitioner

Access a concentrate of technology and a strong reliability with the TAM EVO4C.

The software, easy to use and complete thanks to all the therapeutic tools available, will enjoy all practitioners.

TECHNOLOGY

RELIABILITY

EASY TO USE



Undisturbed Biofeedback signal displayed in real time and without latency.



Ergonomic, simple and user-friendly software interface.



Precise visualization of signals.



Complete protocols database.



Unparalleled stimulation comfort.



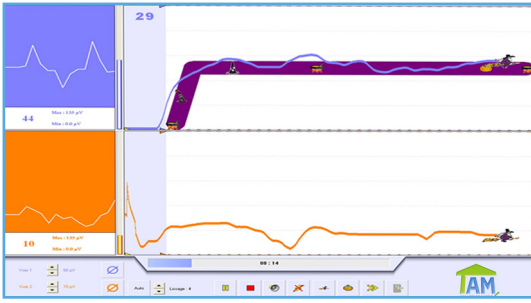
Up to 8 Ludics softwares to motivate your patients.

natech-group.com

Exclusive Distribution Natech Group



Your maternity experience



Undisturbed Biofeedback signal visualized in real time and without latency.

A tool of excellence

Concentrate of proven technology, the TAM EVO4C is recognized for its very high reliability:

- True and undisturbed EMG signal without latency between muscle contraction and its visualization at the screen;
- High sampling;
- Optimal signal processing;
- High accuracy of signals;
- Very comfortable electrostimulation.

The simple and user-friendly interface allows the most demanding practitioners to quickly perform highly effective treatments.

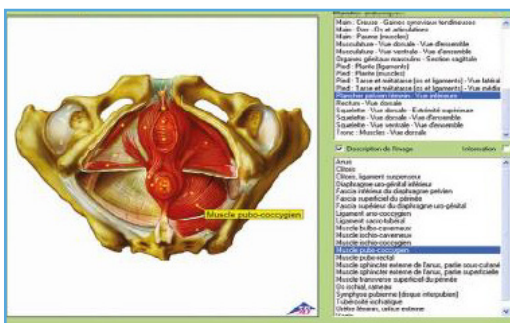
Reliability and simplicity

Recognized for its very high quality by users, the Biofeedback of the TAM EVO4C offers many possibilities in its daily use:

- Real-time visualization of the work performed by the patient on a computer screen;
- Saving of all results;
- Editable Biofeedback screens: adaptability in all circumstances depending of patient's ability and understanding;
- Integration of the results into complete assessments designed by famous teachers..



Reliability and high technology for the practitioner.



Detailed anatomical boards with zoom integrated.

Pelvic floor rehabilitation

Many protocols created by internationally renowned teachers for optimal quality of care in the fields:

- Urogynecology;
- Anorectal;
- Male urology;
- Sexology.

The intuitive and ergonomic software guides the practitioner in his daily use:

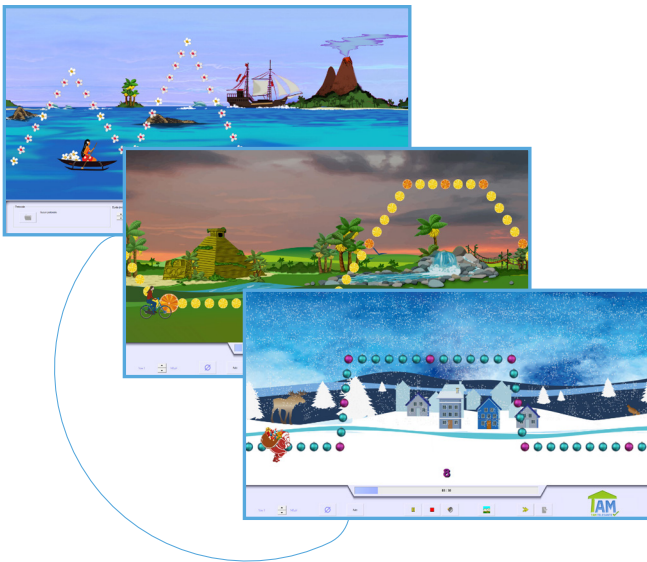
- Automatic calibration;
- Negative and sonorous biofeedback;
- Models and work objectives;
- Real time modification settings;
- Conditional stimulations;
- Sequence of biofeedback / stimulation phases;
- Patient assessments with history and statistics;
- Adaptation of the visualization of the biofeedback signal;
- Blind work;
- Etc.

Up to 8 ludic softwares

The 8 ludic softwares allow the practitioner to go further, especially for patient motivation and involvement in his rehabilitation. Thanks to the sonorous and / or visual patient destabilization tools, add to each session an additional difficulty in the required work while remaining fun and friendly.

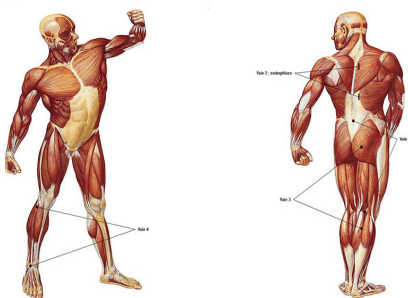
Choose a specific ludic software to work with slow fibers, then another for fast fibers.

The various biofeedback screens allow you to adapt the chosen screen to the possible understanding of your patient and thus ensure optimal quality of care.



Incentive playful biofeedback with animated targets and themes.

Scalique (4 voies)



Electrode placement with 4 stimulation generators.

Effectiveness in electrotherapy

The 4 independent generators offer the possibility to intervene simultaneously, in combination or alternately during muscle stimulation thanks to a combination of 4 different programs adapted to the patient.

In antalgia, they provide optimal analgesia by combining the different forms of known analgesic currents.

- Selection of treatments from a complete list of protocols classified by pathologies, with complete guide (placement of electrodes, treatment principles, recommended settings, etc.);
- The highly detailed anatomical boards help the practitioner in his care.

Technical characteristics

- 2 integrated EMG biofeedback channels: 0.1 to 10000 μ V.
- 3 air pressure biofeedback channels: 0.1 to 406 cmH₂O.
- 1 temperature biofeedback channel: 29 to 40°C.
- 4 channels / 4 stimulation generators: 30 μ s to 1600 ms / 1 to 2100 Hz.
- 1 ludic software.
- Alternated, combined ou simultaneous stimulations.
- Compensated rectangular biphasic pulse, monophasic +, monophasic – and interferential.
- Power supply : 100-240 VAC / 50-60 Hz.
- Software compatibility with Windows 7, 8, 8.1 and 10.
- USB port to connect the device to the computer.
- Warranty period: 2 years device; 1 year accessories.
- Device dimensions (LxWxH): 343x312x80 mm. Weight: 3.5 kgs.

Options :

- Temperature cable;
- Pressure boxes : 1, 2 or 3 channels;
- 4 or 8 ludic softwares.

Mains functions

- Creation of protocols, biofeedback work models, sessions, currents, expert mode.
- Biofeedback calibrations (before and during the session). Manual or automatic.
- Modification of parameters without stopping the biofeedback session.
- Negative and sonorous biofeedback, objectives placement and visual / sonorous limitations.
- Detailed anatomical boards with legend and integrated zoom.
- Triggering stimulation in biofeedback (with or without threshold, manual or automatic).
- Incentive playful biofeedback with themes and targets.
- 4 different Biofeedback programs (6 different visualizations in each program).
- Protocol guides.

Patient files, protocols and reports

- Management of patient files with history and review of sessions.
- Comparison of sessions by superimposition of curves.
- Multi-practitioner management.
- Creation of letters by pathology, exports of patient data.
- Midwife / Physiotherapist versions.
- Protocols included depending on version:
 - Urogynaecology, urology anorectal, sexology, traumatology, rheumatology, sports, vascular, aesthetics, hemiplegia, general currents;
 - Beginning and end of rehabilitation validation biofeedback.
- Assessments depending on version:
 - Pelvic floor (urogynaecology, urology, anorectal), urinary calendar, quality of life scales, (Contilife® and Ditrovie®);
 - Midwives: monitoring pregnancy, post-natal consultation, gynecological assessment.

References


- Options and configuration: contact us

 **TAM Télésanté**
479 Boulevard Maréchal Foch
13300 Salon-de-Provence, FRANCE

Carefully read the instructions in the instructions for use or on the labeling.
Must be used by qualified and trained healthcare professionals.



info@meditaliaservice.com
www.meditaliaservice.com
+39 3314605453
Via delle barozze 6 A
Rocca di Papa (RM)
Italia

 0459 Class IIa

natech-group.com



Natech Instruments SAS

479 Boulevard Maréchal Foch, 13300 Salon-de-Provence - FRANCE

Tel: +33 4 42 86 51 01 - Fax: +33 4 42 86 76 58 - Email : contact@natech-instruments.pro

VAT : FR94839836277 - Share capital : 1 000 €