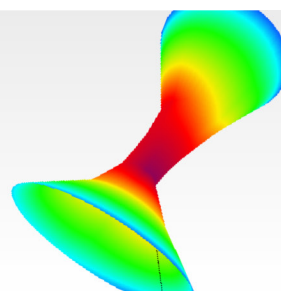
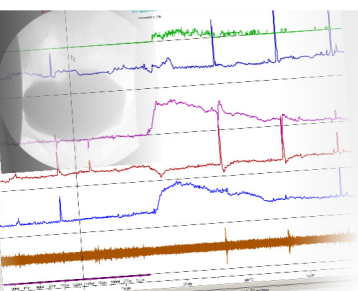


# SYSTEMS CATALOGUE

URODYNAMICS - GI MOTILITY - REFLUX MEASUREMENT



MAY 2016



LABORIE USA

Tel.: +1 802 857 1300

800 522 6743

Email: [usmarketing@laborie.com](mailto:usmarketing@laborie.com)

LABORIE EUROPE/INTERNATIONAL

Tel.: +31 53 4803700

Email: [info@laborie.com](mailto:info@laborie.com)

LABORIE HEADQUARTERS

Tel.: +1 905 612 1170

Email: [marketing@laborie.com](mailto:marketing@laborie.com)

Information in this catalogue is subject to change without prior notice.  
MMS cannot be held responsible for inaccuracies or typographical errors.

For certain products in certain countries sales restrictions may occur.  
This catalogue may contain information on worldwide products and services, not all of which are available in every location. A reference to a product or service in this document does not imply that such product or service is or will be available in your location. The products referred to in this document may be subject to different regulatory requirements depending on the country of use. Consequently certain sections of this document are intended only for certain kinds of expert users or only for audiences in certain countries. You should not construe anything in this document as a promotion or advertisement for any product or for the use of any product that is not authorized by the laws and regulations of your country of residence.

MMS is a registered trademark of Medical Measurement Systems B.V., Enschede, the Netherlands.



# Index

## Urodynamics

### Uroflowmeters

Flowmaster NS	(U1-1)	8
Flowstar NS	(U2-1)	10
Solar Uroflow system	(U4-6)	12
Flowtaker	(U10-1)	16

### Urodynamic Systems

Solar Blue, Table Top	(U3-1)	18
Solar Blue-Luna, Table Top	(U3-5)	22
Solar Blue, Laptop Integrated	(U3-3)	26
Solar Blue-Luna, Laptop Integrated	(U3-4)	30
Solar Smart BD, Pole mounted	(U4-1)	34
Solar Silver L4, Trolley system	(U4-2)	38
Solar Silver BD, Trolley System	(U4-3)	42
Solar Gold L4, Trolley System	(U4-4)	46
Solar Gold BD, Trolley system	(U4-5)	50
Nexam Pro WPU, Trolley System	(U8-3)	54
Nexam Pro CIM, Trolley System	(U8-4)	58

### Ambulatory Urodynamics

Luna	(U5-1)	64
------	--------	----

### Ultrasound Bladder Scanners

Scanmaster	(U6-1)	68
------------	--------	----

### Biofeedback Systems

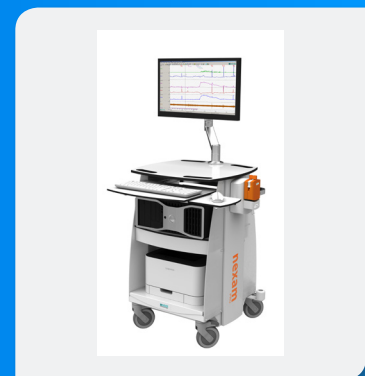
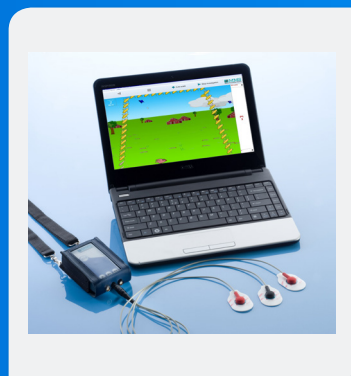
Solar Biofeedback system	(U4-7)	72
--------------------------	--------	----

### Accessories Urodynamics

74

### Pictures Urodynamics

77



# Index

## GI Motility & Reflux Measurement

### pH and pH-Impedance Recorders

Ohmega R pH	(G2-3)	86
Ohmega R	(G2-1)	88

### Conventional Manometry Systems

Solar GI LGI H <sub>2</sub> O, Compact Pole system	(G3-3)	92
Solar GI UGI H <sub>2</sub> O, Trolley system	(G3-5)	96
Solar GI LGI H <sub>2</sub> O, Trolley system	(G3-6)	100

### High Resolution Manometry Systems

Solar GI HRM H <sub>2</sub> O, 24p, Compact Pole system	(G3-7)	106
Solar GI HRM H <sub>2</sub> O, 24p, Trolley system	(G3-8)	110
Solar GI HRM H <sub>2</sub> O, 36p, Trolley system	(G3-12)	114
Solar GI HRM Solid State, Trolley system	(G3-9)	118
Solar GI HRM Solid State, Trolley system	(G3-10)	122

### High Resolution Anorectal Manometry Systems

Solar GI HRAM H <sub>2</sub> O, 24p, Trolley system	(G3-14)	128
Solar GI HRAM Solid State, Trolley system	(G3-15)	132

Accessories GI Motility & Reflux Measurement		136
--	--	-----

Pictures GI Motility & Reflux Measurement		139
---	--	-----



# Index

## Options and Software

Video options	144
Network, HIS link & DICOM options	148
Software upgrades	152
Options on request	153
Computer specifications	155
Compatibility list	157
MMS Software support	159

Computers and printers are not included in the systems. For computer specifications please refer to the 'Computer specifications' and 'Compatibility list' chapters.

Catheters are not included in the systems. For catheters and accessories (micturition chairs, catheters, pumptubes etc.), please refer to the 'MMS catheters and accessories catalogue'.



# UROFLOWMETERS

# Flowmaster NS (U1-1)

Wireless computer based digital flowmeter for fast, easy and convenient uroflowmetry.

No cables are required to connect the flowmeter to the computer.

Patient data and uroflow recordings are stored on the PC.

Scanmaster can be added to measure and store PVR results.



## System:

**Flowsensor:** Digital uroflow sensor with wireless Bluetooth connection and Bluetooth Dongle for PC. Funnel, urine container and height adjustable Flowstand included. The wireless uroflow sensor uses 4 AA batteries.

**English manuals:** Flowmaster User's & Service Manual, Flowmaster Quick Installation Guide

## Software:

Flowmaster database software:

- Secure storage of patient data
- Possibility to store patient data on the hospital network for automatic back up
- Investigation data from up to 7 (simultaneously used) Flowmasters can be stored in one database

Uroflowmetry software including:

- Automatic start of investigation when patient starts voiding
- Automatic artifact detection
- Automatic analysis
- Siroky flow rate nomograms
- Liverpool nomogram
- Miscolk nomogram
- Multi language support

*Scanmaster can be added to the Flowmaster for an integrated solution to measure and store PVR results automatically in the Flowmaster Database and print on the Uroflow report!*





### Additional hardware

Article	Picture	Description
Flowstand	✓	Flowstand, height adjustable (no funnel, no container)
Flowchair	✓	Micturition chair, height adjustable, plastic frame with lift-up armrests, ring to hold funnel and funnel with long spout
CHA181	✓	Micturition chair, folding, height adjustable
Flowchair-P	✓	Micturition chair for children, multi-color with wheels, armrests and detachable foot support
F3BT-PS	✓	Power supply for wireless Flow sensor, medical grade, with 2 m cable and EU, US, UK and AU mains plug. Alternative for batteries
Battery- AA-ALK		Battery, alkaline, AA (set of 25)

### Manuals

Article	Description
MAN-043	Flowmaster Benutzer- & Servicehandbuch (German)
MAN-044	Flowmaster Gebruikershandleiding (Dutch)

# Flowstar NS (U2-1)

Compact and portable digital flowmeter.

Designed for practical, everyday uroflowmetry, where ease of use, precision and low costs are top priorities.

Real time graph print out on thermal paper.



## System:

- Flowsensor:** Digital uroflow sensor with a 4 m cable, funnel and urine container.  
Medical grade power supply with EU, US, UK and AU mains plugs included.
- Built-in Thermal Printer:**
- Real time graph print out
  - Report reprint possibility
  - Print out in landscape or portrait mode
  - One roll of thermal printer paper included
- English manuals:** Flowstar User's & Service Manual, Inservice guide Flowstar

## Software:

Uroflow investigation and analysis software including:

- Uroflowmetry
- Adjustable flow and volume scales
- User selectable pre- and post-flow time
- Automatic or selectable scaling
- Automatic start of the investigation when patient starts voiding
- Automatic artifact detection
- Automatic analysis
- Siroky flow rate plot

### Additional hardware

Article	Picture	Description
Flowstand	✓	Flowstand, height adjustable (no funnel, no container)
Flowchair	✓	Micturition chair, height adjustable, plastic frame with lift-up armrests, ring to hold funnel and funnel with long spout
CHA181	✓	Micturition chair, folding, height adjustable
Flowchair-P	✓	Micturition chair for children, multi-color with wheels, armrests and detachable foot support

### Manuals

Article	Description
MAN-024	Flowstar Bedienungsanleitung (German)
MAN-023	Flowstar Gebruikers- & Servicehandleiding (Dutch)

# Solar Uroflow system (U4-6)

Wireless uroflowmetry system based on the Solar patient database platform.

With Solar Uroflow hospitals and private offices have the opportunity to store and analyze a large number of uroflow studies on multiple computers.

Wireless EMG recording can be added to the Solar Uroflow system.



## System:

**Flowsensor:** Digital uroflow sensor with wireless Bluetooth connection and Bluetooth Dongle for PC. Funnel, urine container and height adjustable Flowstand included. The wireless uroflow sensor uses 4 AA batteries.

**English manuals:** Solar Uro User's manual, Solar Uro/GI Service and Installation manual

## Software:

Solar software

- Solar Basic Patient database software
- Hardware diagnostic software

Urodynamic investigation and analysis software

- Uroflowmetry
- Uroflowmetry combined with wireless EMG recording

**Note:** Please order AO-WPM if you would like to measure EMG.

The Solar Uroflow system can be combined with:

- Query Module for the database
- Network options like HL7 import & export
- Scanmaster for an integrated solution to measure and store PVR results automatically in the Database and print on Uroflow report!

### Additional packages

Article	Picture	Description
AO-WPM		<b>Solar wireless EMG/Pressure package</b> Solar software for EMG 1st and 2nd channel. Wireless Solar module with connectors for 1 pressure channel and 2 EMG channels. Including 2 guarded EMG cables Lemo-3 with 3 leads (60 cm) and a carrying bag.

### Additional hardware

Article	Picture	Description
Flowchair	✓	Micturition chair, height adjustable, plastic frame with lift-up armrests, ring to hold funnel and Funnel with long spout
CHA181	✓	Micturition chair, folding, height adjustable
Flowchair-P	✓	Micturition chair for children, multi-color with wheels, armrests and detachable foot support
F3BT-PS	✓	Power supply for wireless Flow sensor, medical grade, with 2 m cable and EU, US, UK and AU mains plug. Alternative for batteries.
Battery-AA-ALK		Battery, alkaline, AA (set of 25)

### Additional software

Article	Description
NET 600	Network analysis Software for first 2 users
SSP-Bio	Biofeedback software
SSP-QM	Query Module: Database filter and Query options
SSP-TC	Templates and Comments <ul style="list-style-type: none"><li>• Templates for design of standard letters</li><li>• Additional and Medical Comments</li></ul>

### Manuals

Article	Description
MAN-120	Solar Manuel d'Utilisation (French)
MAN-046	Solar Benutzerhandbuch (German)
MAN-045	Solar Gebruikershandleiding (Dutch)
MAN-140	HIS/EMR integration Users & Installation manual



# Flowtaker (U10-1)

Unique single-patient uroflowmeter for home use.

Simple to use in the comfort of the patient's own bathroom.

Home uroflowmetry can enhance conventional treatment.

Obtains multiple flow traces and generates an automated voiding diary.

The sensor can be returned to the clinic by mail or in person.



## System:

The Flowtaker (box of 10) includes:

Items for patients:

- 10x Flowtaker sensors
- 10x Return envelopes
- 10x Urine containers
- 10x Instructions for use for the patient
- 10x Carrying bags

Items for the physician:

- Flowtaker software installation CD
- USB cable for downloading flow studies
- Sensor registration form + identification labels

English manuals:

Flowtaker User's & Installation Manual

## Software:

Flowtaker database software

Flowtaker investigation and analysis software:

- Uroflowmetry
- Automatic artifact detection
- Automatic analysis
- Liverpool nomogram
- Voiding diary
- Statistical analysis
- Customizable report

## Manuals

Article	Description
MAN-176	Flowtaker Benutzer & Installations Handbuch (German)
MAN-177	Flowtaker Gebruikers & Installatie handleiding (Dutch)



# URODYNAMIC SYSTEMS

# Solar Blue, Table top (U3-1)

Wireless, portable and very easy to use full-function urodynamic system.

Smallest and most cost-effective set-up, minimum office space required.



## System:

**Solar Blue Module:** Includes a 4 roll infusion pump, 4 pressure channels with Lemo-4 connector, 1 EMG connector and an Infrared receiver. Medical grade power supply with EU, US, UK and AU mains plugs and USB cable are included.  
**Note:** Please order AO-SBL EMG if you would like to measure EMG.

**Flowsensor:** Digital uroflow sensor with wireless Bluetooth connection and Bluetooth Dongle for PC. Funnel, urine container and height adjustable Flowstand included. The wireless uroflow sensor uses 4 AA batteries.

**Remote control:** Infrared remote control RC-1200 (blue)

**English manuals:** Solar Blue User's manual, Solar Blue Service & Installation manual

## Software:

Solar software:

- Solar Blue Patient database software
- Query Module: Database filter and Query options
- Stationary Urodynamic investigation software
- 9 Protocols for each test
- Stationary Urodynamic analysis software
- Hardware diagnostic software

Urodynamic investigation and analysis software:

- Uroflowmetry software
- Cystometry software (CMG)
- Pressure/Flow software

*Solar Blue can also be combined with Luna (U5-1) for wireless recording of pressures and EMG and/or easy ambulatory prolongation of conventional urodynamics!*

# Solar Blue, Table top (U3-1)

## Add-ons

### Additional packages

Article	Picture	Description
AO-BPM Medlab		Blood Pressure and SpO2 interface software for (Medlab) Vitro, including manual
AO-BPM Nonin		Blood Pressure and SpO2 interface software for (Nonin) Avant 2120, including manual
AO-Luna Belt		Water transducer belt for Luna
AO-SBL UPP WP2	✓	<b>Solar Blue wireless Urethral Pressure Profile (UPP) Puller stand package</b> Wireless Catheter Puller and Puller stand, height adjustable with clamp. UPP software, Gynecology software (combination study) and additional UPP parameters (Dr. Eberhard analysis and Transmission Profile Graph).
AO-UPP Manual Pull		<b>Solar Urethral Pressure Profile (UPP) manual pull package</b> UPP software, Gynecology software (combination study) and additional UPP parameters (Dr. Eberhard analysis and Transmission Profile Graph).
AO-Pura Perfusion Set		<b>Pressure Cuff and Flow reducer set for Urethra perfusion</b> Pressure cuff for UPP perfusion with UPP flow reducer set.
AO-SBL EMG		<b>Solar Blue EMG package</b> Solar Blue software for 1 EMG channel. Guarded EMG cable with DIN-5 plug and 3 leads (180 cm).
AO-SBL EMG 2C		<b>Solar Blue EMG package with classic EMG cable</b> Solar Blue software for 1 EMG channel. Guarded EMG cable with DIN 42802 + DIN 5 (EMGC-D5-TP). EMG cable with press studs + DIN 42802 (EMGC-TP-SUR).

# Solar Blue, Table top (U3-1)

## Add-ons

### Additional hardware

Article	Picture	Description
MMS 84-381	✓	Memscap transducer holder for 4 transducers with screw clamp, ø 22 mm
682274/093	✓	B-D transducer holder for 4x DT-XX/DT-NN/TNF-R transducers, with screw clamp, ø 38 mm
DTX-1023-100	✓	Interface cable for DT-XX/DT-NN/TNF-R transducers, length 1 meter
S Pole III		Solar Pole on wheelbase, ø 38 mm
SSC-24	✓	Clamp to mount Solar Blue module to ø38 mm pole (S Pole III), including hook for waterbag
SSC-H	✓	2 hooks for a waterbag/pressure cuff. Can be mounted to a ø38 mm pole (S Pole III and S Pole IV).
SBL-TRDH	✓	Transducer holder for DT-XX or Memscap for 4 transducers, with clip clamp, ø 25 mm and ø 38 mm
SBL-Battery	✓	Rechargeable battery pack for Solar Blue
F3BT-PS	✓	Power supply for wireless Flow sensor, medical grade, with 2 m cable and EU, US, UK and AU mains plug. Alternative for batteries.
SDC-4	✓	MMS bus cable, 4 meter for wired setup of the flowsensor
Battery-AA-ALK		Battery, alkaline, AA (set of 25)
Flowchair		Micturition chair, height adjustable, plastic frame with lift-up armrests
Flowchair-P		Micturition chair for children, multi-color, wheels, armrests, detachable foot support
CHA181	✓	Micturition chair, folding, height adjustable



*Solar Blue can be mounted on a robust pole...  
...by adding the S Pole III and a mounting clamp for the Solar Blue Module (choice of SSC-24 or SSC-22)!*

### Additional software

Article	Description
NET 600	Network analysis Software for first 2 users
SBS-Bio	Biofeedback software Solar Blue
SSP-Anal	Anorectal manometry software
SSP-3D	3D Vector Volume Plot software
SSP-AP	Additional Parameters <ul style="list-style-type: none"><li>• Initial bladder filling</li><li>• 5 compliance markers instead of 1</li><li>• Detrusor Volume Plot</li><li>• Detrusor/Flow plots Griffiths and W/F-Graph</li><li>• UPP Transmission graph and report</li></ul>
SSP-TC	Templates and Comments <ul style="list-style-type: none"><li>• Templates for design of standard letters</li><li>• Additional and Medical Comments</li></ul>

### Manuals

Article	Description
MAN-140	HIS/EMR integration Users & Installation manual
MAN-115	Solar Blue Manuel d'Utilisation (French)
MAN-095	Solar Blue Benutzerhandbuch (German)
MAN-096	Solar Blue Gebruikershandleiding (Dutch)

# Solar Blue-Luna, Table top (U3-5)

Wireless, portable and very easy to use full-function urodynamic system.

Smallest and most cost-effective set-up, minimum office space required.

Wireless recording of Pressures and EMG with Luna.



## System:

- Solar Blue Module:** Includes a 4 roll infusion pump, 4 pressure channels with Lemo-4 connector, 1 EMG connector and an Infrared receiver.  
Medical grade power supply with EU, US, UK and AU mains plugs and USB cable are included.  
**Note:** Please order AO-SBL EMG if you would like to measure EMG.
- Luna:** Wireless interface module containing 3 pressure channels with Lemo-4 connector and 1 EMG channel.  
**Note:** Please order AO-Luna EMG if you would like to measure EMG.
- Flowsensor:** Digital uroflow sensor with wireless Bluetooth connection and Bluetooth Dongle for PC. Funnel, urine container and height adjustable Flowstand included.  
The wireless uroflow sensor uses 4 AA batteries.
- Remote control:** Infrared remote control RC-1200 (blue)
- English manuals:** Solar Blue User's manual, Solar Blue Service & Installation manual

## Software:

Solar software:

- Solar Blue Patient database software
- Query Module: Database filter and Query options
- Stationary Urodynamic investigation software
- 9 Protocols for each test
- Stationary Urodynamic analysis software
- Hardware diagnostic software

Urodynamic investigation and analysis software:

- Uroflowmetry software
- Cystometry software (CMG)
- Pressure/Flow software.

# Solar Blue-Luna, Table top (U3-5)

## Add-ons

### Additional packages

Article	Picture	Description
AO-SBL UPP WP2	✓	<b>Solar Blue wireless Urethral Pressure Profile (UPP) Puller stand package</b> Wireless Catheter Puller and Puller stand, height adjustable with clamp. UPP software, Gynecology software (combination study) and additional UPP parameters (Dr. Eberhard analysis and Transmission Profile Graph).
AO-UPP Manual Pull		<b>Solar Urethral Pressure Profile (UPP) manual pull package</b> UPP software, Gynecology software (combination study) and additional UPP parameters (Dr. Eberhard analysis and Transmission Profile Graph).
AO-Pura Perfusion Set		<b>Pressure Cuff and Flow reducer set for Urethra perfusion</b> Pressure cuff for UPP perfusion with UPP flow reducer set.
AO-SBL EMG		<b>Solar Blue EMG package</b> Solar Blue software for 1 EMG channel. Guarded EMG cable with DIN-5 plug and 3 leads (180 cm).
AO-SBL EMG 2C		<b>Solar Blue EMG package with classic EMG cable</b> Solar Blue software for 1 EMG channel. Guarded EMG cable with DIN 42802 + DIN 5 (EMGC-D5-TP). EMG cable with press studs + DIN 42802 (EMGC-TP-SUR).
AO-Luna EMG		<b>Luna EMG Package</b> Software for EMG 1 channel. Guarded EMG cable Lemo-3 with 3 leads (60 cm).
AO-Luna Belt		<b>Water transducer belt for Luna</b>
AO-BPM Medlab		<b>Blood Pressure and SpO2 interface software for (Medlab) Vitro, including manual</b>
AO-BPM Nonin		<b>Blood Pressure and SpO2 interface software for (Nonin) Avant 2120, including manual</b>

# Solar Blue-Luna, Table top (U3-5)

## Add-ons

### Additional hardware

Article	Picture	Description
AMB P-BAG	✓	Pediatric multi-color leather carrying bag
682274/093	✓	B-D transducer holder for 4x DT-XX/DT-NN/TNF-R transducers, with screw clamp, ø 38 mm
SBL-TRDH	✓	Transducer holder for DT-XX or Memscap for 4 transducers, with clip clamp, ø 25 mm and ø 38 mm
DTX-1023-100	✓	Interface cable for DT-XX/DT-NN/TNF-R transducers, length 1 meter
S Pole III		Solar Pole on wheelbase, ø 38 mm
SSC-24	✓	Clamp to mount Solar Blue module to ø38 mm pole (S Pole III), including hook for waterbag
SSC-H	✓	2 hooks for a waterbag/pressure cuff. Can be mounted to a ø38 mm pole (S Pole III and S Pole IV)
SBL-Battery	✓	Rechargeable battery pack for Solar Blue
F3BT-PS	✓	Power supply for wireless Flow sensor, medical grade, with 2 m cable and EU, US, UK and AU mains plug. Alternative for batteries.
SDC-4	✓	MMS bus cable, 4 meter for wired setup of the flowsensor
Battery-AA-ALK		Battery, alkaline, AA (set of 25)
Flowchair		Micturition chair, height adjustable, plastic frame with lift-up armrests
Flowchair-P		Micturition chair for children, multi-color, wheels, armrests, detachable foot support
MMS 84-381		Memscap transducer holder for 4 transducers, including screw clamp ø 22 mm
CHA181	✓	Micturition chair, folding, height adjustable



*Solar Blue can be mounted on a robust pole...  
...by adding the S Pole III and a mounting clamp for the Solar Blue Module (choice of SSC-24 or SSC-22 plus SSC-7t)!*



### Additional software

Article	Description
NET 600	Network analysis Software for first 2 users
SBS-Bio	Biofeedback software Solar Blue
SSP-Anal	Anorectal manometry software
SSP-3D	3D Vector Volume Plot software
SSP-AP	Additional Parameters <ul style="list-style-type: none"><li>• Initial bladder filling</li><li>• 5 compliance markers instead of 1</li><li>• Detrusor Volume Plot</li><li>• Detrusor/Flow plots Griffiths and W/F-Graph</li><li>• UPP Transmission graph and report</li></ul>
SSP-TC	Templates and Comments <ul style="list-style-type: none"><li>• Templates for design of standard letters</li><li>• Additional and Medical Comments</li></ul>

### Manuals

Article	Description
MAN-140	HIS/EMR integration Users & Installation manual
MAN-115	Solar Blue Manuel d'Utilisation (French)
MAN-095	Solar Blue Benutzerhandbuch (German)
MAN-096	Solar Blue Gebruikershandleiding (Dutch)

# Solar Blue, Laptop integrated (U3-3)

Wireless and very easy to use full-function urodynamic system.

Mounted on a robust pole with small footprint.

PC/Printer integrated solution.



## System:

- Solar Blue Module:** Includes a 4 roll infusion pump, 4 pressure channels with Lemo-4 connector, 1 EMG connector and an Infrared receiver.  
**Note:** Please order AO-SBL EMG if you would like to measure EMG.
- Flowsensor:** Digital uroflow sensor with wireless Bluetooth connection and Bluetooth Dongle for PC. Funnel, urine container and height adjustable Flowstand included.  
The wireless uroflow sensor uses 4 AA batteries.
- Integrated pole:** Solar Pole IV (ø 38 mm, 85 cm) on wheelbase with 4 double roll wheels and wheel brakes. Laptop shelf, splash screen and base box for safety module.
- Remote control:** Infrared remote control (RC-1200, blue)
- English manuals:** Solar Blue User's manual, Solar Blue Service & Installation manual, Assembly instructions
- Standard included:** Solar Blue safety set (115V or 230V)  
Mounting clamps, cables and power cord (EU or US)

## Software:

Solar software:

- Solar Blue Patient database software
- Query Module: Database filter and Query options
- Stationary Urodynamic investigation software
- 9 Protocols for each test
- Stationary Urodynamic analysis software
- Hardware diagnostic software

Urodynamic investigation and analysis software:

- Uroflowmetry software
- Cystometry software (CMG)
- Pressure/Flow software

# Solar Blue, Laptop integrated (U3-3)

## Add-ons

### Additional packages

Article	Picture	Description
AO-SBL UPP WP2	✓	<b>Solar Blue wireless Urethral Pressure Profile (UPP) Puller stand package</b> Wireless Catheter Puller and Puller stand, height adjustable with clamp. UPP software, Gynecology software (combination study) and additional UPP parameters (Dr. Eberhard analysis and Transmission Profile Graph).
AO-UPP Manual Pull		<b>Solar Urethral Pressure Profile (UPP) manual pull package</b> UPP software, Gynecology software (combination study) and additional UPP parameters (Dr. Eberhard analysis and Transmission Profile Graph).
AO-Pura Perfusion Set		<b>Pressure Cuff and Flow reducer set for Urethra perfusion</b> Pressure cuff for UPP perfusion with UPP flow reducer set.
AO-SBL EMG		<b>Solar Blue EMG package</b> Solar Blue software for 1 EMG channel. Guarded EMG cable with DIN-5 plug and 3 leads (180 cm).
AO-SBL EMG 2C		<b>Solar Blue EMG package with classic EMG cable</b> Solar Blue software for 1 EMG channel. Guarded EMG cable with DIN 42802 + DIN 5 (EMGC-D5-TP). EMG cable with press studs + DIN 42802 (EMGC-TP-SUR).
AO-TRDH PL	✓	<b>Water Transducer Holder and Pole</b> Transducer Holder DT-XX or Memscap (with clip clamp and mounting plate) and Transducer Holder Pole.
AO-BPM Medlab		<b>Blood Pressure and SpO2 interface software for (Medlab) Vitro, including manual</b>
AO-BPM Nonin		<b>Blood Pressure and SpO2 interface software for (Nonin) Avant 2120, including manual</b>
AO-Luna Belt		<b>Water transducer belt for Luna</b>

*Solar Blue can also be combined with Luna (U5-1) for wireless recording of pressures and EMG and/or easy ambulatory prolongation of conventional urodynamics!*

### Additional hardware

Article	Picture	Description
682274/093	✓	B-D transducer holder for 4x DT-XX/DT-NN/TNF-R transducers, with screw clamp, ø 38 mm
SBL-TRDH	✓	Transducer holder for DT-XX or Memscap for 4 transducers, with clip clamp, ø 25 mm and ø 38 mm
DTX-1023-100	✓	Interface cable for DT-XX/DT-NN/TNF-R transducers, length 1 meter
SSC-H	✓	2 hooks for a waterbag/pressure cuff. Can be mounted to a ø38 mm pole (S Pole III and S Pole IV).
F3BT-PS	✓	Power supply for wireless Flow sensor, medical grade, with 2 m cable and EU, US, UK and AU mains plug. Alternative for batteries.
Mouse Tray	✓	Mouse tray for laptop shelf
SDC-4	✓	MMS bus cable, 4 meter for wired setup of the flowsensor
Battery-AA-ALK		Battery, alkaline, AA (set of 25)
Flowchair		Micturition chair, height adjustable, plastic frame with lift-up armrests
Flowchair-P		Micturition chair for children, multi-color, wheels, armrests, detachable foot support
CHA181	✓	Micturition chair, folding, height adjustable

### Additional software

Article	Description
SBS-Bio	Biofeedback software Solar Blue
SSP-Anal	Anorectal manometry software
SSP-3D	3D Vector Volume Plot software
SSP-AP	Additional Parameters <ul style="list-style-type: none"><li>• Initial bladder filling</li><li>• 5 compliance markers instead of 1</li><li>• Detrusor Volume Plot</li><li>• Detrusor/Flow plots Griffiths and W/F-Graph</li><li>• UPP Transmission graph and report</li></ul>
SSP-TC	Templates and Comments <ul style="list-style-type: none"><li>• Templates for design of standard letters</li><li>• Additional and Medical Comments</li></ul>
NET 600	Network analysis Software for first 2 users

### Manuals

Article	Description
MAN-140	HIS/EMR integration Users & Installation manual
MAN-115	Solar Blue Manuel d'Utilisation (French)
MAN-095	Solar Blue Benutzerhandbuch (German)
MAN-096	Solar Blue Gebruikershandleiding (Dutch)

# Solar Blue-Luna, Laptop integrated (U3-4)

Very easy to use, full-function urodynamic system.

Wireless recording of Pressures and EMG with Luna.

PC/printer integrated solution on a small footprint.



## System:

- Solar Blue Module:** Includes a 4 roll infusion pump, 4 pressure channels with Lemo-4 connector, 1 EMG connector and an Infrared receiver.  
**Note:** Please order AO-SBL EMG if you would like to measure EMG.
- Luna:** Wireless interface module containing 3 pressure channels with Lemo-4 connector and 1 EMG channel.  
**Note:** Please order AO-Luna EMG if you would like to measure EMG.
- Flowsensor:** Digital uroflow sensor with wireless Bluetooth connection and Bluetooth Dongle for PC. Funnel, urine container and height adjustable Flowstand included.  
The wireless uroflow sensor uses 4 AA batteries.
- Integrated pole:** Solar Pole IV (ø 38 mm, 85 cm) on wheelbase with 4 double roll wheels and wheel brakes. Laptop shelf, splash screen and base box for safety module.
- Remote control:** Infrared remote control RC-1200 (blue)
- English manuals:** Solar Blue User's manual, Solar Blue Service & Installation manual, Assembly instructions
- Standard included:** Solar Blue safety set (115V or 230V)  
Mounting clamps, cables and power cord (EU or US).

## Software:

Solar software:

- Solar Blue Patient database software
- Query Module: Database filter and Query options
- Stationary Urodynamic investigation software
- 9 Protocols for each test
- Stationary Urodynamic analysis software
- Hardware diagnostic software

Urodynamic investigation and analysis software:

- Uroflowmetry software
- Cystometry software (CMG)
- Pressure/Flow software

### Additional packages

Article	Picture	Description
AO-SBL UPP WP2	✓	<b>Solar Blue wireless Urethral Pressure Profile (UPP) Puller stand package</b> Wireless Catheter Puller and Puller stand, height adjustable with clamp. UPP software, Gynecology software (combination study) and additional UPP parameters (Dr. Eberhard analysis and Transmission Profile Graph).
AO-UPP Manual Pull		<b>Solar Urethral Pressure Profile (UPP) manual pull package</b> UPP software, Gynecology software (combination study) and additional UPP parameters (Dr. Eberhard analysis and Transmission Profile Graph).
AO-Pura Perfusion Set		<b>Pressure Cuff and Flow reducer set for Urethra perfusion</b> Pressure cuff for UPP perfusion with UPP flow reducer set.
AO-SBL EMG		<b>Solar Blue EMG package</b> Solar Blue software for 1 EMG channel. Guarded EMG cable with DIN-5 plug and 3 leads (180 cm).
AO-SBL EMG 2C		<b>Solar Blue EMG package with classic EMG cable</b> Solar Blue software for 1 EMG channel. Guarded EMG cable with DIN 42802 + DIN 5 (EMGC-D5-TP). EMG cable with press studs + DIN 42802 (EMGC-TP-SUR).
AO-Luna EMG		<b>Luna EMG Package</b> Software for EMG 1 channel. Guarded EMG cable Lemo-3 with 3 leads (60 cm).
AO-Luna Belt		<b>Water transducer belt for Luna</b>
AO-TRDH PL	✓	<b>Water Transducer Holder and Pole</b> Transducer Holder DT-XX or Memscap (with clip clamp and mounting plate) and Transducer Holder Pole.
AO-BPM Medlab		<b>Blood Pressure and SpO2 interface software for (Medlab) Vitro, including manual</b>
AO-BPM Nonin		<b>Blood Pressure and SpO2 interface software for (Nonin) Avant 2120, including manual</b>

### Additional hardware

Article	Picture	Description
AMB P-BAG	✓	Pediatric multi-color leather carrying bag
LUN-Cond		Luna Conductance interface for automatic leakage detection <b>Note:</b> only available in combination with special solid state catheter
682274/093	✓	B-D transducer holder for 4x DT-XX/DT-NN/TNF-R transducers, with screw clamp, ø 38 mm
SBL-TRDH		Transducer holder for DT-XX or Memscap for 4 transducers, with clip clamp, ø 25 mm and ø 38 mm
DTX-1023-100		Interface cable for DT-XX/DT-NN/TNF-R transducers, length 1 meter
SSC-H		2 hooks for a waterbag/pressure cuff. Can be mounted to a ø38 mm pole (S Pole III and S Pole IV)
F3BT-PS	✓	Power supply for wireless Flow sensor, medical grade, with 2 m cable and EU, US, UK and AU mains plug. Alternative for batteries
Mouse Tray	✓	Mouse tray for laptop shelf
SDC-4	✓	MMS bus cable, 4 meter for wired setup of the flowsensor
Battery-AA-ALK		Battery, alkaline, AA (set of 25)
Flowchair		Micturition chair, height adjustable, plastic frame with lift-up armrests
Flowchair-P		Micturition chair for children, multi-color, wheels, armrests, detachable foot support
CHA181	✓	Micturition chair, folding, height adjustable



### Additional software

Article	Description
NET 600	Network analysis Software for first 2 users
SBS-Bio	Biofeedback software Solar Blue
SSP-Anal	Anorectal manometry software
SSP-3D	3D Vector Volume Plot software
SSP-AP	Additional Parameters <ul style="list-style-type: none"><li>• Initial bladder filling</li><li>• 5 compliance markers instead of 1</li><li>• Detrusor Volume Plot</li><li>• Detrusor/Flow plots Griffiths and W/F-Graph</li><li>• UPP Transmission graph and report</li></ul>
SSP-TC	Templates and Comments <ul style="list-style-type: none"><li>• Templates for design of standard letters</li><li>• Additional and Medical Comments</li></ul>

### Manuals

Article	Description
MAN-140	HIS/EMR integration Users & Installation manual
MAN-115	Solar Blue Manuel d'Utilisation (French)
MAN-095	Solar Blue Benutzerhandbuch (German)
MAN-096	Solar Blue Gebruikershandleiding (Dutch)

# Solar Smart BD, Pole mounted (U4-1)

Cost-effective urodynamic system with minimal space requirement.

Mounted on a pole with a small footprint, easy to move around.

Solar Smart BD is ready to use water perfused catheters and pressure transducers with Argon (formerly Becton-Dickinson) connectors.



## System:

- Interface Module:** Solar Combination Interface Module (CIM) with 4 pressure channels with Argon connector, 1 EMG channel and Water transducer holder.  
Clamp and cable included.  
**Note:** Please order AO-EMG if you would like to measure EMG.
- Pump:** Digital 4 roll Pump & Infused Volume Module
- U2M:** Solar U2M Main Module with 5 ports and infrared receiver.  
Medical grade power supply for U2M with EU, US, UK and AU mains plugs included.
- Flowsensor:** Digital uroflow sensor with wireless Bluetooth connection and Bluetooth Dongle for PC.  
Funnel, urine container and height adjustable Flowstand included.  
The wireless uroflow sensor uses 4 AA batteries.
- Pole mounted:** Solar Pole III (ø 38 mm, 130 cm) on wheelbase with 4 double roll wheels and wheel brakes.
- Remote control:** Infrared remote control RC-1200 (blue)
- English manuals:** Solar Uro User's manual, Solar Uro/GI Service & Installation manual

## Software:

Solar software:

- Solar Smart Patient database software
- Query Module: Database filter and Query options
- Stationary Urodynamic investigation software
- 9 Protocols for each test
- Stationary Urodynamic analysis software
- Hardware diagnostic software

Urodynamic investigation and analysis software:

- Uroflowmetry software
- Cystometry software (CMG)
- Pressure/Flow software

# Solar Smart BD, Pole mounted (U4-1)

## Add-ons

### Additional packages

Article	Picture	Description
AO-UPP C1	✓	<b>Solar Urethral Pressure Profile (UPP) Pole package</b> Catheter Puller, including mounting clamp for Solar Pole. UPP software, Gynecology software (combination study) and additional UPP parameters (Dr. Eberhard analysis and Transmission Profile Graph).
AO-UPP Manual Pull		<b>Solar Urethral Pressure Profile (UPP) manual pull package</b> UPP software, Gynecology software (combination study) and additional UPP parameters (Dr. Eberhard analysis and Transmission Profile Graph).
AO-Pura Perfusion Set		<b>Pressure Cuff and Flow reducer set for Urethra perfusion</b> Pressure cuff for UPP perfusion with UPP flow reducer set.
AO-EMG		<b>Solar EMG package</b> Solar software for EMG 1 channel. Guarded EMG cable with DIN-5 plug and 3 leads (180 cm).
AO-EMG HS		<b>High speed EMG for CIM, 10 kHz</b> Software to measure and display High speed/frequency EMG signals. <b>Note:</b> Please order AO-EMG too.
AO-BPM Medlab		<b>Blood Pressure and SpO2 interface software for (Medlab) Vitro, including manual</b>
AO-BPM Nonin		<b>Blood Pressure and SpO2 interface software for (Nonin) Avant 2120, including manual</b>
AO-EMG 2C		<b>EMG package with classic EMG cable (EMGC-D5-TP, EMGC-TP-SUR)</b> Software for EMG 1 channel Guarded EMG cable for 3 electrodes with DIN 42802 and DIN-5 connector, 180 cm Guarded EMG cable with press stud and DIN 42802, 30 cm, set of 3
AO-Luna Belt		<b>Water transducer belt for Luna</b>

# Solar Smart BD, Pole mounted (U4-1)

## Add-ons

### Additional hardware

Article	Picture	Description
CIM-A-C		Addition for CIM: conductance for automated leak point pressures detection, Lemo-3
F3BT-PS	✓	Power supply for wireless Flow sensor, medical grade, with 2 m cable and EU, US, UK and AU mains plug. Alternative for batteries.
SDC-4	✓	MMS bus cable, 4 meter for wired setup of the flowsensor
Battery-AA-ALK		Battery, alkaline, AA (set of 25)
Flowchair		Micturition chair, height adjustable, plastic frame with lift-up armrests
Flowchair-P		Micturition chair for children, multi-color, wheels, armrests, detachable foot support
CHA181	✓	Micturition chair, folding, height adjustable

*Solar systems can also be combined with Luna (U5-1) for wireless recording of pressures and EMG and/or easy ambulatory prolongation of conventional urodynamics!*

# Solar Smart BD, Pole mounted (U4-1)

## Add-ons

### Additional software

Article	Description
NET 600	Network analysis Software for first 2 users
SSP-Bio	Biofeedback software
SSP-Anal	Anorectal manometry software
SSP-3D	3D Vector Volume Plot software
SSP-AP	<p>Additional Parameters</p> <ul style="list-style-type: none"><li>• Initial bladder filling</li><li>• 5 compliance markers instead of 1</li><li>• Detrusor Volume Plot</li><li>• Detrusor/Flow plots Griffiths and W/F-Graph</li><li>• UPP Transmission graph and report</li></ul>
SSP-ST5	<p>Software upgrade from Smart to Silver</p> <ul style="list-style-type: none"><li>• Extra entry fields in database</li><li>• User definable markers (A, B, C, D)</li><li>• Online review</li><li>• Detrusor/Flow plots Schäfer and CHESS</li></ul>
SSP-L2	<p>Software Level 2 (Many Results)</p> <ul style="list-style-type: none"><li>• Additional markers: Transmission in Cystometry and Pressure/Flow, non-inhibited vesical contraction, non-inhibited detrusor contraction, Urethral relaxation, Fatigue, Stoptest begin miction, Stoptest stop miction</li><li>• Search detrusor contractions</li><li>• Prompt for extra miction info</li></ul>
SSP-TC	<p>Templates and Comments</p> <ul style="list-style-type: none"><li>• Templates for design of standard letters</li><li>• Additional and Medical Comments</li></ul>

### Manuals

Article	Description
MAN-120	Solar Manuel d'Utilisation (French)
MAN-046	Solar Benutzerhandbuch (German)
MAN-045	Solar Gebruikershandleiding (Dutch)
MAN-140	HIS/EMR integration Users & Installation manual

# Solar Silver L4, Trolley system (U4-2)

Intelligent urodynamic system for advanced urodynamic and pelvic floor investigations in almost every hospital environment.

All Solar modules, PC, printer and monitor are integrated in a moveable trolley.

Solar Silver L4 is ready to use air-charged or solid state catheters.



## System:

- Trolley:** Solar Silver Trolley with 12 cm wheels and wheel brakes, keyboard shelf and accessory rail at the top of one side of the trolley.
- Interface Module:** Solar Combination Interface Module (CIM) with 4 pressure channels with Lemo-4 connector and EMG channel.  
**Note:** Please order AO-EMG if you would like to measure EMG.
- Pump:** Digital 4 roll Pump & Infused Volume Module
- U2M:** Solar U2M Main Module with 5 ports and infrared receiver.
- Flowsensor:** Digital uroflow sensor with wireless Bluetooth connection and Bluetooth Dongle for PC. Funnel, urine container and height adjustable Flowstand included. The wireless uroflow sensor uses 4 AA batteries.
- Remote control:** Infrared remote control RC-1200 (blue)
- English manuals:** Solar Uro User's manual, Solar Uro/GI Service & Installation manual
- Standard included:** Infrared receiver  
Solar Safety Set, Q (115 V or 230 V)  
Mounting clamps, cables and power cord EU or US

## Software:

Solar software :

- Solar Patient database software
- Query Module: Database filter and Query options
- Stationary Urodynamic investigation software
- 9 Protocols for each test
- Stationary Urodynamic analysis software
- Hardware diagnostic software

Urodynamic investigation and analysis software:

- Uroflowmetry software
- Cystometry software (CMG)
- Pressure/Flow software

# Solar Silver L4, Trolley system (U4-2)

## Add-ons

### Additional packages

Article	Picture	Description
AO-Memscap Silver		<b>Solar Silver Memscap Transducers package</b> Transducer Holder for 4 Memscap transducers and Infusion Pole for Solar Silver (fixed) including 4 hooks, mounting clamps and 1 extra accessory rail.
AO-SGP		<b>Solar Gold Trolley package</b> Package to upgrade Solar Silver Trolley to a Solar Gold Trolley, including PC cable cover, 2 blue side shields, printer shelf, 1 extra accessory rail.
AO-UPP C3	✓	<b>Solar Urethral Pressure Profile (UPP) Trolley package</b> Catheter Puller, including mounting clamp for Solar Trolley. UPP software, Gynecology software (combination study) and additional UPP parameters (Dr. Eberhard analysis and Transmission Profile Graph).
AO-UPP C2	✓	<b>Solar Urethral Pressure Profile (UPP) Puller stand package</b> Catheter Puller and Puller stand, height adjustable with clamp. UPP software, Gynecology software (combination study) and additional UPP parameters (Dr. Eberhard analysis and Transmission Profile Graph).
AO-UPP W3	✓	<b>Solar wireless Urethral Pressure Profile (UPP) Trolley package</b> Wireless Catheter Puller, including mounting clamp for Solar Trolley. UPP software, Gynecology software (combination study) and additional UPP parameters (Dr. Eberhard analysis and Transmission Profile Graph).
AO-UPP W2	✓	<b>Solar wireless Urethral Pressure Profile (UPP) Puller stand package</b> Wireless Catheter Puller and Puller stand, height adjustable with clamp. UPP software, Gynecology software and additional UPP parameters (Dr. Eberhard analysis and Transmission Profile Graph).
AO-UPP Manual Pull		<b>Solar Urethral Pressure Profile (UPP) manual pull package</b> UPP software, Gynecology software (combination study) and additional UPP parameters (Dr. Eberhard analysis and Transmission Profile Graph).
AO-Pura Perfusion Set		<b>Pressure Cuff and Flow reducer set for Urethra perfusion</b> Pressure cuff for UPP perfusion with UPP flow reducer set.
AO-EMG		<b>Solar EMG package</b> Solar software for EMG 1 channel. Guarded EMG cable with DIN-5 plug and 3 leads (180 cm).
AO-EMG HS		<b>High speed EMG for CIM, 10 kHz.</b> (Order AO EMG too.) Software to measure and display High speed/frequency EMG signals.
AO-Neuro	✓	<b>Neuro Module</b> Software for EMG 1 channel and Neuro software for free running EMG, pudendal nerve stimulation (PNS) and motor nerve conduction. High speed/frequency EMG and stimulation module, 1 EMG channel, guarded EMG cable with DIN-5 plug and 3 leads (180 cm), 1 stimulation channel, connection cable and mounting clamp, Solar Neuro user's manual. <b>Note:</b> The following items are required for PNS: C040, G34-831 and EMGC-1DIN-SUR-150. Please order them from the Catheters and Accessories catalogue.
AO-EMG 2C		<b>EMG package with classic EMG cable (EMGC-D5-TP, EMGC-TP-SUR)</b> Software for EMG 1 channel Guarded EMG cable for 3 electrodes with DIN 42802 and DIN-5 connector, 180 cm Guarded EMG cable with press stud and DIN 42802, 30 cm, set of 3

# Solar Silver L4, Trolley system (U4-2)

## Add-ons

### Additional packages

Article	Picture	Description
AO-Luna Belt		Water transducer belt for Luna
AO-Neuro 2EMG		<b>2nd EMG Channel for Neuro Module</b> Neuro software 2nd EMG channel for Free running EMG. Guarded EMG cable with DIN-5 plug and 3 leads (180 cm).
AO-BPM Medlab		<b>Blood Pressure / SpO2 interface software for (Medlab) Vitro</b> BP and SpO2 interface software (SSP-BMP Medlab) for Medlab Vitro. Blood Pressure Monitor User's and Installation manual. <b>Note:</b> monitor has to be purchased locally.
AO-BPM Nonin		<b>Blood Pressure / SpO2 interface software for (Nonin) Avant 2120</b> BP and SpO2 interface software (SSP-BMP Nonin) for Nonin Avant 2120. Blood Pressure Monitor User's and Installation manual. <b>Note:</b> monitor has to be purchased locally.

### Additional hardware

Article	Picture	Description
CIM-A-C		Addition for CIM: conductance for automated leak point pressures detection, Lemo-3
CIM-A-L14		Addition for CIM M4E: 5 pressures in one connector, Lemo-14
CIM-A-M		Addition for CIM M4E: additional pressure, Lemo-4
C/Holder-Mem	✓	Transducer holder for 4 Memscap transducers
F3BT-PS	✓	Power supply for wireless Flow sensor, medical grade, with 2 m cable and EU, US, UK and AU mains plug. Alternative for batteries.
SDC-4	✓	MMS bus cable, 4 meter for wired setup of the flowsensor
Battery-AA-ALK		Battery, alkaline, AA (set of 25)
Flowchair		Micturition chair, height adjustable, plastic frame with lift-up armrests
Flowchair-P		Micturition chair for children, multi-color, wheels, armrests, detachable foot support
CHA181	✓	Micturition chair, folding, height adjustable



# Solar Silver L4, Trolley system (U4-2)

## Add-ons

### Additional software

Article	Description
NET 600	Network analysis Software for first 2 users
SSP-Bio	Biofeedback software
SSP-Anal	Anorectal manometry software
SSP-3D	3D Vector Volume Plot software
SSP-AP	Additional Parameters <ul style="list-style-type: none"><li>• Initial bladder filling</li><li>• 5 compliance markers instead of 1</li><li>• Detrusor Volume Plot</li><li>• Detrusor/Flow plots Griffiths and W/F-Graph</li><li>• UPP Transmission graph and report</li></ul>
SSP-L2	Software Level 2 (Many Results) <ul style="list-style-type: none"><li>• Additional markers: Transmission in Cystometry and Pressure/Flow, non-inhibited vesical contraction, non-inhibited detrusor contraction, Urethral relaxation, Fatigue, Stoptest begin miction, Stoptest stop miction</li><li>• Search detrusor contractions</li><li>• Prompt for extra miction info</li></ul>
HEM-NST-SW	Neuro software: Sensory Threshold (not available for USA)
SSP-TC	Templates and Comments <ul style="list-style-type: none"><li>• Templates for design of standard letters</li><li>• Additional and Medical Comments</li></ul>

### Manuals

Article	Description
MAN-120	Solar Manuel d'Utilisation (French)
MAN-046	Solar Benutzerhandbuch (German)
MAN-045	Solar Gebruikershandleiding (Dutch)
MAN-140	HIS/EMR integration Users & Installation manual

*Solar systems can also be combined with Luna (U5-1) for wireless recording of pressures and EMG and/or easy ambulatory prolongation of conventional urodynamics!*

# Solar Silver BD, Trolley system (U4-3)

Intelligent urodynamic system for advanced urodynamic and pelvic floor investigations in almost every hospital environment.

All Solar modules, PC, printer and monitor are integrated in a moveable trolley.

Solar Silver BD is ready to use water perfused catheters and pressure transducers with Argon (formerly Becton-Dickinson) connectors.



## System:

- Trolley:** Solar Silver Trolley with 12 cm wheels and wheel brakes, keyboard shelf and accessory rail at the top and the bottom of one side of the trolley. and infusion pole with 4 hooks.
- Interface Module:** Solar Combination Interface Module (CIM) with 4 pressure channels with Argon connector, 1 EMG channel and Water transducer holder.  
**Note:** Please order AO-EMG if you would like to measure EMG.
- Pump:** Digital 4 roll Pump & Infused Volume Module
- U2M:** Solar U2M Main Module with 5 ports
- Flowsensor:** Digital uroflow sensor with wireless Bluetooth connection and Bluetooth Dongle for PC. Funnel, urine container and height adjustable Flowstand included.  
The wireless uroflow sensor uses 4 AA batteries.
- Remote control:** Infrared remote control RC-1200 (blue)
- English manuals:** Solar Uro User's manual, Solar Uro/GI Service & Installation manual
- Standard included:** Infrared receiver  
Solar Safety Set, Q (115 V or 230 V)  
Mounting clamps, cables and power cord EU or US

## Software:

Solar software:

- Solar Patient database software
- Query Module: Database filter and Query options
- Stationary Urodynamic investigation software
- 9 Protocols for each test
- Stationary Urodynamic analysis software
- Hardware diagnostic software

Urodynamic investigation and analysis software:

- Uroflowmetry software
- Cystometry software (CMG)
- Pressure/Flow software

# Solar Silver BD, Trolley system (U4-3)

## Add-ons

### Additional packages

Article	Picture	Description
AO-SGP		<b>Solar Gold Trolley package</b> Package to upgrade Solar Silver Trolley to a Solar Gold Trolley, including PC cable cover, 2 blue side shields, printer shelf, 1 extra accessory rail.
AO-UPP C3	✓	<b>Solar Urethral Pressure Profile (UPP) Trolley package</b> Catheter Puller, including mounting clamp for Solar Trolley. UPP software, Gynecology software (combination study) and additional UPP parameters (Dr. Eberhard analysis and Transmission Profile Graph).
AO-UPP C2	✓	<b>Solar Urethral Pressure Profile (UPP) Puller stand package</b> Catheter Puller and Puller stand, height adjustable with clamp. UPP software, Gynecology software (combination study) and additional UPP parameters (Dr. Eberhard analysis and Transmission Profile Graph).
AO-UPP W3	✓	<b>Solar wireless Urethral Pressure Profile (UPP) Trolley package</b> Wireless Catheter Puller, including mounting clamp for Solar Trolley. UPP software, Gynecology software (combination study) and additional UPP parameters (Dr. Eberhard analysis and Transmission Profile Graph).
AO-UPP W2	✓	<b>Solar wireless Urethral Pressure Profile (UPP) Puller standpackage</b> Wireless Catheter Puller and Puller stand, height adjustable with clamp. UPP software, Gynecology software and additional UPP parameters (Dr. Eberhard analysis and Transmission Profile Graph).
AO-UPP Manual Pull		<b>Solar Urethral Pressure Profile (UPP) manual pull package</b> UPP software, Gynecology software (combination study) and additional UPP parameters (Dr. Eberhard analysis and Transmission Profile Graph).
AO-Pura Perfusion Set		<b>Pressure Cuff and Flow reducer set for Urethra perfusion</b> Pressure cuff for UPP perfusion with UPP flow reducer set.
AO-EMG		<b>Solar EMG package</b> Solar software for EMG 1 channel. Guarded EMG cable with DIN-5 plug and 3 leads (180 cm).
AO-EMG HS		<b>High speed EMG for CIM, 10 kHz.</b> Software to measure and display High speed/frequency EMG signals. <b>Note:</b> Please order AO-EMG too.
AO-Neuro	✓	<b>Neuro Module</b> Software for EMG 1 channel and Neuro software for free running EMG, pudendal nerve stimulation (PNS) and motor nerve conduction. High speed/frequency EMG and stimulation module, 1 EMG channel, guarded EMG cable with DIN-5 plug and 3 leads (180 cm), 1 stimulation channel, connection cable and mounting clamp, Solar Neuro user's manual. <b>Note:</b> The following items are required for PNS: C040, G34-831 and EMGC-1DIN-SUR-150. Please order them from the Catheters and Accessories catalogue.
AO-Neuro 2EMG		<b>2nd EMG Channel for Neuro Module</b> Neuro software 2nd EMG channel for Free running EMG. Guarded EMG cable with DIN-5 plug and 3 leads (180 cm).

# Solar Silver BD, Trolley system (U4-3)

## Add-ons

### Additional packages

Article	Picture	Description
AO-EMG 2C		EMG package with classic EMG cable (EMGC-D5-TP, EMGC-TP-SUR) Software for EMG 1 channel Guarded EMG cable for 3 electrodes with DIN 42802 and DIN-5 connector, 180 cm Guarded EMG cable with press stud and DIN 42802, 30 cm, set of 3
AO-Luna Belt		Water transducer belt for Luna
AO-BPM Medlab		Blood Pressure / SpO2 interface software for (Medlab) Vitro BP and SpO2 interface software (SSP-BMP Medlab) for Medlab Vitro. Blood Pressure Monitor User's and Installation manual. <b>Note:</b> monitor has to be purchased locally.
AO-BPM Nonin		Blood Pressure / SpO2 interface software for (Nonin) Avant 2120 BP and SpO2 interface software (SSP-BMP Nonin) for Nonin Avant 2120. Blood Pressure Monitor User's and Installation manual. <b>Note:</b> monitor has to be purchased locally.

### Additional hardware

Article	Picture	Description
CIM-A-C		Addition for CIM: conductance for automated leak point pressures detection, Lemo-3
F3BT-PS	✓	Power supply for wireless Flow sensor, medical grade, with 2 m cable and EU, US, UK and AU mains plug. Alternative for batteries.
SDC-4	✓	MMS bus cable, 4 meter for wired setup of the flowsensor
Battery-AA-ALK		Battery, alkaline, AA (set of 25)
Flowchair		Micturition chair, height adjustable, plastic frame with lift-up armrests
Flowchair-P		Flowstand, height adjustable (no funnel, no container)
CHA181	✓	Micturition chair, folding, height adjustable

*Solar systems can also be combined with Luna (U5-1) for wireless recording of pressures and EMG and/or easy ambulatory prolongation of conventional urodynamics!*

### Additional software

Article	Description
NET 600	Network analysis Software for first 2 users
SSP-Bio	Biofeedback software
SSP-Anal	Anorectal manometry software
SSP-3D	3D Vector Volume Plot software
SSP-AP	Additional Parameters <ul style="list-style-type: none"><li>• Initial bladder filling</li><li>• 5 compliance markers instead of 1</li><li>• Detrusor Volume Plot</li><li>• Detrusor/Flow plots Griffiths and W/F-Graph</li><li>• UPP Transmission graph and report</li></ul>
SSP-L2	Software Level 2 (Many Results) <ul style="list-style-type: none"><li>• Additional markers: Transmission in Cystometry and Pressure/Flow, non-inhibited vesical contraction, non-inhibited detrusor contraction, Urethral relaxation, Fatigue, Stoptest begin miction, Stoptest stop miction</li><li>• Search detrusor contractions</li><li>• Prompt for extra miction info</li></ul>
HEM-NST-SW	Neuro software: Sensory Threshold (not available for USA) <ul style="list-style-type: none"><li>• Templates for design of standard letters</li></ul>
SSP-TC	Templates and Comments <ul style="list-style-type: none"><li>• Templates for design of standard letters</li><li>• Additional and Medical Comments</li></ul>

### Manuals

Article	Description
MAN-120	Solar Manuel d'Utilisation (French)
MAN-046	Solar Benutzerhandbuch (German)
MAN-045	Solar Gebruikershandleiding (Dutch)
MAN-140	HIS/EMR integration Users & Installation manual

# Solar Gold L4, Trolley system (U4-4)

State-of-the art urodynamic system with a large range of features and functions for urodynamic and pelvic floor investigations as well as research.

Solar Gold is mainly used in hospitals with a large urodynamic workload.

All Solar modules, PC, printer and monitor are integrated in a moveable trolley.

Solar Gold L4 is ready to use air-charged or solid state catheters.



## System:

- Trolley:** Solar Gold Trolley with 12 cm wheels and wheel brakes, keyboard shelf, PC cable cover, blue side shields, printer shelf, monitor arm for TFT flat screen, accessory rail at the top of both sides of the trolley.
- Interface Module:** Solar Combination Interface Module (CIM) with 4 pressure channels with Lemo-4 connector and EMG channel.  
**Note:** Please order AO-EMG if you would like to measure EMG.
- Pump:** Digital 8 roll Pump & Infused Volume Module
- U2M:** Solar U2M Main Module with 5 ports
- Flowsensor:** Digital uroflow sensor with wireless Bluetooth connection and Bluetooth Dongle for PC. Funnel, urine container and height adjustable Flowstand included.  
The wireless uroflow sensor uses 4 AA batteries.
- Remote control:** Infrared remote control RC-1200 (blue)
- English manuals:** Solar Uro User's manual, Solar Uro/GI Service & Installation manual
- Standard included:** Infrared receiver  
Solar Safety Set, Q (115 V or 230 V)  
Mounting clamps, cables and power cord EU or US

## Software:

Solar software:

- Solar Patient database software
- Query Module: Database filter and Query options
- Stationary Urodynamic investigation software
- 9 Protocols for each test
- Stationary Urodynamic analysis software
- Hardware diagnostic software

Urodynamic investigation and analysis software:

- Uroflowmetry software
- Cystometry software (CMG)
- Pressure/Flow software

# Solar Gold L4, Trolley system (U4-4)

## Add-ons

### Additional packages

Article	Picture	Description
AO-Memscap Gold		<b>Solar Gold Memscap Transducers package</b> Transducer Holder for 4 Memscap transducers and Infusion Pole for Solar Gold (adjustable) including 4 hooks, mounting clamps and 1 extra accessory rail.
AO-UPP C3	✓	<b>Solar Urethral Pressure Profile (UPP) Trolley package</b> Catheter Puller, including mounting clamp for Solar Trolley. UPP software, Gynecology software (combination study) and additional UPP parameters (Dr. Eberhard analysis and Transmission Profile Graph).
AO-UPP C2	✓	<b>Solar Urethral Pressure Profile (UPP) Puller stand package</b> Catheter Puller and Puller stand, height adjustable with clamp. UPP software, Gynecology software (combination study) and additional UPP parameters (Dr. Eberhard analysis and Transmission Profile Graph).
AO-UPP W3	✓	<b>Solar wireless Urethral Pressure Profile (UPP) Trolley package</b> Wireless Catheter Puller, including mounting clamp for Solar Trolley. UPP software, Gynecology software (combination study) and additional UPP parameters (Dr. Eberhard analysis and Transmission Profile Graph).
AO-UPP W2	✓	<b>Solar wireless Urethral Pressure Profile (UPP) Puller stand package</b> Wireless Catheter Puller and Puller stand, height adjustable with clamp. UPP software, Gynecology software and additional UPP parameters (Dr. Eberhard analysis and Transmission Profile Graph).
AO-UPP Manual Pull		<b>Solar Urethral Pressure Profile (UPP) manual pull package</b> UPP software, Gynecology software (combination study) and additional UPP parameters (Dr. Eberhard analysis and Transmission Profile Graph).
AO-Pura Perfusion Set		<b>Pressure Cuff and Flow reducer set for Urethra perfusion</b> Pressure cuff for UPP perfusion with UPP flow reducer set.
AO-EMG		<b>Solar EMG package</b> Solar software for EMG 1 channel. Guarded EMG cable with DIN-5 plug and 3 leads (180 cm).
AO-EMG HS		<b>High speed EMG for CIM, 10 kHz.</b> Software to measure and display High speed/frequency EMG signals. <b>Note:</b> Please order AO-EMG too.
AO-Neuro	✓	<b>Neuro Module</b> Software for EMG 1 channel and Neuro software for free running EMG, pudendal nerve stimulation (PNS) and motor nerve conduction. High speed/frequency EMG and stimulation module, 1 EMG channel, guarded EMG cable with DIN-5 plug and 3 leads (180 cm), 1 stimulation channel, connection cable and mounting clamp, Solar Neuro user's manual. <b>Note:</b> The following items are required for PNS: C040, G34-831 and EMGC-1DIN-SUR-150. Please order them from the Catheters and Accessories catalogue.
AO-Neuro 2EMG		<b>2nd EMG Channel for Neuro Module</b> Neuro software 2nd EMG channel for Free running EMG. Guarded EMG cable with DIN-5 plug and 3 leads (180 cm).

### Additional packages

Article	Picture	Description
AO-EMG 2C		<b>EMG package with classic EMG cable (EMGC-D5-TP, EMGC-TP-SUR)</b> Software for EMG 1 channel Guarded EMG cable for 3 electrodes with DIN 42802 and DIN-5 connector, 180 cm Guarded EMG cable with press stud and DIN 42802, 30 cm, set of 3
AO-Luna Belt		<b>Water transducer belt for Luna</b>
AO-BPM Medlab		<b>Blood Pressure / SpO2 interface software for (Medlab) Vitro</b> BP and SpO2 interface software (SSP-BMP Medlab) for Medlab Vitro. Blood Pressure Monitor User's and Installation manual. <b>Note:</b> monitor has to be purchased locally.
AO-BPM Nonin		<b>Blood Pressure / SpO2 interface software for (Nonin) Avant 2120</b> BP and SpO2 interface software (SSP-BMP Nonin) for Nonin Avant 2120. Blood Pressure Monitor User's and Installation manual. <b>Note:</b> monitor has to be purchased locally.

### Additional hardware

Article	Picture	Description
CIM-A-C		Addition for CIM: conductance for automated leak point pressures detection, Lemo-3
CIM-A-L14		Addition for CIM M4E: 5 pressures in one connector, Lemo-14
CIM-A-M		Addition for CIM M4E: additional pressure, Lemo-4
C/Holder-Mem	✓	Transducer holder for 4 Memscap transducers
F3BT-PS	✓	Power supply for wireless flowsensor, medical grade, with 2 m cable and EU, US, UK and AU mains plug. Alternative for batteries.
SDC-4	✓	MMS bus cable, 4 meter for wired setup of the flowsensor
Battery-AA-ALK		Battery, alkaline, AA (set of 25)
Flowchair		Micturition chair, height adjustable, plastic frame with lift-up armrests
Flowchair-P		Micturition chair for children, multi-color, wheels, armrests, detachable foot support
CHA181	✓	Micturition chair, folding, height adjustable



# Solar Gold L4, Trolley system (U4-4)

## Add-ons

### Additional software

Article	Description
SSP-Bio	Biofeedback software
SSP-Anal	Anorectal manometry software
SSP-3D	3D Vector Volume Plot software
SSP-AP	Additional Parameters <ul style="list-style-type: none"><li>• Initial bladder filling</li><li>• 5 compliance markers instead of 1</li><li>• Detrusor Volume Plot</li><li>• Detrusor/Flow plots Griffiths and W/F-Graph</li><li>• UPP Transmission graph and report</li></ul>
SSP-L2	Software Level 2 (Many Results) <ul style="list-style-type: none"><li>• Additional markers: Transmission in Cystometry and Pressure/Flow, non-inhibited vesical contraction, non-inhibited detrusor contraction, Urethral relaxation, Fatigue, Stoptest begin miction, Stoptest stop miction</li><li>• Search detrusor contractions</li><li>• Prompt for extra miction info</li></ul>
HEM-NST-SW	Neuro software: Sensory Threshold (not available for USA)
SSP-TC	Templates and Comments <ul style="list-style-type: none"><li>• Templates for design of standard letters</li><li>• Additional and Medical Comments</li></ul>
NET 600	Network analysis Software for first 2 users

### Manuals

Article	Description
MAN-120	Solar Manuel d'Utilisation (French)
MAN-046	Solar Benutzerhandbuch (German)
MAN-045	Solar Gebruikershandleiding (Dutch)
MAN-140	HIS/EMR integration Users & Installation manual

*Solar systems can also be combined with Luna (U5-1) for wireless recording of pressures and EMG and/or easy ambulatory prolongation of conventional urodynamics!*

# Solar Gold BD, Trolley system (U4-5)

State-of-the art urodynamic system with a large range of features and functions for urodynamic and pelvic floor investigations as well as research.

Solar Gold is mainly used in hospitals with a large urodynamic workload.

All Solar modules, PC, printer and monitor are integrated in a moveable trolley.

Solar Gold BD is ready to use water perfused catheters and pressure transducers with Argon (formerly B-D) connectors.



## System:

- Trolley:** Solar Gold Trolley with 12 cm wheels and wheel brakes, keyboard shelf, PC cable cover, blue side shields, printer shelf, monitor arm for TFT flat screen, accessory rail on both sides of the trolley, adjustable infusion pole and accessory rail at the bottom of the trolley for mounting of the infusion pole.
- Interface Module:** Solar Combination Interface Module (CIM) with 4 pressure channels with Argon connector, 1 EMG channel and Water transducer holder.  
**Note:** Please order AO-EMG if you would like to measure EMG.
- Pump:** Digital 8 roll Pump & Infused Volume Module
- U2M:** Solar U2M Main Module with 5 ports
- Flowsensor:** Digital uroflow sensor with wireless Bluetooth connection and Bluetooth Dongle for PC. Funnel, urine container and height adjustable Flowstand included.  
The wireless uroflow sensor uses 4 AA batteries.
- Remote control:** Infrared remote control RC-1200 (blue)
- English manuals:** Solar Uro User's manual, Solar Uro/GI Service & Installation manual
- Standard included:** Infrared receiver  
Solar Safety Set, Q (115 V or 230 V)  
Mounting clamps, cables and power cord EU or US

## Software:

Solar Patient database software:

- Query Module: Database filter and Query options
- Stationary Urodynamic investigation software
- 9 Protocols for each test
- Stationary Urodynamic analysis software
- Hardware diagnostic software

Urodynamic investigation and analysis software:

- Uroflowmetry software
- Cystometry software (CMG)
- Pressure/Flow software

# Solar Gold BD, Trolley system (U4-5)

## Add-ons

### Additional packages

Article	Picture	Description
AO-UPP C3	✓	<b>Solar Urethral Pressure Profile (UPP) Trolley package</b> Catheter Puller, including mounting clamp for Solar Trolley. UPP software, Gynecology software (combination study) and additional UPP parameters (Dr. Eberhard analysis and Transmission Profile Graph).
AO-UPP C2	✓	<b>Solar Urethral Pressure Profile (UPP) Puller stand package</b> Catheter Puller and Puller stand, height adjustable with clamp. UPP software, Gynecology software (combination study) and additional UPP parameters (Dr. Eberhard analysis and Transmission Profile Graph).
AO-UPP W3	✓	<b>Solar wireless Urethral Pressure Profile (UPP) Trolley package</b> Wireless Catheter Puller, including mounting clamp for Solar Trolley. UPP software, Gynecology software (combination study) and additional UPP parameters (Dr. Eberhard analysis and Transmission Profile Graph).
AO-UPP W2	✓	<b>Solar wireless Urethral Pressure Profile (UPP) Puller stand package</b> Wireless Catheter Puller and Puller stand, height adjustable with clamp. UPP software, Gynecology software and additional UPP parameters (Dr. Eberhard analysis and Transmission Profile Graph).
AO-UPP Manual Pull		<b>Solar Urethral Pressure Profile (UPP) manual pull package</b> UPP software, Gynecology software (combination study) and additional UPP parameters (Dr. Eberhard analysis and Transmission Profile Graph).
AO-Pura Perfusion Set		<b>Pressure Cuff and Flow reducer set for Urethra perfusion</b> Pressure cuff for UPP perfusion with UPP flow reducer set.
AO-EMG		<b>Solar EMG package</b> Solar software for EMG 1 channel. Guarded EMG cable with DIN-5 plug and 3 leads (180 cm).
AO-EMG HS		<b>High speed EMG for CIM, 10 kHz.</b> Software to measure and display High speed/frequency EMG signals. <b>Note:</b> Please order AO-EMG too.
AO-Neuro	✓	<b>Neuro Module</b> Software for EMG 1 channel and Neuro software for free running EMG, pudendal nerve stimulation (PNS) and motor nerve conduction. High speed/frequency EMG and stimulation module, 1 EMG channel, guarded EMG cable with DIN-5 plug and 3 leads (180 cm), 1 stimulation channel, connection cable and mounting clamp, Solar Neuro user's manual. <b>Note:</b> The following items are required for PNS: C040, G34-831 and EMGC-1DIN-SUR-150. Please order them from the Catheters and Accessories catalogue.
AO-Neuro 2EMG		<b>2nd EMG Channel for Neuro Module</b> Neuro software 2nd EMG channel for Free running EMG. Guarded EMG cable with DIN-5 plug and 3 leads (180 cm).

# Solar Gold BD, Trolley system (U4-5)

## Add-ons

### Additional packages

Article	Picture	Description
AO-EMG 2C		EMG package with classic EMG cable (EMGC-D5-TP, EMGC-TP-SUR) Software for EMG 1 channel Guarded EMG cable for 3 electrodes with DIN 42802 and DIN-5 connector, 180 cm Guarded EMG cable with press stud and DIN 42802, 30 cm, set of 3
AO-Luna Belt		Water transducer belt for Luna
AO-BPM Medlab		Blood Pressure / SpO2 interface software for (Medlab) Vitro BP and SpO2 interface software (SSP-BMP Medlab) for Medlab Vitro. Blood Pressure Monitor User's and Installation manual. <b>Note:</b> monitor has to be purchased locally.
AO-BPM Nonin		Blood Pressure / SpO2 interface software for (Nonin) Avant 2120 BP and SpO2 interface software (SSP-BMP Nonin) for Nonin Avant 2120. Blood Pressure Monitor User's and Installation manual. <b>Note:</b> monitor has to be purchased locally.

### Additional hardware

Article	Picture	Description
CIM-A-C		Addition for CIM: conductance for automated leak point pressures detection, Lemo-3
F3BT-PS	✓	Power supply for wireless Flow sensor, medical grade, with 2 m cable and EU, US, UK and AU mains plug. Alternative for batteries.
SDC-4	✓	MMS bus cable, 4 meter for wired setup of the flowsensor
Battery-AA-ALK		Battery, alkaline, AA (set of 25)
Flowchair		Micturition chair, height adjustable, plastic frame with lift-up armrests
Flowchair-P		Micturition chair for children, multi-color, wheels, armrests, detachable foot support
CHA181	✓	Micturition chair, folding, height adjustable

*Solar systems can also be combined with Luna (U5-1) for wireless recording of pressures and EMG and/or easy ambulatory prolongation of conventional urodynamics!*

### Additional software

Article	Description
SSP-Bio	Biofeedback software
SSP-Anal	Anorectal manometry software
SSP-3D	3D Vector Volume Plot software
SSP-AP	Additional Parameters <ul style="list-style-type: none"><li>• Initial bladder filling</li><li>• 5 compliance markers instead of 1</li><li>• Detrusor Volume Plot</li><li>• Detrusor/Flow plots Griffiths and W/F-Graph</li><li>• UPP Transmission graph and report</li></ul>
SSP-L2	Software Level 2 (Many Results) <ul style="list-style-type: none"><li>• Additional markers: Transmission in Cystometry and Pressure/Flow, non-inhibited vesical contraction, non-inhibited detrusor contraction, Urethral relaxation, Fatigue, Stoptest begin miction, Stoptest stop miction</li><li>• Search detrusor contractions</li><li>• Prompt for extra miction info</li></ul>
HEM-NST-SW	Neuro software: Sensory Threshold (not available for USA) <ul style="list-style-type: none"><li>• Templates for design of standard letters</li><li>• Additional and Medical Comments</li></ul>
NET 600	Network analysis Software for first 2 users
SSP-TC	Templates and Comments <ul style="list-style-type: none"><li>• Templates for design of standard letters</li><li>• Additional and Medical Comments</li></ul>

### Manuals

Article	Description
MAN-120	Solar Manuel d'Utilisation (French)
MAN-046	Solar Benutzerhandbuch (German)
MAN-045	Solar Gebruikershandleiding (Dutch)
MAN-140	HIS/EMR integration Users & Installation manual

# Nexam Pro WPU, Trolley System (U8-3)

Professional urodynamic system with a broad range of features and functions for urodynamic and pelvic floor investigations as well as research.

Nexam Pro is mainly used in hospitals and clinics with a large urodynamic workload.

All modules, PC, printer and monitor are integrated in a moveable trolley.

Wireless transmission of Pressure and EMG data (WPU).

The Nexam Pro WPU is ready to use air-charged or solid state catheters.



## System:

- Trolley:** Nexam trolley with height adjustable monitor arm for TFT flat screen (up to 26"), keyboard and mouse shelf, storage drawer, U-shaped accessory rail, side shields, 4 wheels with brakes.
- Interface Module:** Wireless Patient Unit (WPU) with 4 pressure channels with Lemo-4 connector and 1 EMG connector.  
**Note:** Please order AO-EMG WPU S if you would like to use the EMG connector and measure EMG.
- Pump:** 10 roll Pump (Nexam Pump Unit)
- U2M:** U2M Main Module with 5 ports
- Flowsensor:** Digital uroflow sensor with wireless Bluetooth connection and Bluetooth Dongle for PC. Funnel, urine container and height adjustable Flowstand included.  
The wireless uroflow sensor uses 4 AA batteries.
- Remote control:** Bluetooth® remote control RC-1600
- English manuals:** Nexam User's manual, Nexam Service & Installation manual.
- Standard included:** Separating Transformer, Q (115 V or 230 V)

## Software:

Solar Software:

- Patient database software
- Query Module: Database filter and Query options
- Stationary Urodynamic investigation software
- 9 Protocols for each test
- Stationary Urodynamic analysis software
- Hardware diagnostic software

Urodynamic investigation and analysis software:

- Uroflowmetry software
- Cystometry software (CMG)
- Pressure/Flow software

# Nexam Pro WPU, Trolley System (U8-3)

## Add-ons

### Additional packages

Article	Picture	Description
AO-UPP C3	✓	<b>Solar Urethral Pressure Profile (UPP) Trolley package</b> Catheter Puller, including mounting clamp for Solar Trolley. UPP software, Gynecology software (combination study) and additional UPP parameters (Dr. Eberhard analysis and Transmission Profile Graph).
AO-UPP C2	✓	<b>Solar Urethral Pressure Profile (UPP) Puller stand package</b> Catheter Puller and Puller stand, height adjustable with clamp. UPP software, Gynecology software (combination study) and additional UPP parameters (Dr. Eberhard analysis and Transmission Profile Graph).
AO-UPP W3	✓	<b>Solar wireless Urethral Pressure Profile (UPP) Trolley package</b> Wireless Catheter Puller, including mounting clamp for Solar Trolley. UPP software, Gynecology software (combination study) and additional UPP parameters (Dr. Eberhard analysis and Transmission Profile Graph).
AO-UPP W2	✓	<b>Solar wireless Urethral Pressure Profile (UPP) Puller stand package</b> Wireless Catheter Puller and Puller stand, height adjustable with clamp. UPP software, Gynecology software and additional UPP parameters (Dr. Eberhard analysis and Transmission Profile Graph).
AO-UPP Manual Pull		<b>Solar Urethral Pressure Profile (UPP) manual pull package</b> UPP software, Gynecology software (combination study) and additional UPP parameters (Dr. Eberhard analysis and Transmission Profile Graph).
AO-Pura Perfusion Set		<b>Pressure Cuff and Flow reducer set for Urethra perfusion</b> Pressure cuff for UPP perfusion with UPP flow reducer set.
AO-EMG WPU S		<b>WPU EMG package, for EMG with surface electrodes</b> Software for EMG 1 channel. Guarded EMG cable with 3x DIN 42802 and 3x press stud, (60 cm). <b>Note:</b> our disposable EMG leads can be connected directly to the WPU. Therefore, only EMG software is required (order SSP-EMG-1CH).
AO-Neuro	✓	<b>Neuro Module</b> Software for EMG 1 channel and Neuro software for free running EMG, pudendal nerve stimulation (PNS) and motor nerve conduction. High speed/frequency EMG and stimulation module, 1 EMG channel, guarded EMG cable with DIN-5 plug and 3 leads (180 cm), 1 stimulation channel, connection cable and mounting clamp, Solar Neuro user's manual. <b>Note:</b> The following items are required for PNS: C040, G34-831 and EMGC-1DIN-SUR-150. Please order them from the Catheters and Accessories catalogue.
AO-Neuro 2EMG		<b>2nd EMG Channel for Neuro Module</b> Neuro software 2nd EMG channel for Free running EMG. Guarded EMG cable with DIN-5 plug and 3 leads (180 cm).
AO-EMG 2C		<b>EMG package with classic EMG cable (EMGC-D5-TP, EMGC-TP-SUR)</b> Software for EMG 1 channel Guarded EMG cable for 3 electrodes with DIN 42802 and DIN-5 connector, 180 cm Guarded EMG cable with press stud and DIN 42802, 30 cm, set of 3

# Nexam Pro WPU, Trolley System (U8-3)

## Add-ons

### Additional packages

Article	Picture	Description
AO-HRAM UD H2O		High Resolution Anorectal Manometry (HRAM) H2O package for Nexam Anorectal Manometry and HRAM / Clouse Contour Plot Software. Manometric Perfusion Pump (MPP Plus), Multi Pressure Interface (MPI) for 12 channels. 10 Argon pressure transducers, 8 flow resistors (0.6 ml/min), 10 water filters and tubes. Manuals (MAN-157 and MAN-161).
AO-HRAM UD SS		High Resolution Anorectal Manometry (HRAM) Solid State package for Nexam Anorectal Manometry and HRAM / Clouse Contour Plot Software. Combination Interface Module (CIM-AUX HRIM) for High Resolution Manometry. Rail clamp and connection cable.
AO-BPM Medlab		Blood Pressure and SpO2 interface software for (Medlab) Vitro, including manual
AO-BPM Nonin		Blood Pressure and SpO2 interface software for (Nonin) Avant 2120, including manual

### Additional hardware

Article	Picture	Description
F3BT-PS	✓	Power supply for wireless Flow sensor, medical grade, with 2 m cable and EU, US, UK and AU mains plug. Alternative for batteries.
SDC-4	✓	MMS bus cable, 4 meter for wired setup of the flowsensor
Battery-AA-ALK		Battery, alkaline, AA (set of 25)
C/Holder-Mem		Transducer holder for 4 Memscap transducers
CIM-A-C		Addition for CIM: conductance for automated leak point pressures detection, Lemo-3
CIM-A-L14		Addition for CIM M4E: 5 pressures in one connector, Lemo-14
CIM-A-M		Addition for CIM M4E: additional pressure, Lemo-4
Flowchair		Micturition chair, height adjustable, plastic frame with lift-up armrests
Flowchair-P		Micturition chair for children, multi-color, wheels, armrests, detachable foot support
CHA181	✓	Micturition chair, folding, height adjustable

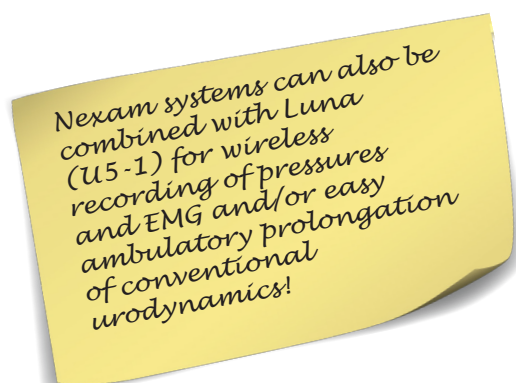


### Additional software

Article	Description
SSP-Bio	Biofeedback software
SSP-Anal	Anorectal manometry software
SSP-3D	3D Vector Volume Plot software
SSP-AP	<p>Additional Parameters</p> <ul style="list-style-type: none"><li>• Initial bladder filling</li><li>• 5 compliance markers instead of 1</li><li>• Detrusor Volume Plot</li><li>• Detrusor/Flow plots Griffiths and W/F-Graph</li><li>• UPP Transmission graph and report</li></ul>
SSP-L2	<p>Software Level 2 (Many Results)</p> <ul style="list-style-type: none"><li>• Additional markers: Transmission in Cystometry and Pressure/Flow, non-inhibited vesical contraction, non-inhibited detrusor contraction, Urethral relaxation, Fatigue, Stoptest begin miction, Stoptest stop miction</li><li>• Search detrusor contractions</li><li>• Prompt for extra miction info</li></ul>
NET 600	Network analysis Software for first 2 users
HEM-NST-SW	Neuro software: Sensory Threshold (not available for USA)
SSP-TC	<p>Templates and Comments</p> <ul style="list-style-type: none"><li>• Templates for design of standard letters</li><li>• Additional and Medical Comments</li></ul>

### Manuals

Article	Description
MAN-140	HIS/EMR integration Users & Installation manual
MAN-147	Nexam Benutzerhandbuch (German)
MAN-146	Nexam Gebruikershandleiding (Dutch)



# Nexam Pro CIM, trolley system (U8-4)

Professional urodynamic system with a broad range of features and functions for urodynamic and pelvic floor investigations as well as research.

Nexam Pro is mainly used in hospitals and clinics with a large urodynamic workload.

All modules, PC, printer and monitor are integrated in a moveable trolley.

Nexam Pro CIM is ready to use water perfused catheters and pressure transducers with Argon (formerly B-D) or Memscap connectors.



## System:

- Trolley:** Nexam trolley with height adjustable monitor arm for TFT flat screen (up to 26"), keyboard and mouse shelf, storage drawer, U-shape accessory rail, infusion pole (O-shape), side shields, 4 wheels with wheel brakes.
- Interface Module:** Combination Interface Module (CIM) with 4 pressure channels (choice of Argon or Memscap connector), 1 EMG connector and Water transducer holder. Mounting clamp and cable included.  
**Note:** Please order AO-EMG if you would like to use the EMG connector to measure EMG.
- Pump:** 10 roll Pump (Nexam Pump Unit)
- U2M:** U2M Main Module with 5 ports
- Flowsensor:** Digital uroflow sensor with wireless Bluetooth connection and Bluetooth Dongle for PC. Funnel, urine container and height adjustable Flowstand included. The wireless uroflow sensor uses 4 AA batteries.
- Remote control:** Bluetooth® remote control RC-1600
- English manuals:** Nexam User's manual, Nexam Service & Installation manual
- Standard included:** Separating transformer, Q (115 V or 230 V)

## Software:

Solar software:

- Solar Patient database software
- Query Module: Database filter and Query options
- Stationary Urodynamic investigation software
- 9 Protocols for each test
- Stationary Urodynamic analysis software
- Hardware diagnostic software

Urodynamic investigation and analysis software:

- Uroflowmetry software
- Cystometry software (CMG)
- Pressure/Flow software

# Nexam Pro CIM, trolley system (U8-4)

## Add-ons

### Additional packages

Article	Picture	Description
AO-UPP C3	✓	<b>Solar Urethral Pressure Profile (UPP) Trolley package</b> Catheter Puller, including mounting clamp for Solar Trolley. UPP software, Gynecology software (combination study) and additional UPP parameters (Dr. Eberhard analysis and Transmission Profile Graph).
AO-UPP C2	✓	<b>Solar Urethral Pressure Profile (UPP) Puller stand package</b> Catheter Puller and Puller stand, height adjustable with clamp. UPP software, Gynecology software (combination study) and additional UPP parameters (Dr. Eberhard analysis and Transmission Profile Graph).
AO-UPP W3	✓	<b>Solar wireless Urethral Pressure Profile (UPP) Trolley package</b> Wireless Catheter Puller, including mounting clamp for Solar Trolley. UPP software, Gynecology software (combination study) and additional UPP parameters (Dr. Eberhard analysis and Transmission Profile Graph).
AO-UPP W2	✓	<b>Solar wireless Urethral Pressure Profile (UPP) Puller stand package</b> Wireless Catheter Puller and Puller stand, height adjustable with clamp. UPP software, Gynecology software and additional UPP parameters (Dr. Eberhard analysis and Transmission Profile Graph).
AO-UPP Manual Pull		<b>Solar Urethral Pressure Profile (UPP) manual pull package</b> UPP software, Gynecology software (combination study) and additional UPP parameters (Dr. Eberhard analysis and Transmission Profile Graph).
AO-Pura Perfusion Set		<b>Pressure Cuff and Flow reducer set for Urethra perfusion</b> Pressure cuff for UPP perfusion with UPP flow reducer set.
AO-EMG		<b>Solar EMG package</b> Solar software for EMG 1 channel. Guarded EMG cable with DIN-5 plug and 3 leads (180 cm).
AO-EMG HS		<b>High speed EMG for CIM, 10 kHz.</b> Software to measure and display High speed/frequency EMG signals. <b>Note:</b> Please order AO-EMG too.
AO-Neuro	✓	<b>Neuro Module</b> Software for EMG 1 channel and Neuro software for free running EMG, pudendal nerve stimulation (PNS) and motor nerve conduction. High speed/frequency EMG and stimulation module, 1 EMG channel, guarded EMG cable with DIN-5 plug and 3 leads (180 cm), 1 stimulation channel, connection cable and mounting clamp, Solar Neuro user's manual. <b>Note:</b> The following items are required for PNS: C040, G34-831 and EMGC-1DIN-SUR-150. Please order them from the Catheters and Accessories catalogue.
AO-Neuro 2EMG		<b>2nd EMG Channel for Neuro Module</b> Neuro software 2nd EMG channel for Free running EMG. Guarded EMG cable with DIN-5 plug and 3 leads (180 cm).
AO-HRAM UD H2O		<b>High Resolution Anorectal Manometry (HRAM) H2O package for Nexam</b> Anorectal Manometry and HRAM / Clouse Contour Plot Software. Manometric Perfusion Pump (MPP Plus), Multi Pressure Interface (MPI) for 12 channels. 10 Argon pressure transducers, 8 flow resistors (0.6 ml/min), 10 water filters and tubes. Manuals (MAN-157 and MAN-161)

# Nexam Pro CIM, trolley system (U8-4)

## Add-ons

### Additional packages

Article	Picture	Description
AO-HRAM UD SS		High Resolution Anorectal Manometry (HRAM) Solid State package for Nexam Anorectal Manometry and HRAM / Clouse Contour Plot Software. Combination Interface Module (CIM-AUX HRIM) for High Resolution Manometry. Rail clamp and connection cable.
AO-BPM Medlab		Blood Pressure / SpO2 interface software for (Medlab) Vitro BP and SpO2 interface software (SSP-BMP Medlab) for Medlab Vitro. Blood Pressure Monitor User's and Installation manual. <b>Note:</b> Monitor has to be purchased locally.
AO-BPM Nonin		Blood Pressure / SpO2 interface software for (Nonin) Avant 2120 BP and SpO2 interface software (SSP-BMP Nonin) for Nonin Avant 2120. Blood Pressure Monitor User's and Installation manual. <b>Note:</b> Monitor has to be purchased locally.

### Additional hardware

Article	Picture	Description
F3BT-PS	✓	Power supply for wireless Flow sensor, medical grade, with 2 m cable and EU, US, UK and AU mains plug. Alternative for batteries.
SDC-4	✓	MMS bus cable, 4 meter for wired setup of the flowsensor
Battery-AA-ALK		Battery, alkaline, AA (set of 25)
Flowchair		Micturition chair, height adjustable, plastic frame with lift-up armrests
Flowchair-P		Micturition chair for children, multi-color, wheels, armrests, detachable foot support
CHA181	✓	Micturition chair, folding, height adjustable

*Nexam systems can also be combined with Luna (U5-1) for wireless recording of pressures and EMG and/or easy ambulatory prolongation of conventional urodynamics!*

### Additional software

Article	Description
SSP-Bio	Biofeedback software
SSP-Anal	Anorectal manometry software
SSP-3D	3D Vector Volume Plot software
SSP-AP	<p>Additional Parameters</p> <ul style="list-style-type: none"><li>• Initial bladder filling</li><li>• 5 compliance markers instead of 1</li><li>• Detrusor Volume Plot</li><li>• Detrusor/Flow plots Griffiths and W/F-Graph</li><li>• UPP Transmission graph and report</li></ul>
SSP-L2	<p>Software Level 2 (Many Results)</p> <ul style="list-style-type: none"><li>• Additional markers: Transmission in Cystometry and Pressure/Flow, non-inhibited vesical contraction, non-inhibited detrusor contraction, Urethral relaxation, Fatigue, Stoptest begin miction, Stoptest stop miction</li><li>• Search detrusor contractions</li><li>• Prompt for extra miction info</li></ul>
HEM-NST-SW	Neuro software: Sensory Threshold (not available for USA)
SSP-TC	<p>Templates and Comments</p> <ul style="list-style-type: none"><li>• Templates for design of standard letters</li><li>• Additional and Medical Comments</li></ul>
NET 600	Network analysis Software for first 2 users

### Manuals

Article	Description
MAN-140	HIS/EMR integration Users & Installation manual
MAN-147	Nexam Benutzerhandbuch (German)
MAN-146	Nexam Gebruikershandleiding (Dutch)



# AMBULATORY URODYNAMICS

# Luna (U5-1)

Easy-to-use, small and lightweight ambulatory recorder for both Classic Ambulatory Urodynamic Monitoring and Natural Filling Urodynamics. Using wireless technology, in-progress investigations can be viewed full screen.

Luna can record up to 24 hours of data on just 1 penlight battery.

Luna can be used in combination with air-charged, solid state or water perfused catheters.



## System:

- Ambulatory Urodynamic recorder:** Wireless recorder with 3 pressures channels with Lemo-4 connector, 1 connector for EMG channel  
**Note:** Order AO-Luna EMG if you would like to measure EMG.
- English manuals:** Luna User's & Service manual  
Luna Quick start computer & buttons
- Standard included:** Blue leather carrying bag  
Bluetooth dongle for PC  
USB interface cable

## Software:

Luna software:

- Luna Patient database software
- Ambulatory Urodynamic investigation software
- Ambulatory Urodynamic analysis software
- Hardware diagnostic software

Classic Ambulatory Urodynamic Monitoring:

- Ambulatory Urodynamic Monitoring software
- Uroflow software
- Pressure/Flow

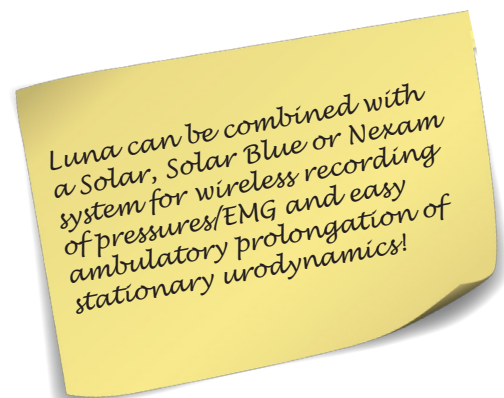
Natural Filling Urodynamics:

- Uroflow software
- Cystometry software
- Pressure/Flow

**Note:** Order AO-Uroflow if you would like to measure uroflow.

Virtual Instructor Program™:

The Virtual Instructor Program™ (VIP) guides the user through the software program of the Luna to successfully complete the Urodynamic setup with minimal training.





### Additional packages

Article	Picture	Description
AO-Uroflow		<b>Wireless Flowmeter and Flowstand</b> Digital Flowsensor with wireless Bluetooth connection to PC, including height adjustable Flowstand, funnel and urine container.
AO-Luna EMG		<b>Luna EMG Package</b> Software for EMG 1 channel. Guarded EMG cable Lemo-3 with 3 leads (60 cm).

### Additional hardware

Article	Picture	Description
Flowchair	✓	Micturition chair, height adjustable, plastic frame with lift-up armrests, ring to hold funnel and Funnel with long spout
CHA181	✓	Micturition chair, folding, height adjustable
Flowchair-P	✓	Micturition chair for children, multi-color with wheels, armrests and detachable foot support
AMB P-BAG	✓	Pediatric multi-color leather carrying bag
LUN-Cond		Luna Conductance interface for automatic leakage detection <b>Note:</b> only available in combination with special solid state catheter
F3BT-PS	✓	Power supply for wireless Flow sensor, medical grade, with 2 m cable and EU, US, UK and AU mains plug. Alternative for batteries.
Battery-AA-ALK		Battery, alkaline, AA (set of 25)

### Additional Software

Article	Description
NET 600	Network analysis Software for first 2 users

### Manuals

Article	Description
MAN-036	Luna Benutzer- & Servicehandbuch (German)
MAN-140	HIS/EMR integration Users & Installation manual



# ULTRASOUND BLADDER SCANNERS

# Scanmaster (U6-1)

Easy to use USB Ultrasound Scanner for bladder volume measurement (PVR).

The Scanmaster provides a real-time ultrasound Pre-scan for bladder detection.

Can be added to the Flowmaster, Solar, Solar Blue and Nexam systems for an integrated solution to measure and store PVR results automatically in the MMS Database and print on the report!



## System:

<b>Ultrasound bladder scanner:</b>	Ultrasonic USB connected Scanner with USB cable 2.30 MHz probe frequency 120 degrees sweep angle, 12 scan planes
<b>English manuals:</b>	User's and Service manual, User instruction short form (multiple languages)
<b>Standard included:</b>	Suitcase and holder for scanner One 250 ml bottle of ultrasonic gel USB memory stick

## Software:

Post Voiding Residual (PVR) software

**Note:** Please order SSP-AP option for your Solar, Solar Blue or Nexam system if you would like to measure Initial Bladder Filling.

### Additional hardware

Article	Picture	Description
Scanm-bskt	✓	Basket including bracket for scanner holder and screw clamp
Scanm-cart	✓	Scanmaster Cart, including: <ul style="list-style-type: none"><li>• S Pole IV</li><li>• Laptop shelf</li><li>• Cart handle</li><li>• Basket with holder bracket and screw clamp</li></ul>
SSC-25	✓	Scanmaster holder bracket with clamp for accessory rail
SSC-26	✓	Scanmaster holder bracket with ø 38 mm clamp
SSC-27	✓	Scanmaster holder bracket with screw clamp

**Note:** Laborie offers global exclusivity selling Scanmaster to Urology, Gynecology and Uro-Gynecology departments. Please contact us first if you wish to sell Scanmaster outside these specialities.

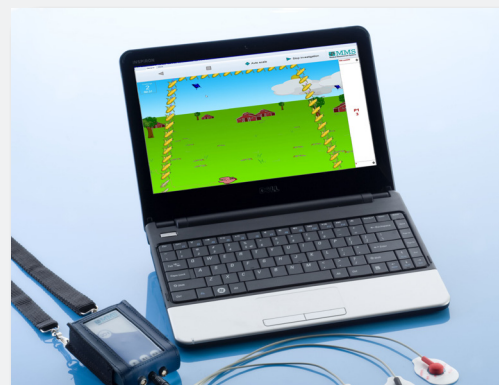


# BIOFEEDBACK SYSTEMS

# Solar Biofeedback system (U4-7)

Wireless Biofeedback system based on the Solar patient database platform.

With Solar Biofeedback hospitals and private offices have the opportunity to perform Biofeedback on 1 or 2 EMG channels, 1 pressure channel or a combination of max. 2 channels.



## System:

**Interface module:** Wireless Patient Module (WPM) for 1 pressure channel with Lemo-4 connector and 2 EMG channels with Lemo-3 connector

**English manuals:** Solar Uro User's manual, Solar Uro/GI Service and Installation manual

**Standard included:** 2 guarded EMG cables with 3 leads (60 cm)  
Blue carrying bag for WPM  
Bluetooth dongle for PC

## Software:

Solar software:

- Solar Basic Patient database software
- Hardware diagnostic software

Investigation and analysis software:

- Biofeedback software
- Solar software for 2 EMG channels



### Additional hardware

Article	Picture	Description
Flowchair		Micturition chair, height adjustable, plastic frame with lift-up armrests
Flowchair-P		Micturition chair for children, multi-color, wheels, armrests, detachable foot support
CHA181	✓	Micturition chair, folding, height adjustable

### Additional software

Article	Description
NET 600	Network analysis Software for first 2 users
SSP-QM	Query Module: Database filter and Query options
SSP-TC	Templates and Comments <ul style="list-style-type: none"><li>• Templates for design of standard letters</li><li>• Additional and Medical Comments</li></ul>

### Manuals

Article	Description
MAN-120	Solar Manuel d'Utilisation (French)
MAN-046	Solar Benutzerhandbuch (German)
MAN-045	Solar Gebruikershandleiding (Dutch)
MAN-140	HIS/EMR integration Users & Installation manual

# Accessories Urodynamics

## Trolley accessories:

FPMA-D200-B	Monitor arm for TFT flat screen on Solar trolley
Dual Monitor Arm	Monitor arm for 2 TFT flat screens, up to 22 " (Nexam)
Trolley Cover	Cover for trolley

## Infusion poles:

524-6316	IV pole (22 mm) with attachment for Solar Blue on Sonesta
IV Pole Silver	Infusion pole for Solar Silver trolley, fixed, 4 hooks, mounting clamps and 1 accessory rail
IV Pole Gold	Infusion pole for Solar Gold trolley, adjustable, 4 hooks, mounting clamps and 1 accessory rail
IV Pole O	Infusion pole, O-shape, for Nexam Pro trolley including mounting clamps
IV Pole Trolley	Infusion pole for rail mounting, stainless steel, $\varnothing$ 25 mm, including clamp and 4 hooks (water bag)

## Accessory rails:

SAR-55	Solar accessory rail including locking screw, length 55 cm
SAR-70	Solar accessory rail including locking screw, length 70 cm

## Accessories to mount on Solar accessory rails:

10 10 075	Pump tube holder with clamp
10 10 080	Journal holder with clamp
10 10 679	Cable holder with clamp
10 10 958	Glove box holder with clamp, 20x13.4x9 cm
10 10 977	Basket for catheter, pump tubes, EMG electrodes etc. with clamp (16x16x16 cm)

## Mounting clamps:

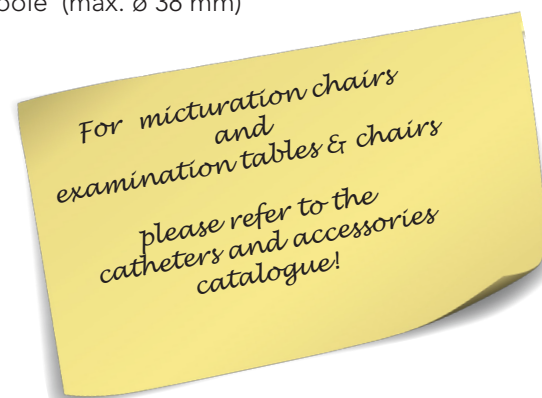
SSC-2	Solar Clamp for a round pole, 20-40 mm
SSC-3	Solar Clamp with locking screw for accessory rail (for Pump or CIM)
SSC-4	Solar Clamp without locking screw for accessory rail
SSC-22	Universal clamp to mount Solar Blue module on a pole (max. $\varnothing$ 38 mm)
SSC-28	Clamp (plastic) for IV O-pole, $\varnothing$ 25 mm

## MMS bus cabling:

SDC-0.3	MMS bus cable, 30 cm
SDC-0.6	MMS bus cable, 60 cm
SDC-1.6	MMS bus cable, 1.6 meter
SDC-4	MMS bus cable, 4 meter
SDC-10	MMS bus cable, 10 meter

## Power cabling:

PC-NL	Power cable Netherlands
PC-UK	Power cable UK
PE-3	Potential equalization points, 3 pcs



# Accessories Urodynamics

## Safety Sets:

Safety set 115V Q	Solar safety set, with extra quiet safety module and USA power cord
Safety Set 230V Q	Solar safety set, with extra quiet safety module and EURO power cord
SBL SAFETY 115V	Solar Blue safety set, including safety module and USA power cord
SBL SAFETY 230V	Solar Blue safety set, including safety module and EURO power cord

## Accessories for Wireless Catheter Puller:

S-Puller-BTGL15	Catheter Puller 15 cm guider
S-Puller-BTSL15	Catheter Puller 15 cm slider

## Additional flowsensor, flowstand, funnel and urine container:

Flowsensor3-BT	Digital Flowsensor, wireless connection to PC, runs on 4 AA batteries (without flowstand, funnel and urine container)
Flowstand	Flowstand, height adjustable ( without funnel and container)
UD573	Funnel
UD574	Urine container

## Flowsensor support for Sonesta Chairs:

SFS Support	Sonesta flowsensor support
-------------	----------------------------

## Batteries:

Battery-AA-R	Battery for ireless Catheter Puller, Rechargeable NiMH, AA (set of 4)
Battery-CR2025	Battery for remote control type RC 1200 (set of 5)

## Paint for Solar Trolleys and S Pole III:

Paint 2011	RAL 2011 touch-up paint (Orange)
Paint 5014	RAL 5014 touch-up paint (Blue)
Paint 7035	RAL 7035 touch-up paint (Grey)
Paint 9016	RAL 9016 touch-up paint (White)

## Transducer holder for CIM:

C/Holder	Transducer holder for 4x DT-XX on CIM module
----------	--

## Filling Pump and Infused Volume Modules (available in Japan only):

PIM-CO2	Solar CO2 Module (no cable, no clamp) <ul style="list-style-type: none"><li>• One-way check valve</li><li>• Gas filter</li></ul>
---------	--

# Accessories Urodynamics

Article code	Description	U1-1	U2-1	U10-1	U3-1	U3-5	U3-3	U3-4	U4-1	U4-2	U4-3	U4-4	U4-5	U4-6	U4-7	U8-3	U8-4	U5-1	U6-1
10 10 075	Pump tube holder with clamp									x	x	x	x			x	x		
10 10 080	Journal, paper holder with clamp									x	x	x	x			x	x		
10 10 679	Cable holder with clamp									x	x	x	x			x	x		
10 10 958	Glove box holder with clamp, 20x13.4x9 cm									x	x	x	x			x	x		
10 10 977	Basket for catheters, pump tubes, EMG electrodes etc. with clamp, 16x16x16 cm									x	x	x	x			x	x		
524-6316	IV pole (22 mm) with attachment for Solar Blue on Sonesta				x	x													
Battery-AA-R	Rechargeable battery AA type for wireless Catheter Puller (set of 4)				x	x	x	x		x	x	x	x			x	x		
Battery-CR2025	Battery CR-2025 for RC 1200 remote control (set of 5)				x	x	x	x	x	x	x	x	x						
C/HOLDER	Transducerholder for 4x DT-XX on CIM module									x		x						x	
Dual Monitor Arm	Monitor arm for 2 TFT flats screens (Nexam)															x	x		
Flowsensor3-BT	Digital Flowsensor, wireless connection to PC (without flowstand, funnel and urine container)	x			x	x	x	x	x	x	x	x	x	x		x	x		
Flowstand	Flowstand, height adjustable (no funnel, no container)	x	x																
FPMA-D200-B	Black monitor arm for TFT flatscreen, screw type for Solar trolley									x	x								
IV Pole Gold	Infusion pole for Solar Gold, adjustable, 4 hooks, mounting clamps, 1 accessory rail									x	x	x							
IV Pole O	Infusion pole, O-shape, including mounting clamps															x	x		
IV Pole Silver	Infusion pole for Solar Silver, fixed, 4 hooks, mounting clamps, 1 accessory rail									x		x	x						
IV Pole Trolley	Infusion pole for rail mounting, stainless steel, ø 25 mm, incl. clamp and 4 hooks (water bag)															x	x		
PAINT 2011	RAL 2011 touch-up paint (Orange)															x	x		
PAINT 5014	RAL 5014 touch-up paint (Blue)						x	x		x	x	x	x						
PAINT 7035	RAL 7035 touch-up paint (Grey)						x	x	x	x	x	x	x						
PAINT 9016	RAL 9016 touch-up paint (White)															x	x		
PC-NL	Power cable Netherlands						x	x		x	x	x	x			x	x		
PC-UK	Power cable UK						x	x		x	x	x	x			x	x		
PE-3	Potential equalization points, 3 pcs															x	x		
PIM-CO2	Solar CO2 Module (Japan only)				x	x	x	x	x	x	x	x	x			x	x		
SAR-55	Solar accessory rail including locking screw, length 55 cm									x	x	x	x						
SAR-70	Solar accessory rail including locking screw, length 70 cm									x	x	x	x						
SBL SAFETY 115V	Solar Blue safety set, including safety module and USA power cord				x	x													
SBL SAFETY 230V	Solar Blue safety set, including safety module and EURO power cord				x	x													
SBL-TRDH	Transducer holder DT-XX or Memscap for 4 transducers, clip clamp ø 25 and 38 mm				x	x	x	x											
SDC-0.3	MMS bus cable, 30 cm				x	x	x	x	x	x	x	x	x			x	x		
SDC-0.6	MMS bus cable, 60 cm				x	x	x	x	x	x	x	x	x			x	x		
SDC-1.6	MMS bus cable, 1.6 meter				x	x	x	x	x	x	x	x	x			x	x		
SDC-10	MMS bus cable, 10 meter	x			x	x	x	x	x	x	x	x	x			x	x		
SFS Support	Sonesta flowsensor support				x	x	x	x	x	x	x	x	x	x	x	x	x		
S-Puller-BTGL15	Catheter Puller guider, 15 cm				x	x	x	x		x	x	x	x			x	x		
S-Puller-BTGL40	Catheter Puller guider, 40 cm																		
S-Puller-BTSL15	Catheter Puller slider, 15 cm				x	x	x	x		x	x	x	x			x	x		
SSC-2	Solar Clamp for a round pole, 20-40 mm								x	x	x	x	x						
SSC-3	Solar Clamp with locking screw for accessory rail (for Pump or CIM)				x	x				x	x	x	x			x	x		
SSC-4	Solar Clamp without locking screw for accessory rail									x	x	x	x			x	x		
SSC-22	Universal clamp to mount Solar Blue module on a pole (max. ø 38 mm)				x	x	x	x											
SSC-28	Plastic clamp for O-Pole, ø 25 mm															x	x		
Trolley Cover	Cover for trolley									x	x	x	x			x	x		
UD573	Funnel	x	x		x	x	x	x	x	x	x	x	x	x		x	x	x	
UD574	Urine container	x	x		x	x	x	x	x	x	x	x	x	x		x	x	x	

## UPP packages

AO-UPP C1



including mounting clamp for Solar Blue

AO-UPP C2



AO-UPP C3



AO-SBL UPP WP1



including mounting clamp for Solar Blue

AO-SBL UPP WP2



AO-UPP W2



AO-UPP WP3

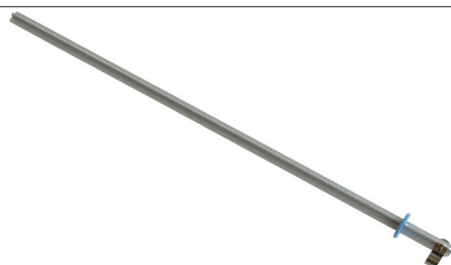


## Accessories for wireless UPP puller

S-Puller-BTGL15



S-Puller-BTSL15



## Flowstand and Flowchairs

Flowstand



Flowchair



Flowchair-P



CHA181



## Accessories for Stille-Sonesta tables/chairs

524-6316



SFS Support

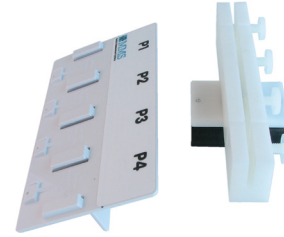
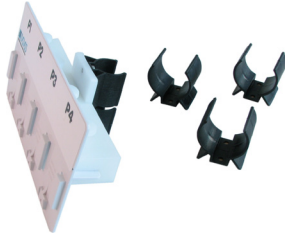


## Solar Blue accessories

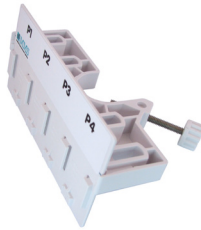
AO-TRDH PL



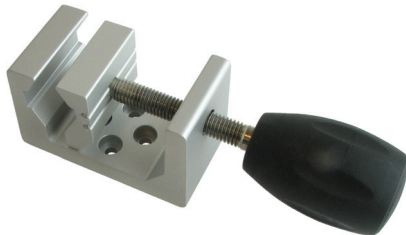
SBL-TRDH



682274/093



SSC-22



SSC-24



MMS 84-381



SBL-Battery



DTX-1023-100



Mouse Tray



### Solar accessories

FPMA-D200-B



SSC-H



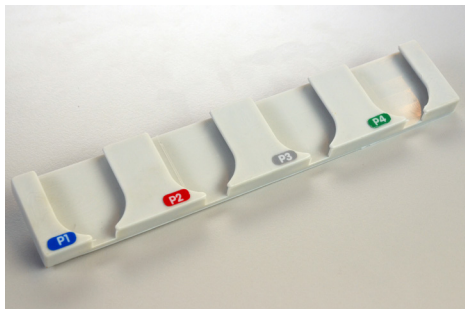
IV Pole Silver



IV Pole Gold



C/HOLDER

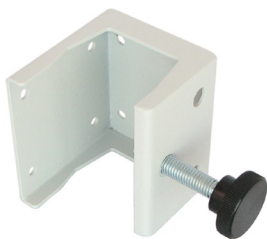


C/HOLDER-Mem



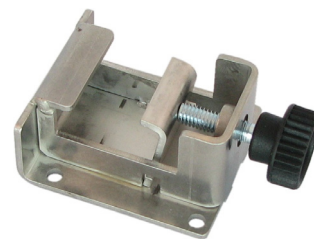
### Mounting clamps

SSC-2



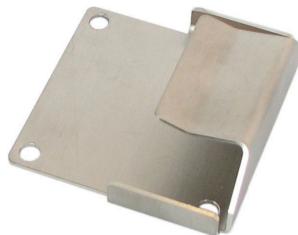
for Solar only

SSC-3



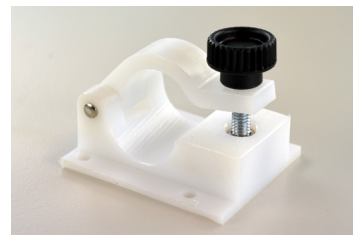
for Solar and Nexam

SSC-4



or Solar and Nexam

SSC-28

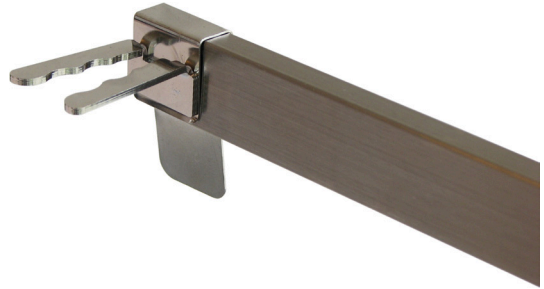
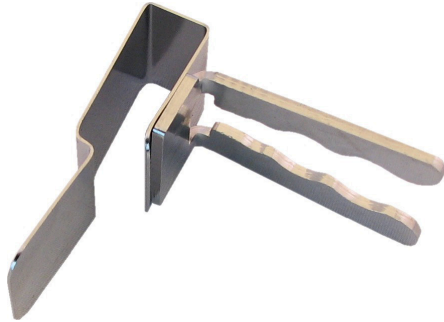


for Nexam only



## Solar & Nexam accessories

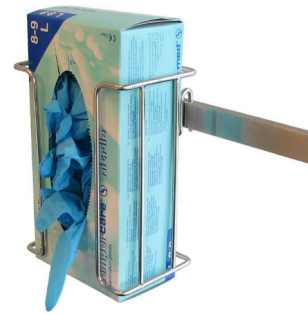
10 10 075



10 10 679



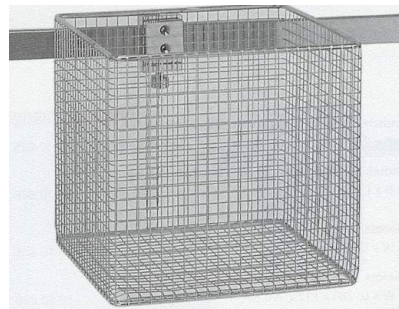
10 10 958



10 10 080



10 10 977



PAINT 2011 (orange)  
 PAINT 5014 (blue)  
 PAINT 7035 (grey)  
 PAINT 9016 (white)



### Nexam accessories

Dual Monitor Arm



IV Pole O



IV Pole trolley



Trolley Cover



### Miscellaneous

AO-Neuro



F3BT-PS



SDC-0.3  
SDC-0,6  
SDC-1,6  
SDC-4  
SDC-10



AMB P-BAG



## Scanmaster accessories

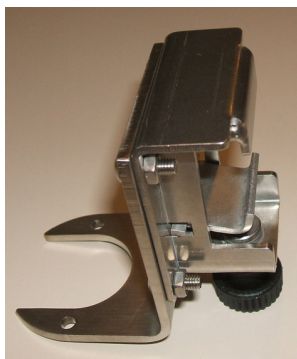
Scanm-bskt



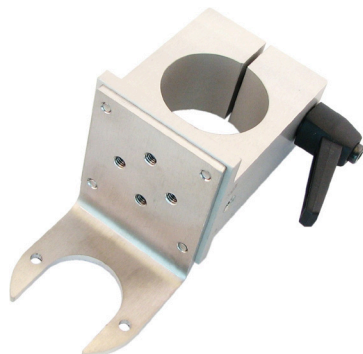
Scanm-cart



SSC-25



SSC-26



SSC-27





# pH AND pH-IMPEDANCE RECORDERS

# Ohmega R pH (G2-3)

User-friendly, small and lightweight ambulatory pH recorder to diagnose Gastro-Esophageal Reflux Diseases (GERD) and non-cardiac chest pain.

Ohmega R pH is using wireless Bluetooth® technology to display pH waveforms real-time on a monitor. The Virtual Instructor Program™ (VIP) guides the user through the software program of the Ohmega.

Prepared for easy upgrade to a combined pH- Impedance recorder.



## System:

### Ambulatory pH Recorder:

Wireless recorder with

- 4 pH channels Antimony or 2 pH channels Glass, RJ-45
- 2 pH channels ISFET, RJ-11
- 1 LES locator pressure channel, Lemo-4
- connector for 12 Impedance channels (13 rings), RJ-45

**Note:** Please order AO-OHM IMP to measure, store and analyze impedance.

- USB cable and Bluetooth dongle for PC
- Blue leather carrying bag

### English manuals:

Ohmega User's & Service manual, Ohmega Quick start computer & buttons, Ohmega "Total Reflux Monitoring" DVD (Impedance theory, Examination procedure, Curve interpretation).

## Software:

Ohmega software:

- Patient database software
- Ambulatory pH Gastro investigation and analysis software
- Virtual Instructor Program™
- Hardware diagnostic software

Ambulatory pH investigation and analysis software:

- pH analysis
- Symptom analysis
- Adult and Pediatric pH analysis

### Additional hardware

Article	Picture	Description
AMB P-BAG	✓	Pediatric multi-color leather carrying bag
Battery-AA-ALK		Battery, alkaline, AA (set of 25)

### Additional software

Article	Description
NET 600	Network analysis software for first 2 users (an overview of all Network solutions is available in the Network chapter. of this catalogue) <b>Note:</b> if you use the Ohmega R pH without a Solar system you must add a USB Option key.
AO-OHM IMP	Impedance option for Ohmega R pH

### Manuals

Article	Description
MAN-114	Ohmega Manuel d'Utilisation et d'Entretien (French)
MAN-050	Ohmega Benutzer- & Servicehandbuch (German)
MAN-051	Ohmega Gebruikershandleiding (Dutch)
MAN-140	HIS/EMR integration Users & Installation manual

*It is also possible to order other Ohmega types, like an Ohmega with 2-4 pressure channels and/or a Sleep lab interface.  
For more information, kindly refer to the "Options on request" chapter of this catalogue or contact us.*

# Ohmega R (G2-1)

User-friendly, small and lightweight ambulatory pH-Impedance recorder to diagnose Gastro-Esophageal Reflux Diseases (GERD) and non-cardiac chest pain.

Ohmega R detects reflux activity using Impedance and categorizes episodes as acidic or non-acidic.

Ohmega R is using wireless Bluetooth® technology to display pH-Impedance waveforms real-time on a monitor. The Virtual Instructor Program™ (VIP) guides the user through the software program of the Ohmega.



## System:

### Ambulatory pH Recorder:

Wireless recorder with

- 4 pH channels Antimony or 2 pH channels Glass, RJ-45
- 2 pH channels ISFET, RJ-11
- 12 Impedance channels (13 rings), RJ-45
- 1 LES locator pressure channel, Lemo-4
- USB cable and Bluetooth dongle for PC
- Blue leather carrying bag

**Note:** Please order AO-OHM IMP to measure, store and analyze impedance.

### English manuals:

Ohmega User's & Service manual, Ohmega Quick start computer & buttons, Ohmega "Total Reflux Monitoring" DVD (Impedance theory, Examination procedure, Curve interpretation).

## Software:

Ohmega software:

- Patient database software
- Ambulatory Imp-pH Gastro investigation and analysis software
- Virtual Instructor Program™
- Hardware diagnostic software

Ambulatory Impedance-pH investigation and analysis software:

- pH analysis
- Impedance analysis
- Symptom analysis
- Combined Impedance-pH analysis
- Adult and Pediatric pH analysis



### Additional hardware

Article	Picture	Description
AMB P-BAG	✓	Pediatric multi-color leather carrying bag
Battery-AA-ALK		Battery, alkaline, AA (set of 25)

### Additional software

Article	Description
NET 600	Network analysis software for first 2 users (an overview of all Network solutions is available in the Network chapter. of this catalogue) <b>Note:</b> if you use the Ohmega R pH without a Solar system you must add a USB Option key.

### Manuals

Article	Description
MAN-114	Ohmega Manuel d'Utilisation et d'Entretien (French)
MAN-050	Ohmega Benutzer- & Servicehandbuch (German)
MAN-051	Ohmega Gebruikershandleiding (Dutch)
MAN-140	HIS/EMR integration Users & Installation manual

*It is also possible to order other Ohmega types, like an Ohmega with 2-4 pressure channels and/or a Sleep lab interface.  
For more information, kindly refer to the "Options on request" chapter of this catalogue or contact us.*



# CONVENTIONAL MANOMETRY SYSTEMS

# Solar GI LGI H<sub>2</sub>O, Compact Pole System (G3-3)

Cost-effective lower GI system offering all tools needed for Anorectal manometry recording up to 4 pressures.

Solar GI LGI H<sub>2</sub>O Compact Pole system has a small footprint, is easy to move around and ready to use a wide range of single use and reusable water perfused anorectal manometry catheters.



## System:

- Pole:** Solar Pole III (ø 38 mm, 130 cm) on wheelbase with 4 double roll wheels and wheel brakes and 2 hooks for water bag/pressure cuff.
- Interface Module:** Solar Combination Interface Module (CIM) with 4 pressure channels with Argon connector, 1 EMG channel and Water transducer holder. Clamps, cables and medical grade power supply for U2M with EU, US, UK and AU mains plugs are included.  
**Note:** Please order AO-EMG if you would like to measure EMG.
- Perfusion:** 4-channel perfusion system set-up with 4 Argon pressure transducers, DT-NN with a flow rate of 0.5 ml/min, 4-way manifold for the 4 pressure sensors and a cuff for perfusion.
- U2M:** Solar U2M Main Module with 5 ports and infrared receiver
- Remote control:** Infrared remote control RC-1200 (blue)
- English manuals:** Solar GI Manometry User's manual, Solar GI Service and Installation manual

## Software:

Solar GI software:

- Solar GI Patient database software
- Query Module: Database filter and Query options
- Stationary Lower GI investigation software
- 9 Protocols for each test
- Stationary Lower GI analysis software
- Hardware diagnostic software

Lower GI investigation and analysis software:

- Anorectal manometry software including
- Resting, Squeeze, Endurance squeeze, Push, Cough, RAIR, Sensation analysis

# Solar GI LGI H<sub>2</sub>O, Compact Pole System (G3-3)

## Add-ons

### Additional packages

Article	Picture	Description
AO-GI Puller C1	✓	<b>Solar GI Catheter Puller for Pole</b> Solar GI Catheter Puller, including mounting clamp for Solar Pole.
AO-GI Puller W1	✓	<b>Solar GI wireless Catheter Puller for Pole</b> Wireless Solar GI Catheter Puller including mounting clamp for Solar Pole and Bluetooth dongle for PC.
AO-EMG		<b>Solar EMG package</b> Solar software for EMG 1 channel. Guarded EMG cable with DIN-5 plug and 3 leads (180 cm).
AO-EMG HS		<b>High speed EMG for CIM, 10 kHz.</b> Software to measure and display High speed/frequency EMG signals. <b>Note:</b> Please order AO-EMG too.
AO-Solar SR		<b>Solar Swallow and Respiration package</b> Additional connectors on CIM for 1 swallow and 1 respiration channel. Respiration sensor kit (Adult). <b>Note:</b> EMG and Swallow cannot be measured simultaneously.
AO-BPM Medlab		<b>Blood Pressure and SpO2 interface software for (Medlab) Vitro, including manual</b>
AO-BPM Nonin		<b>Blood Pressure and SpO2 interface software for (Nonin) Avant 2120, including manual</b>

### Additional hardware

Article	Picture	Description
SSC-H	✓	2 hooks for a waterbag/pressure cuff. Can be mounted to a ø38 mm pole (S Pole III and S Pole IV).

# Solar GI LGI H<sub>2</sub>O, Compact Pole System (G3-3)

## Additional software

Article	Description
SSP-3D	3D Vector Volume Plot
SSP-Bio	Biofeedback software
SGI-UGI-1	Upper GI software package, including Esophageal Body and Lower Esophageal Sphincter software
SSP-TC	Templates and Comments <ul style="list-style-type: none"><li>• Templates for design of standard letters</li><li>• Additional and Medical Comments</li></ul>
NET 600	Network analysis Software for first 2 users

## Manuals

Article	Description
MAN-140	HIS/EMR integration Users & Installation manual
MAN-119	Solar GI Manométrie Manuel d'Utilisation (French)
MAN-048	Solar GI Manometrie Benutzerhandbuch (German)
MAN-047	Solar GI Manometrie Gebruikershandleiding (Dutch)



# Solar GI UGI H<sub>2</sub>O, Trolley system (G3-5)

State-of-the-art upper GI system offering all of the GI diagnostic tools needed for today's medical professionals performing Esophageal manometry.

Solar GI UGI H<sub>2</sub>O is ready to use water perfused catheters and pressure transducers with Argon (formerly) Becton-Dickinson connectors.

Solar GI UGI H<sub>2</sub>O measures up to 8 pressures.

Prepared for easy upgrade to a 24 or 36 channel HRM system.



## System:

- Trolley:** Solar Silver Trolley with 12 cm wheels and wheel brakes, keyboard shelf and accessory rail at the top of one side of the trolley
- Interface Module:** Multi Pressure Interface (MPI) for max. 12 pressure channels with Argon connector. Mounting clamps, cables and power cord EU or US are included.
- Pump:** Electrically powered Solar Manometric Perfusion Pump (MPP Plus) including air compressor, water container and dish. Automatic balloon filling functionality (anorectal manometry) Including: 10 Argon pressure transducers, 8 flow resistors (0.6 ml/min), 8 tubes and gasket, 10 water filters.
- U2M:** Solar U2M Main Module with 5 ports and infrared receiver
- Remote control:** Infrared remote control RC-1200 (blue)
- English manuals:** Solar GI Manometry User's manual, Solar GI Service and Installation manual
- Standard included:** Solar Safety set , Q (115V or 230V)  
Infrared receiver

## Software:

Solar GI software:

- Solar GI Patient database software
- 9 Protocols for each test
- Stationary Upper GI investigation software
- Query Module: Database filter and Query options
- Stationary Upper GI analysis software
- Hardware diagnostic software

Upper GI investigation and analysis software:

- Esophageal Body software
- Lower Esophageal Sphincter software (LES)



# Solar GI UGI H<sub>2</sub>O, Trolley system (G3-5)

## Add-ons

### Additional packages

Article	Picture	Description
AO-HRAM C		<b>Solar HRAM package for Conventional Manometry systems</b> High Resolution Anorectal Manometry software. Solar HRM User's manual. <b>Note:</b> Please order SSP-Anal (anorectal manometry software) too.
AO-EMG CIM		<b>Solar EMG Module</b> Solar software for EMG 1 channel. CIM module with 1 EMG channel DIN-5, 1 guarded EMG cable with DIN-5 plug and 3 leads (180cm), connection cable and mounting clamp for Solar Trolley.
AO-EMG HS		<b>High speed EMG for CIM, 10 kHz.</b> Software to measure and display High speed/frequency EMG signals. <b>Note:</b> Please order AO-EMG CIM too.
AO-Solar SR		<b>Solar Swallow and Respiration package</b> Additional connectors on CIM for 1 swallow and 1 respiration channel. Respiration sensor kit (Adult). <b>Note:</b> EMG and Swallow cannot be measured simultaneously.
AO-GI Puller C2	✓	<b>Solar GI Catheter Puller and Puller stand</b> Solar GI Catheter Puller and Puller stand, height adjustable with clamp.
AO-GI Puller C3	✓	<b>Solar GI Catheter Puller for Trolley</b> Solar GI Catheter Puller, including mounting clamp for Solar Trolley.
AO-GI Puller W2	✓	<b>Solar GI wireless Catheter Puller and Puller stand</b> Wireless Solar GI Catheter Puller, Puller stand, height adjustable with clamp and Bluetooth Dongle for PC.
AO-GI Puller W3	✓	<b>Solar GI wireless Catheter Puller for Trolley</b> Wireless Solar GI Catheter Puller, including mounting clamp for Solar Trolley and Bluetooth Dongle for PC.
AO-Neuro	✓	<b>Neuro Module</b> Software for EMG 1 channel and Neuro software for free running EMG, pudendal nerve stimulation (PNS) and motor nerve conduction. High speed/frequency EMG and stimulation module, 1 EMG channel, guarded EMG cable with DIN-5 plug and 3 leads (180 cm), 1 stimulation channel, connection cable and mounting clamp, Solar Neuro user's manual. <b>Note:</b> The following items are required for PNS: C040, G34-831 and EMGC-1DIN-SUR-150. Please order them from the Catheters and Accessories catalogue.
AO-Neuro 2EMG		<b>2nd EMG Channel for Neuro Module</b> Neuro software 2nd EMG channel for Free running EMG. Guarded EMG cable with DIN-5 plug and 3 leads (180 cm).
AO-Solar EGG	✓	<b>Solar EGG Module (not available in the USA)</b> EGG measuring and analysis software. EGG module with 6 EGG channels, 1 artifact detection channel, EGG cable set, respiration sensor kit (for artifact detection), connection cable, mounting clamp for Solar Trolley, EGG user's manual.
AO-SGP		<b>Solar Gold Trolley package</b> Package to upgrade Solar Silver Trolley to a Solar Gold Trolley, including PC cable cover, 2 blue side shields, printer shelf, 1 extra accessory rail.

### Additional Packages

Article	Picture	Description
AO-BPM Medlab		Blood Pressure and SpO2 interface software for (Medlab) Vitro, including manual
AO-BPM Nonin		Blood Pressure and SpO2 interface software for (Nonin) Avant 2120, including manual
AO-EMG 2C		EMG package with classic EMG cable (EMGC-D5-TP, EMGC-TP-SUR) Software for EMG 1 channel Guarded EMG cable for 3 electrodes with DIN 42802 and DIN-5 connector, 180 cm Guarded EMG cable with press stud and DIN 42802, 30 cm, set of 3

### Additional hardware

Article	Picture	Description
MPP-A		Air channel set: Tube with splitter, flow resistor 4 ml/min, air filter

### Additional software

Article	Description
SGI-UES	Upper Esophageal Sphincter software (UES)
SSP-Anal	Anorectal manometry software
SSP-3D	3D Vector Volume Plot
AO-Oddi	Sphincter of Oddi manometry (Biliary) software and manual
SGI/COLON	Colon manometry Software
HEM-NST-SW	Neuro software: Sensory Threshold (not available for USA)
NET 600	Network analysis Software for first 2 users
SGI/AD	Antro-Duodenal/Small Bowel software
SSP-Bio	Biofeedback software
SSP-TC	Templates and Comments <ul style="list-style-type: none"> <li>• Templates for design of standard letters</li> <li>• Additional and Medical Comments</li> </ul>

### Manuals

Article	Description
MAN-140	HIS/EMR integration Users & Installation manual
MAN-119	Solar GI Manométrie Manuel d'Utilisation (French)
MAN-048	Solar GI Manometrie Benutzerhandbuch (German)
MAN-047	Solar GI Manometrie Gebruikershandleiding (Dutch)

# Solar GI LGI H<sub>2</sub>O, Trolley system (G3-6)

State-of-the-art lower GI system offering all of the GI diagnostic tools needed for today's medical professionals performing Anorectal manometry.

Solar GI LGI H<sub>2</sub>O measures up to 8 pressures.

All Solar modules, PC, printer and monitor are integrated in a moveable trolley.

Solar GI UGI H<sub>2</sub>O is ready to use water perfused catheters and pressure transducers with Argon (formerly Becton-Dickinson) connectors.



## System:

- Trolley:** Solar Silver Trolley with 12 cm wheels and wheel brakes, keyboard shelf and accessory rail at the top of one side of the trolley.
- Interface Module:** Solar Combination Interface Module (CIM) with 8 pressure channels with Argon connector, 1 EMG channel and Water transducer holder. Clamps, cables and medical grade power supply for U2M with EU, US, UK and AU mains plugs are included.  
**Note:** Please order AO-EMG if you would like to measure EMG.
- Pump:** Electrically powered Solar Manometric Perfusion Pump (MPP Plus) including air compressor, water container and dish. Automatic balloon filling functionality (anorectal manometry)  
Including: 10 Argon pressure transducers, 8 flow resistors (0.6 ml/min), 8 tubes and gasket, 10 water filters.
- U2M:** Solar U2M Main Module with 5 ports
- Remote control:** Infrared remote control RC-1200 (blue)
- English manuals:** Solar GI Manometry User's manual, Solar GI Service and Installation manual, MMS Perfusion Pump Maintenance instructions
- Standard included:** Solar Safety set, Q (115V or 230V)  
Infrared receiver

## Software:

Solar GI software:

- Solar GI Patient database software
- Query Module: Database filter and Query options
- Stationary Lower GI investigation software
- 9 Protocols for each test
- Stationary Lower GI analysis software
- Hardware diagnostic software

Lower GI investigation and analysis software:

- Resting
- Squeeze
- Endurance squeeze
- Push
- Cough, RAIR, Sensation analysis

# Solar GI LGI H<sub>2</sub>O, Trolley system (G3-6)

## Add-ons

### Additional packages

Article	Picture	Description
AO-HRAM C		<b>Solar HRAM package for Conventional Manometry systems</b> High Resolution Anorectal Manometry software. Solar HRM User's manual.
AO-EMG		<b>Solar EMG package</b> Solar software for EMG 1 channel. Guarded EMG cable with DIN-5 plug and 3 leads (180 cm).
AO-EMG HS		<b>High speed EMG for CIM, 10 kHz.</b> Software to measure and display High speed/frequency EMG signals. Note: Please order AO-EMG too.
AO-GI Puller C2	✓	<b>Solar GI Catheter Puller and Puller stand</b> Solar GI Catheter Puller and Puller stand, height adjustable with clamp.
AO-GI Puller C3	✓	<b>Solar GI Catheter Puller for Trolley</b> Solar GI Catheter Puller, including mounting clamp for Solar Trolley.
AO-GI Puller W2	✓	<b>Solar GI wireless Catheter Puller and Puller stand</b> Wireless Solar GI Catheter Puller, Puller stand, height adjustable with clamp and Bluetooth Dongle for PC.
AO-GI Puller W3	✓	<b>Solar GI wireless Catheter Puller for Trolley</b> Wireless Solar GI Catheter Puller, including mounting clamp for Solar Trolley and Bluetooth Dongle for PC.
AO-Neuro	✓	<b>Neuro Module</b> Software for EMG 1 channel and Neuro software for free running EMG, pudendal nerve stimulation (PNS) and motor nerve conduction. High speed/frequency EMG and stimulation module, 1 EMG channel, guarded EMG cable with DIN-5 plug and 3 leads (180 cm), 1 stimulation channel, connection cable and mounting clamp, Solar Neuro user's manual. <b>Note:</b> The following items are required for PNS: C040, G34-831 and EMGC-1DIN-SUR-150. Please order them from the Catheters and Accessories catalogue.
AO-Neuro 2EMG		<b>2nd EMG Channel for Neuro Module</b> Neuro software 2nd EMG channel for Free running EMG. Guarded EMG cable with DIN-5 plug and 3 leads (180 cm).
AO-Solar EGG		<b>Solar EGG Module (not available in the USA)</b> EGG measuring and analysis software. EGG module with 6 EGG channels, 1 artifact detection channel, EGG cable set, respiration sensor kit (for artifact detection), connection cable, mounting clamp for Solar Trolley, EGG user's manual.
AO-Solar SR		<b>Solar Swallow and Respiration package</b> Additional connectors on CIM for 1 swallow and 1 respiration channel. Respiration sensor kit (Adult). <b>Note:</b> EMG and Swallow cannot be measured simultaneously.
AO-SGP		<b>Solar Gold Trolley package</b> Package to upgrade Solar Silver Trolley to a Solar Gold Trolley, including PC cable cover, 2 blue side shields, printer shelf, 1 extra accessory rail.

# Solar GI LGI H2O, Trolley system (G3-6)

## Add-ons

### Additional packages

Article	Picture	Description
AO-BPM Medlab		Blood Pressure and SpO2 interface software for (Medlab) Vitro, including manual
AO-BPM Nonin		Blood Pressure and SpO2 interface software for (Nonin) Avant 2120, including manual

### Additional hardware

Article	Picture	Description
MPP-A		Air channel set: Tube with splitter, flow resistor 4 ml/min, air filter

### Additional software

Article	Description
SSP-3D	3D Vector Volume Plot
SGI/COLON	Colon manometry Software
SSP-Bio	Biofeedback software
SGI-UES	Upper Esophageal Sphincter software (UES)
SGI-UGI-1	Upper GI software package, including Esophageal Body and Lower Esophageal Sphincter software
SSP-TC	Templates and Comments <ul style="list-style-type: none"><li>• Templates for design of standard letters</li><li>• Additional and Medical Comments</li></ul>
HEM-NST-SW	Neuro software: Sensory Threshold (not available for USA)
NET 600	Network analysis Software for first 2 users

### Manuals

Article	Description
MAN-140	HIS/EMR integration Users & Installation manual
MAN-119	Solar GI Manométrie Manuel d'Utilisation (French)
MAN-048	Solar GI Manometrie Benutzerhandbuch (German)
MAN-047	Solar GI Manometrie Gebruikershandleiding (Dutch)





# HIGH RESOLUTION MANOMETRY SYSTEMS

# Solar GI HRM H<sub>2</sub>O, 24p, Compact Pole system (G3-7)

Compact, cost-effective state-of-the-art High Resolution Manometry (HRM) system offering all of the GI diagnostic tools needed for today's medical professionals performing HR esophageal manometry.

Solar GI HRM H<sub>2</sub>O measures up to 24 pressures.

All Solar modules, laptop and printer are mounted on a moveable pole with small footprint.

System is ready to use single use as well as reusable water perfused catheters.



## System:

- Pole:** Solar Pole IV (ø 38 mm, 85 cm) on wheelbase with 4 double roll wheels and wheel brakes. Accessory rail, Laptop shelf, splash screen, base box for safety module, catheter peg (holder) for catheter.
- Interface Module:** Multi Pressure Interface (MPI) for max. 12 pressure channels with Argon connector. Mounting clamps, cables and power cord EU or US are included.
- Pump:** Electrically powered Solar Manometric Perfusion Pump (MPP Plus) including air compressor, water container and dish. Automatic balloon filling functionality (anorectal manometry) Including: 30 Argon pressure transducers, 24 flow resistors (0.15 ml/min), 10 water filters and tubes.
- U2M:** Solar U2M Main Module with 5 ports
- Remote control:** Infrared remote control RC-1200 (blue)
- English manuals:** Solar GI HRM User's manual, Solar GI Manometry User's manual, Solar GI Service and Installation manual
- Standard included:** Solar Safety set (115V or 230V) Infrared receiver

## Software:

Solar GI software:

- Solar GI Patient database software
- Query Module: Database filter and Query options
- Stationary Upper GI investigation software
- 9 Protocols for each test
- Stationary Upper GI analysis software
- Hardware diagnostic software

Upper GI investigation and analysis software:

- High Resolution Manometry / Clouse Contour Plot software
- HRM Esophageal Measurement and Analysis software
- Esophageal Body software
- Lower Esophageal Sphincter software (LES)

# Solar GI HRM H<sub>2</sub>O, 24p, Compact Pole system (G3-7)

## Add-ons

### Additional packages

Article	Picture	Description
AO-H2O Imp		<p><b>Solar H2O Impedance package</b> Impedance software. CIM-AUX-impedance module for up to 13 impedance rings, connection cable and mounting clamp for rail. Interface cable for reusable HRIM catheter with 22 pressures and 7 impedance channels (CE4-0051). <b>Note</b> : Order interface cable C/intcable02 (catheters and accessories catalogue) if a CE4-0083 catheter (22 Press. &amp; 12 Imp.) is used!</p>
AO-HRAM		<p><b>Solar High Resolution Anorectal Manometry (HRAM) software package</b> Anorectal manometry and HRAM / Clouse Contour Plot Software.</p>
AO-HRAM 360		<p><b>360° High Resolution Anorectal Manometry (HRAM) software package</b> Anorectal manometry and HRAM / Clouse Contour Plot Software. 360 HRAM software. <b>Note</b>: for 360° Upper HRM, order SGI-HRM 360 too.</p>
AO-8CH 0,6 Perfusion et		<p><b>8 Channel 0,6 ml/min. Perfusion set</b> 8 Flow resistors for 0.6 ml/min and 2 four-channel dual flow sets for MPP. Must be used to perform manometry studies with 8 pressure channels.</p>
AO-EMG CIM		<p><b>Solar EMG Module</b> Solar software for EMG 1 channel. CIM module with 1 EMG channel DIN-5, 1 guarded EMG cable with DIN-5 plug and 3 leads (180cm), connection cable and mounting clamp for Solar Trolley.</p>
AO-EMG HS		<p><b>High speed EMG for CIM, 10 kHz.</b> Software to measure and display High speed/frequency EMG signals. <b>Note</b>: Please order AO-EMG CIM too.</p>
AO-Neuro	✓	<p><b>Neuro Module</b> Software for EMG 1 channel and Neuro software for free running EMG, pudendal nerve stimulation (PNS) and motor nerve conduction. High speed/frequency EMG and stimulation module, 1 EMG channel, guarded EMG cable with DIN-5 plug and 3 leads (180 cm), 1 stimulation channel, connection cable and mounting clamp, Solar Neuro user's manual. <b>Note</b>: The following items are required for PNS: C040, G34-831 and EMGC-1DIN-SUR-150. Please order them from the Catheters and Accessories catalogue.</p>
AO-Neuro 2EMG		<p><b>2nd EMG Channel for Neuro Module</b> Neuro software 2nd EMG channel for Free running EMG. Guarded EMG cable with DIN-5 plug and 3 leads (180 cm).</p>
AO-Solar EGG	✓	<p><b>Solar EGG Module (not available in the USA)</b> EGG measuring and analysis software. EGG module with 6 EGG channels, 1 artifact detection channel, EGG cable set, respiration sensor kit (for artifact detection), connection cable, mounting clamp for Solar Trolley, EGG user's manual.</p>
AO-Solar SR		<p><b>Solar Swallow and Respiration package</b> Additional connectors on CIM for 1 swallow and 1 respiration channel. Respiration sensor kit (Adult). <b>Note</b>: EMG and Swallow cannot be measured simultaneously. <b>Note</b>: Please order the "AO-EMG CIM" too.</p>

# Solar GI HRM H<sub>2</sub>O, 24p, Compact Pole system (G3-7)

## Add-ons

### Additional hardware

Article	Picture	Description
AO-BPM Medlab		Blood Pressure and SpO2 interface software for (Medlab) Vitro, including manual
AO-BPM Nonin		Blood Pressure and SpO2 interface software for (Nonin) Avant 2120, including manual
AO-EMG 2C		<b>EMG package with classic EMG cable (EMGC-D5-TP, EMGC-TP-SUR)</b> Software for EMG 1 channel Guarded EMG cable for 3 electrodes with DIN 42802 and DIN-5 connector, 180 cm Guarded EMG cable with press stud and DIN 42802, 30 cm, set of 3
MPP-A		Air channel set: Tube with splitter, flow resistor 4 ml/min, air filter
Mouse Tray	✓	Mouse tray for laptop shelf

### Additional software

Article	Description
SGI-UES	Upper Esophageal Sphincter software (UES)
SGI-HRM 360	360° High Resolution Manometry software package <b>Note:</b> for Upper 360° degrees HRM only. Order AO-HRAM 360 for 360° High Resolution Anorectal Manometry (HRAM), see "Additional Packages"
AO-Oddi	Sphincter of Oddi manometry (Biliary) software and manual
HEM-NST-SW	Neuro software: Sensory Threshold (not available for USA)
NET 600	Network analysis Software for first 2 users
SGI/COLON	Colon manometry Software
SGI/AD	Antro-Duodenal/Small Bowel software <b>Note:</b> including the possibility to display HRM Contour plots for this option
SSP-Bio	Biofeedback software <b>Note:</b> order AO-EMG CIM if you would like to use EMG for Biofeedback, see "Additional Packages"
SSP-Anal	Anorectal manometry software
SSP-3D	3D Vector Volume Plot
SSP-TC	Templates and Comments • Templates for design of standard letters • Additional and Medical Comments

### Manuals

Article	Description
MAN-119	Solar GI Manométrie Manuel d'Utilisation (French)
MAN-048	Solar GI Manometrie Benutzerhandbuch (German)
MAN-047	Solar GI Manometrie Gebruikershandleiding (Dutch)
MAN-116	Solar GI HRM Manuel d'Utilisation (French)
MAN-091	Solar GI HRM Benutzerhandbuch (German)
MAN-090	Solar GI HRM Gebruikershandleiding (Dutch)
MAN-140	HIS/EMR integration Users & Installation manual

# Solar GI HRM H<sub>2</sub>O, 24p, Trolley system (G3-8)

Cost-effective state-of-the-art High Resolution Manometry (HRM) system for today's medical professionals performing HR esophageal manometry.

Solar GI HRM H<sub>2</sub>O measures up to 24 pressures and can be combined with 12 impedance channels, to perform HRIM.

All Solar modules, PC, printer and monitor are integrated in a moveable trolley.

System is ready to use single use as well as reusable water perfused catheters.



## System:

- Trolley:** Solar Gold Trolley with 12 cm wheels and wheel brakes, keyboard shelf, PC cable cover, blue side shields, printer shelf, monitor arm for TFT flat screen, hinging accessory rail on the top of one side of the trolley and a standard accessory rail on the other side of the top of the trolley, catheter peg (holder) for catheter.
- Interface Module:** Multi Pressure Interface (MPI) for 24 pressure channels with Argon connector. Mounting clamps, cables and power cord EU or US are included.
- Pump:** Electrically powered Solar Manometric Perfusion Pump (MPP Plus) including air compressor, water container and dish. Automatic balloon filling functionality (anorectal manometry) Including: 30 Argon pressure transducers, 24 flow resistors (0.15 ml/min), 10 water filters and tubes.
- U2M:** Solar U2M Main Module with 5 ports
- Remote control:** Infrared remote control RC-1500 (white)
- English manuals:** Solar GI HRM User's manual, Solar GI Manometry User's manual, Solar GI Service and Installation manual, MMS Perfusion Pump Maintenance instructions
- Standard included:** Solar Safety set, Q (115V or 230V) Infrared receiver

## Software:

Solar GI software:

- Solar GI Patient database software
- Query Module: Database filter and Query options
- Stationary Upper GI investigation software
- 9 Protocols for each test
- Stationary Upper GI analysis software
- Hardware diagnostic software

Upper GI investigation and analysis software:

- High Resolution Manometry / Clouse Contour Plot software
- HRM Esophageal Measurement and Analysis software
- Esophageal Body software
- Lower Esophageal Sphincter software (LES)

# Solar GI HRM H<sub>2</sub>O, 24p, Trolley system (G3-8)

## Add-ons

### Additional packages

Article	Picture	Description
AO-H2O Imp		<p><b>Impedance software, to create a HRIM system</b>            CIM-AUX-impedance module for up to 13 impedance rings, connection cable and mounting clamp for rail. Interface cable for reusable HRIM catheter with 22 pressures and 7 impedance channels (CE4-0051).  <b>Note</b> : Order interface cable C/intcable02 (catheters and accessories catalogue) if a CE4-0083 catheter (22 Press. &amp; 12 Imp.) is used!</p>
AO-HRM SS		<p><b>Solar HRM Solid State Package</b>            CIM-AUX module with connector for Solid State HRM catheter (max 36 P).</p>
AO-HRAM		<p><b>Solar High Resolution Anorectal Manometry (HRAM) software package</b>            Anorectal manometry and HRAM / Clouse Contour Plot Software.</p>
AO-HRAM 360		<p><b>360° High Resolution Anorectal Manometry (HRAM) software package</b>            Anorectal manometry and HRAM / Clouse Contour Plot Software.            360 HRAM software.            Note: for 360° Upper HRM, order SGI-HRM 360 too.</p>
AO-8CH 0,6 Perfusion Set		<p><b>8 Channel 0,6 ml/min. Perfusion set</b>            8 Flow resistors for 0.6 ml/min and 2 four-channel dual flow sets for MPP.</p>
AO-EMG CIM		<p><b>Solar EMG Module</b>            Solar software for EMG 1 channel. CIM module with 1 EMG channel DIN-5, 1 guarded EMG cable with DIN-5 plug and 3 leads (180cm), connection cable and mounting clamp for Solar Trolley.</p>
AO-EMG HS		<p><b>High speed EMG for CIM, 10 kHz.</b>            Software to measure and display High speed/frequency EMG signals.  <b>Note:</b> Please order AO-EMG CIM too.</p>
AO-Neuro	✓	<p><b>Neuro Module</b>            Software for EMG 1 channel and Neuro software for free running EMG, pudendal nerve stimulation (PNS) and motor nerve conduction.            High speed/frequency EMG and stimulation module, 1 EMG channel, guarded EMG cable with DIN-5 plug and 3 leads (180 cm), 1 stimulation channel, connection cable and mounting clamp, Solar Neuro user's manual.  <b>Note:</b> The following items are required for PNS: C040, G34-831 and EMGC-1DIN-SUR-150.            Please order them from the Catheters and Accessories catalogue.</p>
AO-Neuro 2EMG		<p><b>2nd EMG Channel for Neuro Module</b>            Neuro software 2nd EMG channel for Free running EMG.            Guarded EMG cable with DIN-5 plug and 3 leads (180 cm).</p>
AO-Solar EGG	✓	<p><b>Solar EGG Module (not available in the USA)</b>            EGG measuring and analysis software.            EGG module with 6 EGG channels, 1 artifact detection channel, EGG cable set, respiration sensor kit (for artifact detection), connection cable, mounting clamp for Solar Trolley, EGG user's manual.</p>
AO-Solar SR		<p><b>Solar Swallow and Respiration package</b>            Additional connectors on CIM for 1 swallow and 1 respiration channel.            Respiration sensor kit (Adult).  <b>Note:</b> EMG and Swallow cannot be measured simultaneously.  <b>Note:</b> Please order the AO-EMG CIM too.</p>

# Solar GI HRM H<sub>2</sub>O, 24p, Trolley system (G3-8)

## Add-ons

### Additional hardware

Article	Picture	Description
AO-BPM Medlab		Blood Pressure and SpO2 interface software for (Medlab) Vitro, including manual
AO-BPM Nonin		Blood Pressure and SpO2 interface software for (Nonin) Avant 2120, including manual
AO-EMG 2C		EMG package with classic EMG cable (EMGC-D5-TP, EMGC-TP-SUR) Software for EMG 1 channel Guarded EMG cable for 3 electrodes with DIN 42802 and DIN-5 connector, 180 cm Guarded EMG cable with press stud and DIN 42802, 30 cm, set of 3
MPP-A		Air channel set: Tube with splitter, flow resistor 4 ml/min, air filter

### Additional software

Article	Description
SIG-UES	Upper Esophageal Sphincter software (UES)
SIG-HRM 360	360° High Resolution Manometry software package <b>Note:</b> for Upper 360° degrees HRM only. Order AO-HRAM 360 for 360° High Resolution Anorectal Manometry (HRAM), see "Additional Packages"
AO-Oddi	Sphincter of Oddi manometry (Biliary) software and manual
HEM-NST-SW	Neuro software: Sensory Threshold (not available for USA)
NET 600	Network analysis Software for first 2 users
SIG/COLON	Colon manometry Software <b>Note:</b> including the possibility to display HRM Contour plots for this option
SIG/AD	Antro-Duodenal/Small Bowel software <b>Note:</b> including the possibility to display HRM Contour plots for this option
SSP-Bio	Biofeedback software <b>Note:</b> order AO-EMG CIM if you would like to use EMG for Biofeedback, see "Additional Packages"
SSP-Anal	Anorectal manometry software
SSP-3D	3D Vector Volume Plot
SSP-TC	Templates and Comments <ul style="list-style-type: none"> <li>• Templates for design of standard letters</li> <li>• Additional and Medical Comments</li> </ul>



### Manuals

Article	Description
MAN-119	Solar GI Manométrie Manuel d'Utilisation (French)
MAN-048	Solar GI Manometrie Benutzerhandbuch (German)
MAN-047	Solar GI Manometrie Gebruikershandleiding (Dutch)
MAN-116	Solar GI HRM Manuel d'Utilisation (French)
MAN-091	Solar GI HRM Benutzerhandbuch (German)
MAN-090	Solar GI HRM Gebruikershandleiding (Dutch)
MAN-140	HIS/EMR integration Users & Installation manual

# Solar GI HRM H<sub>2</sub>O, 36p, Trolley system (G3-12)

Cost-effective state-of-the-art High Resolution Manometry (HRM) system for today's medical professionals performing HR esophageal manometry.

Solar GI HRM H<sub>2</sub>O measures up to 36 pressures and can be combined with 12 impedance channels, to perform HRIM.

All Solar modules, PC, printer and monitor are integrated in a moveable trolley.

System is ready to use single use as well as reusable water perfused catheters.



## System:

- Trolley:** Solar Gold Trolley with 12 cm wheels and wheel brakes, keyboard shelf, PC cable cover, blue side shields, printer shelf, monitor arm for TFT flat screen, hinging accessory rail on the top of one side of the trolley and a standard accessory rail on the other side of the top of the trolley, catheter peg (holder) for catheter.
- Interface Module:** Multi Pressure Interface (MPI) for 36 pressure channels with Argon connector. Mounting clamps, cables and power cord EU or US are included.
- Pump:** Electrically powered Solar Manometric Perfusion Pump (MPP Plus) including air compressor, water container and dish. Automatic balloon filling functionality (anorectal manometry) Including: 40 Argon pressure transducers, 40 flow resistors (0.15 ml/min), 10 water filters and tubes.
- U2M:** Solar U2M Main Module with 5 ports
- Remote control:** Infrared remote control RC-1500 (white)
- English manuals:** Solar GI HRM User's manual, Solar GI Manometry User's manual, Solar GI Service and Installation manual, MMS Perfusion Pump Maintenance instructions
- Standard included:** Solar Safety set, Q (115V or 230V)  
Infrared receiver

## Software:

Solar GI software:

- Solar GI Patient database software
- Query Module: Database filter and Query options
- Stationary Upper GI investigation software
- 9 Protocols for each test
- Stationary Upper GI analysis software
- Hardware diagnostic software

Upper GI investigation and analysis software:

- High Resolution Manometry / Clouse Contour Plot software
- HRM Esophageal Measurement and Analysis software
- Esophageal Body software
- Lower Esophageal Sphincter software (LES)

# Solar GI HRM H<sub>2</sub>O, 36p, Trolley system (G3-12)

## Add-ons

### Additional packages

Article	Picture	Description
AO-H2O Imp		<b>Solar H2O Impedance package</b> Impedance software, to create a HRIM system CIM-AUX-impedance module for up to 13 impedance rings, connection cable and mounting clamp for rail. Interface cable for reusable HRIM catheter with 22 pressures and 7 impedance channels (CE4-0051). <b>Note:</b> Order interface cable C/intcable02 (catheters and accessories catalogue) if a CE4-0083 catheter (22 Press. & 12 Imp.) is used!
AO-HRM SS		<b>Solar HRM Solid State Package</b> CIM-AUX module with connector for Solid State HRM catheter (max 36 P).
AO-HRAM		<b>Solar High Resolution Anorectal Manometry (HRAM) software package</b> Anorectal manometry and HRAM / Clouse Contour Plot Software.
AO-HRAM 360		<b>360° High Resolution Anorectal Manometry (HRAM) software package</b> Anorectal manometry and HRAM / Clouse Contour Plot Software. 360 HRAM software. <b>Note:</b> for 360° Upper HRM, order SGI-HRM 360 too.
AO-8CH 0,6 Perfusion Set		<b>8 Channel 0,6 ml/min. Perfusion set</b> 8 Flow resistors for 0.6 ml/min and 2 four-channel dual flow sets for MPP.
AO-EMG CIM		<b>Solar EMG Module</b> Solar software for EMG 1 channel. CIM module with 1 EMG channel DIN-5, 1 guarded EMG cable with DIN-5 plug and 3 leads (180cm), connection cable and mounting clamp for Solar Trolley.
AO-EMG HS		<b>High speed EMG for CIM, 10 kHz.</b> Software to measure and display High speed/frequency EMG signals. <b>Note:</b> Please order AO-EMG CIM too.
AO-Neuro	✓	<b>Neuro Module</b> Software for EMG 1 channel and Neuro software for free running EMG, pudendal nerve stimulation (PNS) and motor nerve conduction. High speed/frequency EMG and stimulation module, 1 EMG channel, guarded EMG cable with DIN-5 plug and 3 leads (180 cm), 1 stimulation channel, connection cable and mounting clamp, Solar Neuro user's manual. <b>Note:</b> The following items are required for PNS: C040, G34-831 and EMGC-1DIN-SUR-150. Please order them from the Catheters and Accessories catalogue.
AO-Neuro 2EMG		<b>2nd EMG Channel for Neuro Module</b> Neuro software 2nd EMG channel for Free running EMG. Guarded EMG cable with DIN-5 plug and 3 leads (180 cm).
AO-Solar EGG	✓	<b>Solar EGG Module (not available in the USA)</b> EGG measuring and analysis software. EGG module with 6 EGG channels, 1 artifact detection channel, EGG cable set, respiration sensor kit (for artifact detection), connection cable, mounting clamp for Solar Trolley, EGG user's manual.
AO-Solar SR		<b>Solar Swallow and Respiration package</b> Additional connectors on CIM for 1 swallow and 1 respiration channel. Respiration sensor kit (Adult). <b>Note:</b> EMG and Swallow cannot be measured simultaneously. <b>Note:</b> Please order the AO-EMG CIM too.

# Solar GI HRM H<sub>2</sub>O, 36p, Trolley system (G3-12)

## Add-ons

### Additional packages

Article	Picture	Description
AO-BPM Medlab		Blood Pressure and SpO2 interface software for (Medlab) Vitro, including manual
AO-BPM Nonin		Blood Pressure and SpO2 interface software for (Nonin) Avant 2120, including manual
AO-EMG 2C		EMG package with classic EMG cable (EMGC-D5-TP, EMGC-TP-SUR) Software for EMG 1 channel Guarded EMG cable for 3 electrodes with DIN 42802 and DIN-5 connector, 180 cm Guarded EMG cable with press stud and DIN 42802, 30 cm, set of 3

### Additional hardware

Article	Picture	Description
MPP-A		Air channel set: Tube with splitter, flow resistor 4 ml/min, air filter

### Additional software

Article	Description
SGI-UES	Upper Esophageal Sphincter software (UES)
SGI-HRM 360	360° High Resolution Manometry software package <b>Note:</b> for Upper 360° degrees HRM only. Order AO-HRAM 360 for 360° High Resolution Anorectal Manometry (HRAM), see "Additional Packages"
AO-Oddi	Sphincter of Oddi manometry (Biliary) software and manual
HEM-NST-SW	Neuro software: Sensory Threshold (not available for USA)
NET 600	Network analysis Software for first 2 users
SGI/COLON	Colon manometry Software
SGI/AD	Antro-Duodenal/Small Bowel software <b>Note:</b> including the possibility to display HRM Contour plots for this option
SSP-Bio	Biofeedback software <b>Note:</b> order AO-EMG CIM if you would like to use EMG for Biofeedback, see "Additional Packages"
SSP-Anal	Anorectal manometry software
SSP-3D	3D Vector Volume Plot
SSP-TC	Templates and Comments • Templates for design of standard letters • Additional and Medical Comments

## Manuals

Article	Description
MAN-119	Solar GI Manométrie Manuel d'Utilisation (French)
MAN-048	Solar GI Manometrie Benutzerhandbuch (German)
MAN-047	Solar GI Manometrie Gebruikershandleiding (Dutch)
MAN-116	Solar GI HRM Manuel d'Utilisation (French)
MAN-091	Solar GI HRM Benutzerhandbuch (German)
MAN-090	Solar GI HRM Gebruikershandleiding (Dutch)
MAN-140	HIS/EMR integration Users & Installation manual

# Solar GI HRM Solid State, Trolley system (G3-9)

State-of-the-art High Resolution Manometry (HRM) system for today's medical professionals performing HR esophageal manometry.

Solar GI HRM Solid State measures up to 36 pressures.

All Solar modules, PC, printer and monitor are integrated in a moveable trolley.

System is ready to use reusable solid state (microtip) catheters.



## System:

- Trolley:** Solar Gold Trolley with 12 cm wheels and wheel brakes, keyboard shelf, PC cable cover, blue side shields, printer shelf, monitor arm for TFT flat screen, accessory rail on the top of both sides of the trolley.
- Interface Module:** Solar Combination Interface Module (CIM-AUX HRIM) for High-Resolution (Impedance) Manometry, for 36 channel pressure measurement including interface cable for UniTip HR(I)M catheter. Mounting clamps, cables and power cord EU or US are included.
- U2M:** Solar U2M Main Module with 5 ports
- Remote control:** Infrared remote control RC-1500 (white)
- English manuals:** Solar GI HRM User's manual, Solar GI Manometry User's manual, Solar GI Service and Installation manual
- Standard included:** Solar Safety set, Q (115V or 230V)  
Infrared receiver

## Software:

Solar GI software:

- Solar GI Patient database software
- Query Module: Database filter and Query options
- Stationary Upper GI investigation software
- 9 Protocols for each test
- Stationary Upper GI analysis software
- Hardware diagnostic software

Upper GI investigation and analysis software:

- High Resolution Manometry / Clouse Contour Plot software
- HRM Esophageal Measurement and Analysis software
- Esophageal Body software
- Lower Esophageal Sphincter software (LES)

# Solar GI HRM Solid State, Trolley system (G3-9)

## Add-ons

### Additional packages

Article	Picture	Description
AO-HRAM		<b>Solar High Resolution Anorectal Manometry (HRAM) software package</b> Anorectal manometry and HRAM / Clouse Contour Plot Software.
AO-HRAM 360		<b>360° High Resolution Anorectal Manometry (HRAM) software package</b> Anorectal manometry and HRAM / Clouse Contour Plot Software. 360 HRAM software. <b>Note:</b> for 360° Upper HRM, order SGI-HRM 360 too.
AO-EMG CIM		<b>Solar EMG Module</b> Solar software for EMG 1 channel. CIM module with 1 EMG channel DIN-5, 1 guarded EMG cable with DIN-5 plug and 3 leads (180cm), connection cable and mounting clamp for Solar Trolley.
AO-EMG HS		<b>High speed EMG for CIM, 10 kHz.</b> Software to measure and display High speed/frequency EMG signals. <b>Note:</b> Please order AO-EMG CIM too.
AO-Neuro	✓	<b>Neuro Module</b> Software for EMG 1 channel and Neuro software for free running EMG, pudendal nerve stimulation (PNS) and motor nerve conduction. High speed/frequency EMG and stimulation module, 1 EMG channel, guarded EMG cable with DIN-5 plug and 3 leads (180 cm), 1 stimulation channel, connection cable and mounting clamp, Solar Neuro user's manual. <b>Note:</b> The following items are required for PNS: C040, G34-831 and EMGC-1DIN-SUR-150. Please order them from the Catheters and Accessories catalogue.
AO-Neuro 2EMG		<b>2nd EMG Channel for Neuro Module</b> Neuro software 2nd EMG channel for Free running EMG. Guarded EMG cable with DIN-5 plug and 3 leads (180 cm).
AO-Solar EGG	✓	<b>Solar EGG Module (not available in the USA)</b> EGG measuring and analysis software. EGG module with 6 EGG channels, 1 artifact detection channel, EGG cable set, respiration sensor kit (for artifact detection), connection cable, mounting clamp for Solar Trolley, EGG user's manual.
AO-Solar SR		<b>Solar Swallow and Respiration package</b> Additional connectors on CIM for 1 swallow and 1 respiration channel. Respiration sensor kit (Adult). <b>Note:</b> EMG and Swallow cannot be measured simultaneously. <b>Note:</b> Please order the AO-EMG CIM too.
AO-BPM Medlab		<b>Blood Pressure and SpO2 interface software for (Medlab) Vitro, including manual</b>
AO-BPM Nonin		<b>Blood Pressure and SpO2 interface software for (Nonin) Avant 2120, including manual</b>
AO-EMG 2C		<b>EMG package with classic EMG cable (EMGC-D5-TP, EMGC-TP-SUR)</b> Software for EMG 1 channel Guarded EMG cable for 3 electrodes with DIN 42802 and DIN-5 connector, 180 cm Guarded EMG cable with press stud and DIN 42802, 30 cm, set of 3

### Additional software

Article	Description
SGI-UES	Upper Esophageal Sphincter software (UES)
SGI-HRM 360	360° High Resolution Manometry software package <b>Note:</b> For Upper 360° degrees HRM only. Order AO-HRAM 360 for 360° High Resolution Anorectal Manometry (HRAM), see "Additional Packages"
AO-Oddi	Sphincter of Oddi manometry (Biliary) software and manual
HEM-NST-SW	Neuro software: Sensory Threshold (not available for USA)
NET 600	Network analysis Software for first 2 users
SGI/COLON	Colon manometry Software <b>Note:</b> including the possibility to display HRM Contour plots for this option
SGI/AD	Antro-Duodenal/Small Bowel software <b>Note:</b> including the possibility to display HRM Contour plots for this option
SSP-Bio	Biofeedback software <b>Note:</b> order AO-EMG CIM if you would like to use EMG for Biofeedback, see "Additional Packages"
SSP-Anal	Anorectal manometry software
SSP-3D	3D Vector Volume Plot
SSP-TC	Templates and Comments <ul style="list-style-type: none"> <li>• Templates for design of standard letters</li> <li>• Additional and Medical Comments</li> </ul>



### Manuals

Article	Description
MAN-119	Solar GI Manométrie Manuel d'Utilisation (French)
MAN-048	Solar GI Manometrie Benutzerhandbuch (German)
MAN-047	Solar GI Manometrie Gebruikershandleiding (Dutch)
MAN-116	Solar GI HRM Manuel d'Utilisation (French)
MAN-091	Solar GI HRM Benutzerhandbuch (German)
MAN-090	Solar GI HRM Gebruikershandleiding (Dutch)
MAN-140	HIS/EMR integration Users & Installation manual

# Solar GI HRIM Solid State, Trolley system (G3-10)

State-of-the-art High Resolution Impedance Manometry (HRIM) system for today's medical professionals performing HR esophageal manometry with Impedance.

Solar GI HRIM Solid State measures up to 36 pressures and 16 Impedance channels simultaneously.

All Solar modules, PC, printer and monitor are integrated in a moveable trolley.

System is ready to use reusable solid state (microtip) catheters.



## System:

- Trolley:** Solar Gold Trolley with 12 cm wheels and wheel brakes, keyboard shelf, PC cable cover, blue side shields, printer shelf, monitor arm for TFT flat screen, accessory rail on the top of both sides of the trolley.
- Interface Module:** Solar Combination Interface Module (CIM-AUX HRIM) for High-Resolution Manometry combined with Impedance for 36 pressure channels and 16 impedance channels including interface cable for UniTip HRIM catheter. Mounting clamps, cables and power cord EU or US are included.
- U2M:** Solar U2M Main Module with 5 ports
- Remote control:** Infrared remote control RC-1500 (white)
- English manuals:** Solar GI HRM User's manual, Solar GI Manometry User's manual, Solar GI Service and Installation manual
- Standard included:** Solar Safety set, Q (115V or 230V)  
Infrared receiver

## Software:

Solar GI software:

- Solar GI Patient database software
- Query Module: Database filter and Query options
- Stationary Upper GI investigation software
- 9 Protocols for each test
- Stationary Upper GI analysis software
- Hardware diagnostic software

Upper GI investigation and analysis software:

- High Resolution Manometry / Clouse Contour Plot software
- HRM Esophageal Measurement and Analysis software
- Esophageal Body software
- Lower Esophageal Sphincter software (LES)
- Impedance software

# Solar GI HRIM Solid State, Trolley system (G3-10)

## Add-ons

### Additional packages

Article	Picture	Description
AO-HRAM		<b>Solar High Resolution Anorectal Manometry (HRAM) software package</b> Anorectal manometry and HRAM / Clouse Contour Plot Software.
AO-HRAM 360		<b>360° High Resolution Anorectal Manometry (HRAM) software package</b> Anorectal manometry and HRAM / Clouse Contour Plot Software. 360 HRAM software. <b>Note:</b> for 360° Upper HRM, order SGI-HRM 360 too.
AO-EMG CIM		<b>Solar EMG Module</b> Solar software for EMG 1 channel. CIM module with 1 EMG channel DIN-5, 1 guarded EMG cable with DIN-5 plug and 3 leads (180cm), connection cable and mounting clamp for Solar Trolley.
AO-EMG HS		<b>High speed EMG for CIM, 10 kHz.</b> Software to measure and display High speed/frequency EMG signals. <b>Note:</b> Please order AO-EMG CIM too.
AO-Neuro	✓	<b>Neuro Module</b> Software for EMG 1 channel and Neuro software for free running EMG, pudendal nerve stimulation (PNS) and motor nerve conduction. High speed/frequency EMG and stimulation module, 1 EMG channel, guarded EMG cable with DIN-5 plug and 3 leads (180 cm), 1 stimulation channel, connection cable and mounting clamp, Solar Neuro user's manual. <b>Note:</b> The following items are required for PNS: C040, G34-831 and EMGC-1DIN-SUR-150. Please order them from the Catheters and Accessories catalogue.
AO-Neuro 2EMG		<b>2nd EMG Channel for Neuro Module</b> Neuro software 2nd EMG channel for Free running EMG. Guarded EMG cable with DIN-5 plug and 3 leads (180 cm).
AO-Solar EGG	✓	<b>Solar EGG Module (not available in the USA)</b> EGG measuring and analysis software. EGG module with 6 EGG channels, 1 artifact detection channel, EGG cable set, respiration sensor kit (for artifact detection), connection cable, mounting clamp for Solar Trolley, EGG user's manual.
AO-Solar SR		<b>Solar Swallow and Respiration package</b> Additional connectors on CIM for 1 swallow and 1 respiration channel. Respiration sensor kit (Adult). <b>Note:</b> EMG and Swallow cannot be measured simultaneously. <b>Note:</b> Please order the AO-EMG CIM too.
AO-BPM Medlab		<b>Blood Pressure and SpO2 interface software for (Medlab) Vitro, including manual</b>
AO-BPM Nonin		<b>Blood Pressure and SpO2 interface software for (Nonin) Avant 2120, including manual</b>
AO-EMG 2C		<b>EMG package with classic EMG cable (EMGC-D5-TP, EMGC-TP-SUR)</b> Software for EMG 1 channel Guarded EMG cable for 3 electrodes with DIN 42802 and DIN-5 connector, 180 cm Guarded EMG cable with press stud and DIN 42802, 30 cm, set of 3

### Additional software

Article	Description
SGI-UES	Upper Esophageal Sphincter software (UES)
SGI-HRM 360	360° High Resolution Manometry software package <b>Note:</b> for Upper 360° degrees HRM only. Order AO-HRAM 360 for 360° High Resolution Anorectal Manometry (HRAM), see "Additional Packages"
AO-Oddi	Sphincter of Oddi manometry (Biliary) software and manual
HEM-NST-SW	Neuro software: Sensory Threshold (not available for USA)
NET 600	Network analysis Software for first 2 users
SGI/COLON	Colon manometry Software <b>Note:</b> including the possibility to display HRM Contour plots for this option
SGI/AD	Antro-Duodenal/Small Bowel software <b>Note:</b> including the possibility to display HRM Contour plots for this option
SSP-Bio	Biofeedback software <b>Note:</b> order AO-EMG CIM if you would like to use EMG for Biofeedback, see "Additional Packages"
SSP-Anal	Anorectal manometry software
SSP-3D	3D Vector Volume Plot
SSP-TC	Templates and Comments <ul style="list-style-type: none"> <li>• Templates for design of standard letters</li> <li>• Additional and Medical Comments</li> </ul>

### Manuals

Article	Description
MAN-119	Solar GI Manométrie Manuel d'Utilisation (French)
MAN-048	Solar GI Manometrie Benutzerhandbuch (German)
MAN-047	Solar GI Manometrie Gebruikershandleiding (Dutch)
MAN-116	Solar GI HRM Manuel d'Utilisation (French)
MAN-091	Solar GI HRM Benutzerhandbuch (German)
MAN-090	Solar GI HRM Gebruikershandleiding (Dutch)
MAN-140	HIS/EMR integration Users & Installation manual



# HIGH RESOLUTION ANORECTAL MANOMETRY SYSTEMS

# Solar GI HRAM H<sub>2</sub>O, 24p, Trolley system (G3-14)

Cost-effective state-of-the-art High Resolution Anorectal Manometry (HRAM) system for today's medical professionals performing HR anorectal manometry.

Solar GI HRAM H<sub>2</sub>O measures up to 24 pressures.

All Solar modules, PC, printer and monitor are integrated in a moveable trolley.

System is ready to use single use as well as reusable water perfused catheters.



## System:

- Trolley:** Solar Gold Trolley with 12 cm wheels and wheel brakes, keyboard shelf, PC cable cover, blue side shields, printer shelf, monitor arm for TFT flat screen, hinging accessory rail on the top of one side of the trolley and a standard accessory rail on the other side of the top of the trolley, catheter peg (holder) for catheter.
- Interface Module:** Multi Pressure Interface (MPI) for 24 pressure channels with Argon connector. Mounting clamps, cables and power cord EU or US are included.
- Pump:** Electrically powered Solar Manometric Perfusion Pump (MPP Plus) including air compressor, water container and dish. Automatic balloon filling functionality (anorectal manometry). Including: 30 Argon pressure transducers, 24 flow resistors (0.15 ml/min), 10 water filters and tubes.
- U2M:** Solar U2M Main Module with 5 ports
- Remote control:** Infrared remote control RC-1500 (white)
- English manuals:** Solar GI HRM User's manual, Solar GI Manometry User's manual, Solar GI Service and Installation manual, MMS Perfusion Pump Maintenance instructions
- Standard included:** Solar Safety set, Q (115V or 230V)  
Infrared receiver

## Software:

Solar GI software:

- Solar GI Patient database software
- Query Module: Database filter and Query options
- Stationary Lower GI investigation software
- 9 Protocols for each test
- Stationary Lower GI analysis software
- Hardware diagnostic software

Lower GI investigation and analysis software:

- Anorectal manometry software including Resting, Squeeze, Endurance squeeze, Push, Cough, RAIR, Sensation Analysis
- Anorectal High Resolution Manometry (HRAM) / Clouse

Contour Plot software including:

- HRAM Measurement and Analysis software



# Solar GI HRAM H<sub>2</sub>O, 24p, Trolley system (G3-14)

## Add-ons

### Additional packages

Article	Picture	Description
AO-8CH 0,6 Perfusion Set		<b>8 Channel 0,6 ml/min. Perfusion set</b> 8 Flow resistors for 0.6 ml/min and 2 four-channel dual flow sets for MPP.
AO-EMG CIM		<b>Solar EMG Module</b> Solar software for EMG 1 channel. CIM module with 1 EMG channel DIN-5, 1 guarded EMG cable with DIN-5 plug and 3 leads (180cm), connection cable and mounting clamp for Solar Trolley.
AO-EMG HS		<b>High speed EMG for CIM, 10 kHz.</b> Software to measure and display High speed/frequency EMG signals. <b>Note:</b> Please order AO-EMG CIM too.
AO-Neuro	✓	<b>Neuro Module</b> Software for EMG 1 channel and Neuro software for free running EMG, pudendal nerve stimulation (PNS) and motor nerve conduction. High speed/frequency EMG and stimulation module, 1 EMG channel, guarded EMG cable with DIN-5 plug and 3 leads (180 cm), 1 stimulation channel, connection cable and mounting clamp, Solar Neuro user's manual. <b>Note:</b> The following items are required for PNS: C040, G34-831 and EMGC-1DIN-SUR-150. Please order them from the Catheters and Accessories catalogue.
AO-Neuro 2EMG		<b>2nd EMG Channel for Neuro Module</b> Neuro software 2nd EMG channel for Free running EMG. Guarded EMG cable with DIN-5 plug and 3 leads (180 cm).
AO-EMG 2C		<b>EMG package with classic EMG cable (EMGC-D5-TP, EMGC-TP-SUR)</b> Software for EMG 1 channel Guarded EMG cable for 3 electrodes with DIN 42802 and DIN-5 connector, 180 cm Guarded EMG cable with press stud and DIN 42802, 30 cm, set of 3
AO-HRM SS		<b>Solar HRM Solid State Package</b> CIM-AUX module with connector for Solid State HRM catheter (max 36 P).
AO-Solar EGG	✓	<b>Solar EGG Module (not available in the USA)</b> EGG measuring and analysis software. EGG module with 6 EGG channels, 1 artifact detection channel, EGG cable set, respiration sensor kit (for artifact detection), connection cable, mounting clamp for Solar Trolley, EGG user's manual.
AO-Solar SR		<b>Solar Swallow and Respiration package</b> Additional connectors on CIM for 1 swallow and 1 respiration channel. Respiration sensor kit (Adult). <b>Note:</b> EMG and Swallow cannot be measured simultaneously. <b>Note:</b> Please order the AO-EMG CIM too.
AO-BPM Medlab		Blood Pressure and SpO <sub>2</sub> interface software for (Medlab) Vitro, including manual
AO-BPM Nonin		Blood Pressure and SpO <sub>2</sub> interface software for (Nonin) Avant 2120, including manual

### Additional hardware

Article	Picture	Description
MPP-A		Air channel set: Tube with splitter, flow resistor 4 ml/min, air filter

### Additional software

Article	Description
SGI-HRAM 360	360° High Resolution Anorectal Manometry (HRAM) software
SGI/COLON	Colon manometry software <b>Note:</b> including the possibility to display HRM Contour plots for this option
SSP-Bio	Biofeedback software <b>Note:</b> order AO-EMG CIM if you would like to use EMG for Biofeedback, see "Additional Packages"
SSP-TC	Templates and Comments <ul style="list-style-type: none"><li>• Templates for design of standard letters</li><li>• Additional and Medical Comments</li></ul>
SSP-3D	3D Vector Volume Plot
HEM-NST-SW	Neuro software: Sensory Threshold (not available for USA)
NET 600	Network analysis Software for first 2 users

## Manuals

Article	Description
MAN-119	Solar GI Manométrie Manuel d'Utilisation (French)
MAN-048	Solar GI Manometrie Benutzerhandbuch (German)
MAN-047	Solar GI Manometrie Gebruikershandleiding (Dutch)
MAN-116	Solar GI HRM Manuel d'Utilisation (French)
MAN-091	Solar GI HRM Benutzerhandbuch (German)
MAN-090	Solar GI HRM Gebruikershandleiding (Dutch)
MAN-140	HIS/EMR integration Users & Installation manual

# Solar GI HRAM Solid State, Trolley System (G3-15)

State-of-the-art High Resolution Anorectal Manometry (HRAM) system for today's medical professionals performing HR anorectal manometry.

Solar GI HRAM Solid State measures up to 36 pressures.

All Solar modules, PC, printer and monitor are integrated in a moveable trolley.

System is ready to use reusable solid state (microtip) catheters.



## System:

- Trolley:** Solar Gold Trolley with 12 cm wheels and wheel brakes, keyboard shelf, PC cable cover, blue side shields, printer shelf, monitor arm for TFT flat screen, accessory rail on the top of both sides of the trolley.
- Interface Module:** Solar Combination Interface Module (CIM-AUX HRIM) for High-Resolution Anorectal Manometry, for 36 channel pressure measurement including interface cable for UniTip HRAM catheter.  
Mounting clamps, cables and power cord EU or US are included.
- U2M:** Solar U2M Main Module with 5 ports
- Remote control:** Infrared remote control RC-1500 (white)
- English manuals:** Solar GI HRM User's manual, Solar GI Manometry User's manual, Solar GI Service and Installation manual
- Standard included:** Solar Safety set, Q (115V or 230V)  
Infrared receiver

## Software:

Solar GI software:

- Solar GI Patient database software
- Query Module: Database filter and Query options
- Stationary Lower GI investigation software
- 9 Protocols for each test
- Stationary Lower GI analysis software
- Hardware diagnostic software

Lower GI investigation and analysis software:

- Anorectal manometry software including: Resting, Squeeze, Endurance squeeze, Push, Cough, RAIR, Sensation analysis
- Anorectal High Resolution Manometry (HRAM) / Clouse Contour Plot software including: HRAM Measurement and Analysis software

# Solar GI HRAM Solid State, Trolley System (G3-15)

## Add-ons

### Additional packages

Article	Picture	Description
AO-EMG CIM		<b>Solar EMG Module</b> Solar software for EMG 1 channel. CIM module with 1 EMG channel DIN-5, 1 guarded EMG cable with DIN-5 plug and 3 leads (180cm), connection cable and mounting clamp for Solar Trolley.
AO-EMG HS		<b>High speed EMG for CIM, 10 kHz.</b> Software to measure and display High speed/frequency EMG signals. <b>Note:</b> Please order AO-EMG CIM too.
AO-Neuro	✓	<b>Neuro Module</b> Software for EMG 1 channel and Neuro software for free running EMG, pudendal nerve stimulation (PNS) and motor nerve conduction. High speed/frequency EMG and stimulation module, 1 EMG channel, guarded EMG cable with DIN-5 plug and 3 leads (180 cm), 1 stimulation channel, connection cable and mounting clamp, Solar Neuro user's manual. <b>Note:</b> The following items are required for PNS: C040, G34-831 and EMGC-1DIN-SUR-150. Please order them from the Catheters and Accessories catalogue.
AO-Neuro 2EMG		<b>2nd EMG Channel for Neuro Module</b> Neuro software 2nd EMG channel for Free running EMG. Guarded EMG cable with DIN-5 plug and 3 leads (180 cm).
AO-EMG 2C		<b>EMG package with classic EMG cable (EMGC-D5-TP, EMGC-TP-SUR)</b> Software for EMG 1 channel Guarded EMG cable for 3 electrodes with DIN 42802 and DIN-5 connector, 180 cm Guarded EMG cable with press stud and DIN 42802, 30 cm, set of 3
AO-Solar EGG	✓	<b>Solar EGG Module (not available in the USA)</b> EGG measuring and analysis software. EGG module with 6 EGG channels, 1 artifact detection channel, EGG cable set, respiration sensor kit (for artifact detection), connection cable, mounting clamp for Solar Trolley, EGG user's manual.
AO-Solar SR		<b>Solar Swallow and Respiration package</b> Additional connectors on CIM for 1 swallow and 1 respiration channel. Respiration sensor kit (Adult). <b>Note:</b> EMG and Swallow cannot be measured simultaneously. <b>Note:</b> Please order the AO-EMG CIM too.
AO-BPM Medlab		<b>Blood Pressure and SpO2 interface software for (Medlab) Vitro, including manual</b>
AO-BPM Nonin		<b>Blood Pressure and SpO2 interface software for (Nonin) Avant 2120, including manual</b>

# Solar GI HRAM Solid State, Trolley System (G3-15)

## Add-ons

### Additional software

Article	Description
SIGI-HRAM 360	360° High Resolution Anorectal Manometry (HRAM) software
SIGI/COLON	Colon manometry software <b>Note:</b> including the possibility to display HRM Contour plots for this option
SSP-Bio	Biofeedback software <b>Note:</b> order AO-EMG CIM if you would like to use EMG for Biofeedback, see "Additional Packages"
SSP-TC	Templates and Comments <ul style="list-style-type: none"><li>• Templates for design of standard letters</li><li>• Additional and Medical Comments</li></ul>
SSP-3D	3D Vector Volume Plot
HEM-NST-SW	Neuro software: Sensory Threshold (not available for USA)
NET 600	Network analysis Software for first 2 users

### Manuals

Article	Description
MAN-119	Solar GI Manométrie Manuel d'Utilisation (French)
MAN-048	Solar GI Manometrie Benutzerhandbuch (German)
MAN-047	Solar GI Manometrie Gebruikershandleiding (Dutch)
MAN-116	Solar GI HRM Manuel d'Utilisation (French)
MAN-091	Solar GI HRM Benutzerhandbuch (German)
MAN-090	Solar GI HRM Gebruikershandleiding (Dutch)
MAN-140	HIS/EMR integration Users & Installation manual



# Accessories GI Motility & Reflux Management

## Trolley accessories:

FPMA-D200-B Trolley Cover	Monitor arm for TFT flat screen on Solar trolley Cover for trolley
------------------------------	---

## Infusion poles:

IV Pole Silver	Infusion pole for Solar Silver including: 4 hooks, mounting clamps and 1 extra accessory rail
----------------	---

## Accessory rails:

SAR-55	Solar accessory rail including locking screw, length 55 cm
SAR-70	Solar accessory rail including locking screw, length 70 cm

## Accessories to mount on Solar accessory rail:

10 10 075	Pump tube holder with clamp
10 10 078	Dish including holder with rail clamp
10 10 080	Journal, paper holder with clamp
10 10 679	Cable holder with clamp
10 10 958	Glove box holder with clamp (20x13.4x9 cm)
10 10 977	Basket for catheters, pump tubes, EMG electrodes etc. with clamp (16x16x16 cm)

## Mounting clamps:

SSC-2	Solar Clamp for a round pole, 20-40 mm
SSC-3	Solar Clamp with locking screw for accessory rail (for Pump or CIM)
SSC-4	Solar Clamp without locking screw for accessory rail
SSC-21	Hinging accessory rail including 2 Solar clamps
SSC-CP	Catheter peg (holder) for GI water perfused catheters

## MMS bus cabling:

SDC-0.3	MMS bus cable, 30 cm
SDC-0.6	MMS bus cable, 60 cm
SDC-1.6	MMS bus cable, 1.6 meter
SDC-4	MMS bus cable, 4 meter

## Power cabling:

PC-NL	Power cable Netherlands
PC-UK	Power cable UK

## Safety sets:

Safety set 115V Q	Solar safety set, with extra quiet safety module and USA power cord
Safety Set 230V Q	Solar safety set, with extra quiet safety module and EURO power cord



# Accessories GI Motility & Reflux Management

## Accessories for Wireless Catheter Puller:

S-Puller-BTGL40	Catheter Puller 40 cm guider
S-Puller-BTSL40	Catheter Puller 40 cm slider

## Batteries:

Battery-AA-R	Battery for wireless Catheter Puller, Rechargeable NiMH, AA (set of 4)
Battery-CR2025	Battery for remote control type RC 1200 (set of 5)

## Paint for Solar Trolley and S Pole III:

PAINT 5014	RAL 5014 touch-up paint (blue)
PAINT 7035	RAL 7035 touch-up paint (grey)

## Accessories for S Pole III / IV:

SSC-H	2 hooks for water bag / pressure cuff
-------	---------------------------------------

# Accessories GI Motility & Reflux Management

Article code	Description	G2-3	G2-1	G3-3	G3-5	G3-6	G3-7	G3-8	G3-12	G3-14	G3-9	G3-10	G3-15
10 10 075	Pump tube holder with clamp				x	x		x	x	x	x	x	x
10 10 078	Dish including holder with rail clamp				x	x		x	x	x	x	x	x
10 10 080	Journal, paper holder with clamp				x	x		x	x	x	x	x	x
10 10 679	Cable holder with clamp				x	x	x	x	x	x	x	x	x
10 10 958	Glove box holder with clamp, 20x13.4x9 cm				x	x		x	x	x	x	x	x
10 10 977	Basket for catheters, pump tubes, EMG electrodes etc. with clamp, 16x16x16 cm				x	x	x	x	x	x	x	x	x
Battery-AA-R	Rechargeable battery AA type for wireless Catheter Puller (set of 4)				x	x	x						
Battery-CR2025	Battery CR-2025 for RC 1200 remote control (set of 5)				x	x	x	x					
FPMA-D200-B	Black monitor arm for TFT flatscreen, screw type for Solar trolley				x	x							
IV Pole Silver	Infusion pole for Solar Silver, fixed, 4 hooks, mounting clamps, 1 accessory rail				x	x		x	x	x	x	x	x
PAINT 5014	RAL 5014 touch-up paint (Blue)				x	x	x	x	x	x	x	x	x
PAINT 7035	RAL 7035 touch-up paint (Grey)				x	x	x	x	x	x	x	x	x
PC-NL	Power cable Netherlands				x	x	x	x	x	x	x	x	x
PC-UK	Power cable UK				x	x	x	x	x	x	x	x	x
Safety Set 115V Q	Solar safety set, with extra quiet safety module and USA power cord				x								
Safety Set 230V Q	Solar safety set, with extra quiet safety module and EURO power cord				x								
SAR-55	Solar accessory rail including locking screw, length 55 cm				x	x		x	x	x	x	x	x
SAR-70	Solar accessory rail including locking screw, length 70 cm				x	x		x	x	x	x	x	x
SDC-0.3	MMS bus cable, 30 cm				x	x	x	x	x	x	x	x	x
SDC-0.6	MMS bus cable, 60 cm				x	x	x	x	x	x	x	x	x
SDC-1.6	MMS bus cable, 1.6 meter				x	x	x	x	x	x	x	x	x
S-Puller-BTGL40	Catheter Puller guider, 40 cm				x	x	x						
S-Puller-BTSL40	Catheter Puller slider, 40 cm				x	x	x						
SSC-2	Solar Clamp for a round pole, 20-40 mm				x	x	x	x	x	x	x	x	x
SSC-3	Solar Clamp with locking screw for accessory rail (for Pump or CIM)				x	x	x	x	x	x	x	x	x
SSC-4	Solar Clamp without locking screw for accessory rail				x	x	x	x	x	x	x	x	x
SSC-21	Hinging accessory rail including 2 Solar clamps				x	x					x	x	x
SSC-CP	Catheter peg (holder) for GI water perfused catheters				x	x							
Trolley Cover	Cover for trolley				x	x		x	x	x	x	x	x

# Pictures GI Motility & Reflux Management

## Add-ons and accessories

### Solar Puller packages

AO-GI Puller C1



AO-GI Puller W1



AO-GI Puller C2



AO-GI Puller W2



AO-GI-Puller C3



AO-GI Puller W3

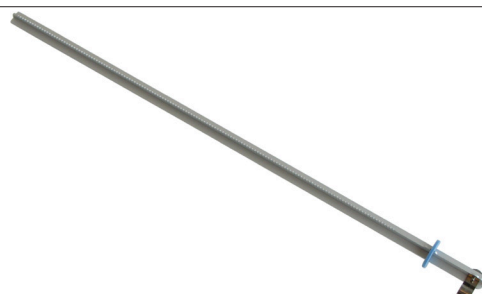


### Accessories for wireless puller

S-Puller-BTGL40



S-Puller-BTSL40



# Pictures GI Motility & Reflux Management

## Add-ons and accessories

### Solar accessories

FPMA-D200-B



IV Pole Silver



SSC-CP



SSC-H



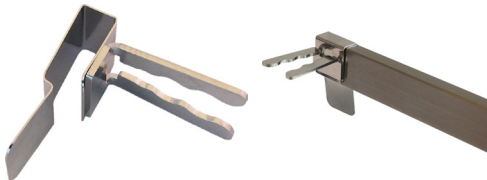
Trolley Cover



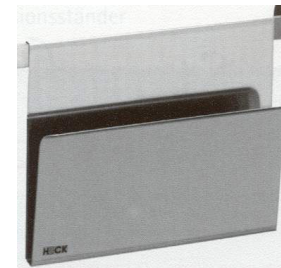
C/Holder-Mem



10 10 075



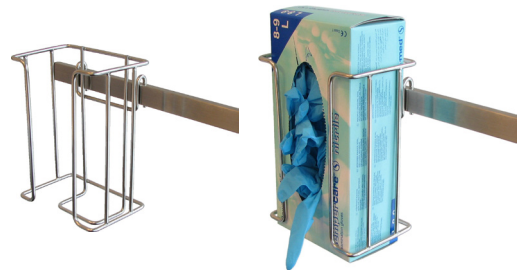
10 10 080



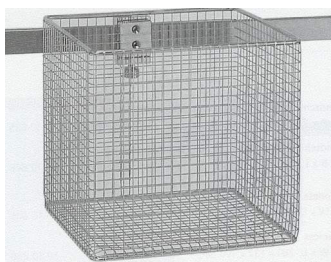
10 10 679



10 10 958



10 10 977



10 10 078

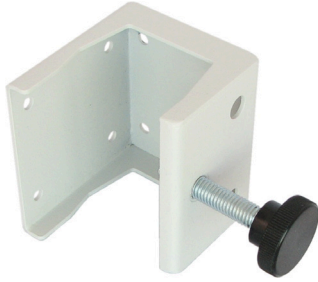


# Pictures GI Motility & Reflux Management

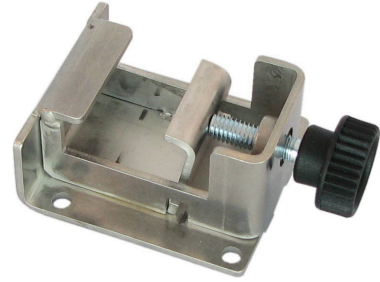
## Add-ons and accessories

### Mounting clamps

SSC-2



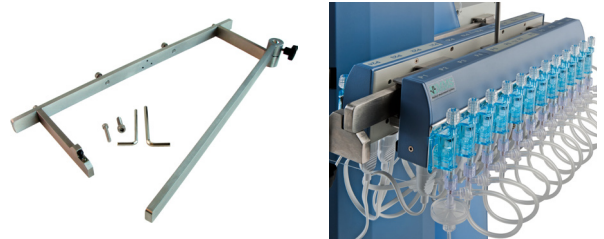
SSC-3



SSC-4



SSC-21



### Miscellaneous

AO-Neuro



AO-Solar EGG



Mouse Tray



SDC-0.3  
SDC-0,6  
SDC-1,6  
SDC-4  
SDC-10



AMB P-BAG





# OPTIONS AND SOFTWARE

# Video options

Basic video options, Video software upgrades, Video hardware options

## Basic video options

VID 200	<b>Video option to grab pictures</b> Including Economy Video software & Image Processing software, Cronosplus video board, interface cable and Video manual. For PAL or NTSC video signals.
VID 300	<b>Video option to grab pictures</b> Including Video software & Image Processing software for contrast enhancements, image export, measurements etc. Cronosplus video board, interface cable and Video manual. For PAL or NTSC video signals.
VID 410	<b>Video option to grab pictures and Cine-loops</b> Including Video software & Image Processing software for contrast enhancements, image export, measurements etc. Morphis video board, interface cable and Video manual. For PAL or NTSC video signals.
VID 610	<b>Video option to grab pictures and Cine-loops</b> Including Video software & Image Processing software for contrast enhancements, image export, measurements etc. Solios video board. interface cable and Video manual. For PAL, NTSC or High Resolution Composite video signals with pixel clock up to 65 MHz (i.e. 1024x768 @60 Hz). <b>Note:</b> For quotations of systems in combination with High Resolution X-ray machines, please contact us!
VID 620	<b>Video option to grab pictures</b> Including Video software & Image Processing software for contrast enhancements, image export, measurements etc. Orion HD video board. Interface cable and Video manual. For PAL, NTSC, VGA or DVI-D video signals. <b>Note:</b> For quotations of systems in combination with this video option, please contact us! Installation of this video board in the computer has to be done by Laborie.
VID 625	<b>Video option to grab pictures and Cine-loops</b> Including Video software & Image Processing software for contrast enhancements, image export, measurements etc. Orion HD video board. Interface cable and Video manual. For PAL, NTSC, VGA or DVI-D video signals. <b>Note:</b> For quotations of systems in combination with this video option, please contact us! Installation of this video board in the computer has to be done by Laborie.

## Video software upgrades

VID200-300	Upgrade from VID 200 to VID 300.
------------	----------------------------------

## Video hardware options

VSC 600	High Resolution computer-to-video down converter to convert High Resolution signals into PAL or NTSC signals, for High Resolution X-ray machines without BNC cable output. Can also be used to offer a cost-effective solution in case a customer has a High Resolution X-ray machine, but does not need High Resolution video images (VID 410 in combination with a down converter, instead of VID 610). <b>Note:</b> Additional interface or extension cables may be required. Please contact us for more information!
VID 508 D	Video preamplifier / splitter option (with 1 input and 5 outputs). For output to TV Monitor(s), Video printer, VCR, Matrox Video board etc. <b>Note:</b> Limited stock!
VID 520	Video Isolator Option (Isolator between X-ray machine and video board).
HEM FS	Dual foot switch with USB interface (for Video and Neuro applications). <b>Note:</b> Limited stock!
2005882	Optical USB extender and isolator, 20 m (For Solar in X-ray room configuration).
221002	MPU12C-102 medical grade power adapter for 2005882 (one piece needed).



# Video options

## Video option comparison

The video option consists of a video board and software module.

Each video board has its own capabilities.

The video-mix and digitizing option as well as the video image processing option are supplied with all boards.

In the tables below you will find a description of the software options and possibilities for each board.

Overview	VID 200 Cronosplus	VID 300 Cronosplus	VID 410 Morphis	VID 610 Solios	VID 620 Orion HD	VID 625 Orion HD
Video-mix and image digitizing <sup>1</sup>	+	+	+	+	+	+
Cine-loop digitizing <sup>2</sup>	-	-	+	+	-	+
High Resolution digitizing <sup>3</sup>	-	-	-	+	+	+
Color Video	+ Composite	+ Composite	+ Composite	-	+ Composite VGA DVI-D	+ Composite VGA DVI-D
Measurement software	VID 200 Cronosplus	VID 300 Cronosplus	VID 410 Morphis	VID 610 Solios	VID 620 Orion HD	VID 625 Orion HD
PAL/NTSC/CCIR/RS170	+	+	+	+	+	+
Monochrome video	+	+	+	+	+	+
Color video as from MMS software version 8.19	+	+	+	-	+	+
Selectable capture window	-	+	+	+	+	+
Rotation of video image 90/180	-	+	+	+	+	+
Max. number of images	10	99	99	99	99	99
Display X-ray full screen	-	+	+	+	+	+
Display X-ray (1:4) 25%	+	+	+	+	+	+
Display X-ray (1:16) 6%	-	+	+	+	+	+
Overlay (X-ray on top of graphs)	+	+	+	+	+	+
Underlay (X-ray behind graphs)	-	+	+	+	+	+
Cine-loop	-	-	+	+	-	+
Cine-loop to memory	-	-	+	+	-	+
Duals source cine-loop	-	-	+	-	-	-
Save cine-loop to disk	-	-	+	+	-	+
Reposition video window (during pre-test)	+	+	+	+	+	+
Analysis software	VID 200 Cronosplus	VID 300 Cronosplus	VID 410 Morphis	VID 610 Solios	VID 620 Orion HD	VID 625 Orion HD
Cine-loop	-	-	+	+	-	+
X-ray image update when moving mouse	+	+	+	+	+	+
Display X-ray Full screen	+ at mouse click	+	+	+	+	+
Display X-ray (1:4) 25%	+	+	+	+	+	+
Display X-ray (1:16) 6%	-	+	+	+	+	+
Overlay (X-ray on top of graphs)	+	+	+	+	+	+
Underlay (X-ray behind graphs)	-	+	+	+	+	+
Print video image in standard report	+	+	+	+	+	+
Video image processing	+	+	+	+	+	+

+ included  
- not possible

<sup>1</sup> Allows simultaneous display of X-ray or Ultrasound images and curves. Images can be digitized during the measurement.

<sup>2</sup> Digitizes a number of consecutive images (cine-loop, saved as AVI file). During the investigation you may switch between cine-loops and single images.

<sup>3</sup> For the **Solios** board: non-standard video signals (signals with deviating interlacing, image frequency and/or image size).

<sup>3</sup> For the **Orion HD** board: digitizes high resolution video signals (VGA, DVI-D, signals with a higher image frequency or image size).

# Video options

Per system

## Urodynamics

Article code	Description	U1-1	U2-1	U10-1	U3-1	U3-5	U3-3	U3-4	U4-1	U4-2	U4-3	U4-4	U4-5	U4-6	U4-7	U8-3	U8-4	U5-1	U6-1
VID 200	Economy Video Digitisation option, Conosplus board								x	x	x	x	x			x	x		
VID 300	Video Digitisation option, Cronosplus board								x	x	x	x	x			x	x		
VID 410	Video digitisation option, cine-loop software, Morphis board								x	x	x	x	x			x	x		
VID 610	High Resolution Video digitisation option, cine-loop software, Solios board								x	x	x	x	x			x	x		
VID 620	DVI Video Digitisation option, Orion HD board								x	x	x	x	x			x	x		
VID 625	DVI Video Digitisation option, cine-loop software, Orion HD board								x	x	x	x	x			x	x		
VSC 600	High resolution comuter-to-video down converter assembly								x	x	x	x	x			x	x		
VID 508 D	Video preamplifier / splitter (PAL/NTSC and non-standard composite video) option with 1 input and 5 outputs								x	x	x	x	x			x	x		
VID 520	Video isolator option, isolator between X-ray machine and video board								x	x	x	x	x			x	x		
HEM FS	Dual Footswitch for HEM or video with USB interface								x	x	x	x	x			x	x		
2005882	Optical USB extender and isolator, 20 m								x	x	x	x	x			x	x		
221002	MPU12C-102 Medical grade power adaptor for 2005882								x	x	x	x	x			x	x		
VID 200-300	Upgrade from VID 200 to VID 300								x	x	x	x	x			x	x		

## GI Motility & Reflux Measurement

Article code	Description	G2-3	G2-1	G3-3	G3-5	G3-6	G3-7	G3-8	G3-12	G3-14	G3-9	G3-10	G3-15
VID 200	Economy Video Digitisation option, Conosplus board			x	x	x		x	x	x	x	x	x
VID 300	Video Digitisation option, Cronosplus board			x	x	x		x	x	x	x	x	x
VID 410	Video digitisation option, cine-loop software, Morphis board			x	x	x		x	x	x	x	x	x
VID 610	High Resolution Video digitisation option, cine-loop software, Solios board			x	x	x		x	x	x	x	x	x
VID 620	DVI Video Digitisation option, Orion HD board			x	x	x		x	x	x	x	x	x
VID 625	DVI Video Digitisation option, cine-loop software, Orion HD board			x	x	x		x	x	x	x	x	x
VSC 600	High resolution comuter-to-video down converter assembly			x	x	x		x	x	x	x	x	x
VID 508 D	Video preamplifier / splitter (PAL/NTSC and non-standard composite video) option with 1 input and 5 outputs			x	x	x		x	x	x	x	x	x
VID 520	Video isolator option, isolator between X-ray machine and video board			x	x	x		x	x	x	x	x	x
HEM FS	Dual Footswitch for HEM or video with USB interface			x	x	x		x	x	x	x	x	x
2005882	Optical USB extender and isolator, 20 m			x	x	x		x	x	x	x	x	x
221002	MPU12C-102 Medical grade power adaptor for 2005882			x	x	x		x	x	x	x	x	x
VID 200-300	Upgrade from VID 200 to VID 300			x	x	x		x	x	x	x	x	x

# Video options

## Video signal specification form

### VIDEO SIGNAL SPECIFICATION FORM

Name of hospital :  
 Manufacturer X-ray machine :  
 Name of X-ray machine :  
 X-ray room number :  
 Video specifications [ ] PAL/CCIR (interlaced)  
                           [ ] NTSC/RS-170 (interlaced)  
                           [ ] VGA/DVI-A (progressive, fill in section 1)  
                           [ ] DVI-D (progressive, fill in section 1)  
                           [ ] Non standard video specifications (fill in section 2)  
 Video output plug [ ] BNC plug  
                           [ ] VGA plug  
                           [ ] DVI-D plug  
                           [ ] DVI-I plug  
                           [ ] Other, please specify.....  
 Galvanic isolation available yes / no

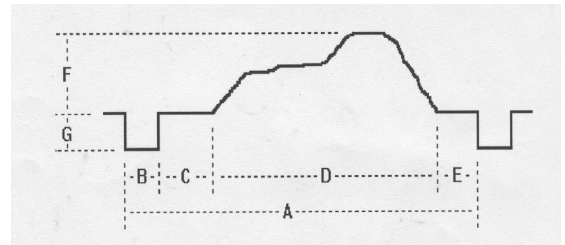
#### Section 1: VGA/DVI video specifications

Pixel clock : MHz  
 Framerate : Hz  
 Image size : ..... x ..... Hpixel x Vpixel

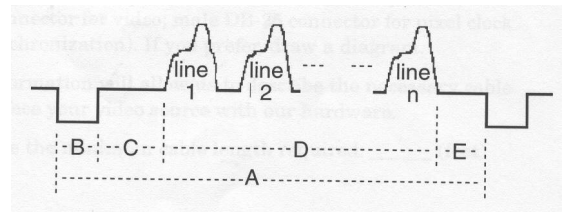
#### Section 2: Non standard video specifications

Pixel clock : MHz / ns  
 Horizontal frequency : KHz

A: Horizontal Line time : us / pixels  
 B: Horizontal sync time : us / pixels  
 C: Horizontal back porch : us / pixels  
 D: Horizontal active video : us / pixels  
 E: Horizontal front porch : us / pixels  
 F: Active video amplitude : V p-p  
 G: Sync pulse amplitude : V p-p



Vertical field frequency : Hz  
 A: Vertical field time : msec / lines  
 B: Vertical sync time : msec / lines  
 C: Vertical back porch : msec / lines  
 D: Vertical active video : msec / lines  
 E: Vertical front porch : msec / lines



Interlaced fields : yes / no  
 Image circle/square : ..... x ..... Hpixel x Vpixel

-----  
 Name

-----  
 Date

Please request and use the latest revision of the Video signal installation form!  
 MMS document code: 0010-FRM-008-x

# Network, HIS Link & DICOM options

## Network software

### IMPORTANT NOTES, PLEASE READ BEFORE QUOTING NETWORK OR HIS LINK SOFTWARE OPTIONS

- 1 Any Network with a dedicated server can be used (Windows, Novell, Linux).
- 2 The Network server and software are not included.
- 3 Maintenance and installation of the Network is not included.
- 4 The MMS Software can be placed on a hospital server.  
If the server performance or the network is poor, we advise to use a dedicated server on a separate MMS network.
- 5 If necessary the MMS Server can be connected to the hospital's network.
- 6 The MMS network licenses for analysis are 'floating' licenses. This means that the maximum number of simultaneous users is restricted by the number of licenses. It does not matter from which (PC based) computer customers access the database. The number of licenses you need is the equivalent of the number of analysis computers which will be simultaneous online. Default licenses number NET600 = 2
- 7 Your server needs a minimum of 5 GB free space initially. Per year free space on the server needs to be reserved (total is depending on the number of investigations per year). Indications per investigation; stationary 250kB, ambulatory 1MB for Luna/Orion II, 50MB for Omega, 4-8 MB for Video images per study.
- 8 We advice to implement a backup procedure.
- 9 Make sure ALL the systems, including the applicable investigation computers which will be part of the network, are compliant.
- 10 Check if user rights for reading and witting a shared drive are sufficient. Also refer to our "NET 600/610 Network rights software".
- 11 Before ordering a network or HIS link solution please contact us first. Indicate the network or HIS link solution on the order form when ordering.

## Network software

**NET 600** Network analysis Software for first 2 users  
Including all MMS Software used in currently purchased Options and Network monitor software  
**Note:** Manual not included! Please order MAN-085 separately.

**NET 600 A** Network analysis Software per additional user (for more than 2 users)  
Including all MMS Software used in currently purchased Options and Network monitor software.  
**Note:** Manual not included! Please order MAN-085 separately.

**NET 600 B** Network software for back-up function on network server.  
**Note:** Manual not included! Please order MAN-085 separately.

**NET 610** Network monitor option (on-line reviewing during measurement in another room).  
**Note:** Not available for Solar Blue. Manual not included! Please order MAN-085 separately.

**MAN-085** Network User's and Installation manual

# Network, HIS Link & DICOM options

## HIS Link software, DICOM options

### HIS Link software

---

HIS 626	<b>HIS link import Option (HL7)</b> Automatic patient data import (demographics) from Hospital Information System via HL7. Please contact the IT department of the hospital and us before offering this option <b>Note:</b> Use the NET 626 test program to verify if this option can be used! Manual note included! Please order MAN-140 separately.
HIS 628	<b>HIS link export Option (HL7)</b> Please contact the IT department of the hospital and us before offering this option. This option has to be customized. <b>Note:</b> Manual not included! Please order MAN-140 separately.
HIS 636	<b>Flowmaster HIS link import Option (HL7)</b> Automatic patient data import (demographics) from Hospital Information System via HL7. Please contact the IT department of the hospital and us before offering this option <b>Note:</b> Order a USB-Option-Key! Use the NET 626 test program to verify if this option can be used! Manual not included! Please order MAN-140 separately.
HIS 638	<b>Flowmaster HIS link export Option (HL7)</b> Please contact the IT department of the hospital and us before offering this option. This option has to be customized. <b>Note:</b> Order a USB-Option-Key! Manual not included! Please order MAN-140 separately.
MAN-140	HIS/EMR Integration User's and Installation manual

---

### DICOM options

---

DIC 640	<b>DICOM report engine</b> Allows one user to send any report that can be printed on a printer to the PACS in DICOM format. <b>Note:</b> Recommended together with DIC 660 (to connect with worklist). A Software CD, Key and manual are included. MAN-140 is not included and needs to be ordered separately. The software can be copied to other PC's, but the key is needed to activate the software.
DIC 660	<b>DICOM HIS import</b> Allows patient data import from DICOM modality worklist. <b>Note:</b> Manual not included! Please order MAN-140 separately.
MAN-140	HIS/EMR Integration User's and Installation manual

---

Besides the DICOM options as mentioned Laborie offers a choice of other DICOM interface options. Please contact us for more information.

# Network, HIS Link & DICOM options

Network and HIS Link hardware option, Network related options

## Network and HIS Link hardware option

---

MI 1005	Medical grade Network Isolator (Isolator between network and PC) 5 KV, IEEE 802.3, 10/100/1000 Mbit/s
---------	---

---

## Network related options

---

USB-Option-Key	MMS Software option key. In case a 2nd PC is not connected to a network (required to make protected software options available).
----------------	---

---

USB-O-Key-Fee	MMS Software option key, copy fee (Free for 2nd key with serial number of MMS system and all enabled software)
---------------	--

---

SSP-CR	Card Reader integration, enables the MMS software to communicate with card reader. <b>Note:</b> Will only function if card reader project has been accomplished for your country. Requirements are: (1) magnetic strip system (2) MAGTEK swipe reader (3) coding info.
--------	--

---

# Network, HIS link & DICOM options

Per system

## Urodynamics

Article code	Description	U1-1	U2-1	U10-1	U3-1	U3-5	U3-3	U3-4	U4-1	U4-2	U4-3	U4-4	U4-5	U4-6	U4-7	U8-3	U8-4	U5-1	U6-1
NET 600	Network analysis software for first 2 users				x	x	x	x	x	x	x	x	x	x	x	x	x	x	
NET 600 A	Network analysis software for 1 additional user				x	x	x	x	x	x	x	x	x	x	x	x	x	x	
NET 600 B	Network software back-up function on network server				x	x	x	x	x	x	x	x	x	x	x	x	x	x	
NET 610	Network monitor option								x	x	x	x	x	x	x	x	x	x	
HIS 626	HIS link import option (HL7)				x	x	x	x	x	x	x	x	x	x	x	x	x	x	
HIS 628	HIS link export option (HL7)				x	x	x	x	x	x	x	x	x	x	x	x	x	x	
HIS 636	Flowmaster HIS link import option (HL7)	x																	
HIS 638	Flowmaster HIS link export option (HL7)	x																	
DIC 640	DICOM report engine	x			x	x	x	x	x	x	x	x	x	x	x	x	x	x	
DIC 660	DICOM worklist	x			x	x	x	x	x	x	x	x	x	x	x	x	x	x	
MAN-085	Network User's & Installation manual	x			x	x	x	x	x	x	x	x	x	x	x	x	x	x	
MAN-140	HIS/EMR integration Users & Installation manual				x	x	x	x	x	x	x	x	x	x	x	x	x	x	
MI 1005	Medical grade network isolator (between network and PC)				x	x	x	x	x	x	x	x	x	x	x	x	x	x	
USB-O-Key-Fee	MMS software option key, copy fee	x			x	x	x	x	x	x	x	x	x	x	x	x	x	x	
USB-Option-Key	MMS software option key	x			x	x	x	x	x	x	x	x	x	x	x	x	x	x	
SSP-CR	Card reader integration				x	x	x	x	x	x	x	x	x	x	x	x	x	x	

## GI Motility & Reflux Measurement

Article code	Description	G2-3	G2-1	G3-3	G3-5	G3-6	G3-7	G3-8	G3-12	G3-14	G3-9	G3-10	G3-15
NET 600	Network analysis software for first 2 users	x	x	x	x	x	x	x	x	x	x	x	x
NET 600 A	Network analysis software for 1 additional user	x	x	x	x	x	x	x	x	x	x	x	x
NET 600 B	Network software back-up function on network server	x	x	x	x	x	x	x	x	x	x	x	x
NET 610	Network monitor option			x	x	x	x	x	x	x	x	x	x
HIS 626	HIS link import option (HL7)	x	x	x	x	x	x	x	x	x	x	x	x
HIS 628	HIS link export option (HL7)	x	x	x	x	x	x	x	x	x	x	x	x
DIC 640	DICOM report engine	x	x	x	x	x	x	x	x	x	x	x	x
DIC 660	DICOM worklist	x	x	x	x	x	x	x	x	x	x	x	x
MAN-085	Network User's & Installation manual	x	x	x	x	x	x	x	x	x	x	x	x
MAN-140	HIS/EMR integration Users & Installation manual	x	x	x	x	x	x	x	x	x	x	x	x
MI 1005	Medical grade network isolator (between network and PC)	x	x	x	x	x	x	x	x	x	x	x	x
USB-O-Key-Fee	MMS software option key, copy fee	x	x	x	x	x	x	x	x	x	x	x	x
USB-Option-Key	MMS software option key	x	x	x	x	x	x	x	x	x	x	x	x
SSP-CR	Card reader integration	x	x	x	x	x	x	x	x	x	x	x	x

## Software upgrades

WIN8.1-9.5	MMS software upgrade from version 8.1 to 9.5
WIN8.3-9.5	MMS software upgrade from version 8.3 to 9.5
WIN8.7-9.5	MMS software upgrade from version 8.7 to 9.5
WIN8.9-9.5	MMS software upgrade from version 8.9 to 9.5
WIN8.11-9.5	MMS software upgrade from version 8.11 to 9.5
WIN8.17-9.5	MMS software upgrade from version 8.17 to 9.5
WIN8.19-9.5	MMS software upgrade from version 8.19 to 9.5
WIN8.21-9.5	MMS software upgrade from version 8.21 to 9.5
WIN8.23-9.5	MMS software upgrade from version 8.23 to 9.5
WIN9.1-9.5	MMS software upgrade from version 9.1 to 9.5
WIN9.3-9.5	MMS software upgrade from version 9.3 to 9.5
USB-Option-Key	MMS software option key <b>Note:</b> the MMS software option key will be necessary when a keycard of an old MMS system does no longer fit in the new computer after upgrading.

## IMPORTANT NOTES ON SOFTWARE UPGRADES

- 1 As from MMS software 9.1, the UD2000 and UPS-2020 systems are not supported anymore.
- 2 Upgrades until MMS software version 8.21 are free of charge for Solar GI HRM and Ohmega systems.
- 3 The same MMS software upgrade codes are used for all MMS systems (Nexam, Solar Uro, Solar Blue, Luna, Ohmega, Solar GI).



## GI Motility and Reflux measurement Interface options for CIM-AUX

C/pH4A	4 Antimony pH channels with RJ45 ('modular telephone plug')
C/pH2G	2 Glass pH channels with 2 x Lemo-1
C/pHISFET	2 ISFET pH channels
C/TMPD2	2 TMPD channels with Lemo-3, for direct input of Calomel TMPD signals
C/In2	2 Universal analog input channels
C/In4	4 Universal analog input channels

## Pulse Oximeter

SSP-PulseOxy	Wireless SpO <sub>2</sub> and pulse interface for (Nonin) Onyx
--------------	--

## GI Motility and Reflux measurement Barostat

C/Barostat2	Barostat channels (single drive), 1 pressure and 1 volume, for interfacing with G&J Barostat, including 2 cables BNC. With galvanic isolation.
C/Barostat4	4 Barostat channels (dual drive), 2 pressure and 2 volume, for interfacing with G&J Barostat, including 4 cables BNC. With galvanic isolation.
Barostat-S	Distender series II single drive 1300 ml
Barostat-D	Distender series II dual drive 2 x 1300 ml
DeLuxe-SW	Protocol Plus Deluxe software
Perception	Perception Panel
Perception-Deluxe	Deluxe Perception Panel

**Note:** Not every distributor of Laborie can sell the Barostat in his country. Please contact us for more information, prior to quoting. Barostat can be connected to a Solar system via C/Barostat2-4. Other cylinders on request (25, 60, 90, 125, 200, 300, 450, 750).

## GI Motility and Reflux measurement Ohmega types with 2 or 4 pressure channels and/or Sleeplab interface

---

Besides the Ohmega systems mentioned in this catalogue, Laborie offers a choice of other options.  
Please contact us for more information.

### General options Blood Pressure Monitor interface

---

AO-BPM Medlab	<b>Blood Pressure / SpO2 interface software for (Medlab) Vitro</b> BP and SpO2 interface software (SSP-BMP Medlab) for Medlab Vitro. Blood Pressure Monitor User's and Installation manual.
---------------	--

AO-BPM Nonin	<b>Blood Pressure / SpO2 interface software for (Nonin) Avant 2120</b> BP and SpO2 interface software (SSP-BMP Nonin) for Nonin Avant 2120. Blood Pressure Monitor User's and Installation manual.
--------------	---

Applicable for all Solar, Solar Blue, Nexam and Solar GI systems.

**Note:** The monitor has to be purchased locally.

# Computer specifications

## Recommended computer specifications for NEW systems

	Nexam		Solar Uro & GI		Solar Blue		Flowmaster		Ohmega Orion II	Luna	Scanmaster (stand alone & integrated)
	no video	video	no video	video	notebook	desktop	notebook	desktop			notebook / desktop
<b>Processor</b>	Core i3	Core i3	Core i3	Core i3	Core i3	Core i3	Celeron	Celeron	Core i3	Core i3	Celeron
<b>Clock speed</b>	≥ 2.0 GHz	≥ 2.0 GHz	≥ 2.0 GHz	≥ 2.0 GHz	≥ 2.0 GHz	≥ 2.0 GHz	≥ 2.0 GHz	≥ 2.0 GHz	≥ 2.0 GHz	≥ 2.0 GHz	≥ 1.3 GHz
<b>Internal memory</b>	2 GB	2 GB	2 GB	2 GB	2 GB	2 GB	2 GB	2 GB	2 GB	2 GB	2 GB
<b>Hard disk</b>	250 GB	500 GB	250 GB	500 GB	250 GB	250 GB	250 GB	250 GB	250 GB	250 GB	250 GB
<b>Free expansion slots for video option <sup>(1)</sup></b>	-	1	-	1	-	-	-	-	-	-	-
<b>CD-RW / DVD-RW</b>	1	1	1	1	1	1	1	1	1	1	-
<b>Additional VGA card</b>	-	-	1 (only with HRM)		-	-	-	-	-	-	-
<b>Speakers</b>	1	1	1	1	1	1	-	-	-	-	-
<b>USB ports</b>	7 to 8	7 to 8	6 to 8	6 to 8	4	5 to 8	2 to 4	4 to 5	5 to 6	5 to 7	≥ 2 <sup>(2)</sup>
<b>Required for</b>	Nexam MMS key Keyboard Mouse Printer USB stick 2 BT dongles	Nexam MMS key Keyboard Mouse Printer USB stick 2 BT dongles	Solar MMS key IR receiver Keyboard Mouse Printer USB stick <i>optional:</i> BT dongle	Solar MMS key IR receiver Keyboard Mouse Printer USB stick <i>optional:</i> BT dongle	Solar Blue MMS key Printer USB stick <i>optional:</i> BT dongle Mouse	Solar Blue MMS key IR receiver Keyboard Mouse Printer USB stick <i>optional:</i> BT dongle	Flowmaster Printer USB stick BT dongle <i>optional:</i> Mouse	Keyboard Mouse Printer USB stick BT dongle	Ohmega (or Orion II) Keyboard Mouse Printer USB stick BT dongle	Luna MMS key Keyboard Mouse Printer USB stick BT dongle	Scanmaster USB stick <i>optional:</i> Mouse
<b>Printer <sup>(3)</sup></b>	any color printer	any color printer <sup>(4)</sup>	any color printer	any color printer	any color printer	any color printer	any printer	any printer	any color printer	any printer	any printer (may require safety module)

- (1) Not all types/brands are compatible with our video options!  
Computers that are going to be used with a video option must be checked in advance for compatibility.  
We would like to advise you to make an agreement with your local computer supplier to test a computer that conforms to the specifications and have the possibility to return it when it does not function adequately with the video board.

Recommended computer: DELL series. Please contact us if you cannot find a suitable computer.

- (2) Minimum of 0,5 A per USB is required. 0,5 A for USB ports is standard, but sometimes the 0,5 A is divided between the different USB ports. If so, the Scanmaster does not work. Please read our computer specifications carefully.
- (3) A printer with a front paper tray is recommended for the Solar trolley, Solar Blue Laptop integrated and the Solar GI HRM H<sub>2</sub>O Compact.
- (4) The dimensions of the printer will determine if the drawer can be maintained or must be removed from the trolley.

### Important Windows 7/8 notes

If you order a computer with the Windows 7/8 operating system, please make sure you order the Windows 7/8 Professional edition, 32 or 64 bit (for use with a video option only the 32 bit is supported). These are the only Windows 7/8 editions that have been approved to run the MMS software. Laborie cannot guarantee compatibility with the MMS software if a different Windows 7/8 edition has been installed.

Additional computer specifications:  
Core Duo/Core 2 Duo CPU (or equivalent) or Core i3/i5/i7. DVD-ROM drive. DirectX 9 supported video card.

In case you order a **notebook** with **internal Bluetooth interface**, please make sure to install Microsoft Bluetooth stack.  
Please note that the range of the internal Bluetooth is only 10 meter, instead of 50 meter with a BT dongle.

# Computer specifications

## Minimum computer specifications for UPGRADING MMS systems

	UD-2000, Libra+( <sup>1</sup> )	UD-2000, Libra+( <sup>1</sup> )	UPS-2020( <sup>2</sup> )	UPS-2020( <sup>2</sup> )	AlphaPlus	ORION( <sup>1</sup> )
	no video	video	no video	video		
<b>Processor</b>	Pentium III	Pentium III	Pentium III	Pentium III	Celeron	Pentium III
<b>Clock Speed</b>	1.0 GHz.	1.0 GHz.	1.0 GHz.	1.0 GHz.	≥ 2.0 GHz.	1.0 GHz.
<b>Internal memory</b>	256 MB	256 MB	256 MB	256 MB	Win-XP: 512 MB	256 MB
<b>Operating system</b>	Win 98, 2000, XP	Win 98, 2000, XP	Win 98, 2000, XP	Win 98, 2000, XP	Win 98, 2000, XP	Win 98, 2000, XP
<b>Hard disk</b>	10 GB	40 GB	10 GB	40 GB	80 GB	5 GB
<b>Free PCI slots for video option<sup>(2)</sup></b>	-	2	-	2	-	-
<b>Floppy disk drive</b>	3.5"	3.5"	3.5"	3.5"	-	3.5"
<b>CD-ROM</b>	1	1	1	1	-	1
<b>CD-RW/DVD-RW</b>	-	-	-	-	1	-
<b>Sound card / speakers</b>	1	1	1	1	-	1
<b>USB ports</b>	0, 1 or 2	0, 1 or 2	2 or 3	2 or 3	5 to 6	0 or 1
<b>Required for:</b>	Printer MMS key (UD 2000)	Printer MMS key (UD 2000)	Printer IR Receiver MMS key	Printer IR Receiver MMS key	AlphaPlus MMS key Keyboard Mouse Printer USB stick	
<b>Parallel port</b>	0 or 1 (Printer)	0 or 1 (Printer)	0 or 1 (Printer)	0 or 1 (Printer)	-	0 or 1 (Printer)
<b>Serial channels</b>	1	1	1 or 2	1 or 2	-	1
<b>Printer</b>	Color printer	Color printer	Color printer	Color printer	any printer	Color printer

(1) These systems are not supported on a Windows Vista or Windows 7 operating system.

(2) Note all computer types/brands are compatible with our video options.  
Computers that are going to be used with the video option must be checked in advance for compatibility.  
We would like to advise you to make an agreement with your local computer supplier to test a computer that conform to the specifications and have the possibility to return it when it does not function adequately with the video board.

Recommended computer: DELL series. Please contact us if you cannot find a suitable computer.

## Upgrade notes

Current situation	New situation	Note
Old PC + old software (6.16-7.3)	New PC + old software (6.16-7.3)	<ul style="list-style-type: none"> <li>• Replace key card with USB key.</li> <li>• Replace IR receiver with USB IR receiver.</li> <li>• Does the old software work with the new windows version? (check the compatibility list)</li> </ul>
Old PC + old software (6.16-7.3)	Old PC + new software (9.XX)	<ul style="list-style-type: none"> <li>• Is the PC fast enough for the new software?</li> <li>• Does the new software work with the old Windows version?</li> </ul>
Old PC + old software (6.16-7.3)	New PC + new software (9.XX)	<ul style="list-style-type: none"> <li>• Replace key card with USB key.</li> <li>• Replace IR receiver with USB IR receiver.</li> </ul>

# Compatibility list

## Operating system versus MMS software / video

non-video	8.1	8.3	8.7-811	8.9	8.11	8.17	8.19	8.21	8.23	9.1	9.3	9.5
WIN 98	Yes	-	-	-	-	-	-	-	-	-	-	-
WIN NT	-	-	-	-	-	-	-	-	-	-	-	-
WIN ME	Yes	-	-	-	-	-	-	-	-	-	-	-
WIN 2000	Yes	Yes	Yes	Yes	Yes	Yes	Yes	-	-	-	-	-
WIN XP	Yes	Yes	Yes	Yes	Yes	Yes	Yes	Yes	Yes	Yes	Yes	Yes
WIN VISTA BE 32 bit	-	-	Yes	Yes	Yes	Yes	Yes	Yes	Yes	Yes	Yes	Yes
WIN 7, PROF. 32 & 64 bit	-	-	-	-	-	-	Yes	Yes	Yes	Yes	Yes	Yes
WIN 8, PROF. 32 & 64 bit	-	-	-	-	-	-	-	-	Yes	Yes	Yes	Yes
KeyCard	Yes	-	-	-	-	-	-	-	-	-	-	-
USB key (Aladin)	Yes	-	-	-	-	-	-	-	-	-	-	-
USB key (Matrix)	-	≥ 1362	Yes	Yes	Yes	Yes	Yes	Yes	Yes	Yes	Yes	Yes

KeyCard	USB key
Yes	-
Yes	Yes
Yes	-
Yes	Yes
-	Yes
-	Yes
-	Yes
-	Yes

VID 200 and VID 300	8.1	8.3	8.7-811	8.9	8.11	8.17	8.19	8.21	8.23	9.1	9.3	9.5
WIN 98	-	-	-	-	-	-	-	-	-	-	-	-
WIN NT	-	-	-	-	-	-	-	-	-	-	-	-
WIN ME	-	-	-	-	-	-	-	-	-	-	-	-
WIN 2000	-	Yes	Yes	Yes	Yes	Yes	Yes	-	-	-	-	-
WIN XP	-	Yes	Yes	Yes	Yes	Yes	Yes	Yes	Yes	Yes	Yes	Yes
WIN VISTA BE 32 bit	-	-	-	-	-	-	-	-	-	-	-	-
WIN 7, PROF. 32 bit	-	-	-	-	-	-	-	Yes	Yes	Yes	Yes	Yes
WIN 7, PROF. 64 bit	-	-	-	-	-	-	-	-	-	-	-	-
WIN 8, PROF. 32 bit	-	-	-	-	-	-	-	-	-	-	-	Yes
WIN 8, PROF. 64 bit	-	-	-	-	-	-	-	-	-	-	-	-

VID 410	8.1	8.3	8.7-811	8.9	8.11	8.17	8.19	8.21	8.23	9.1	9.3	9.5
WIN 98	-	-	-	-	-	-	-	-	-	-	-	-
WIN NT	-	-	-	-	-	-	-	-	-	-	-	-
WIN ME	-	-	-	-	-	-	-	-	-	-	-	-
WIN 2000	-	-	Yes	Yes	Yes	Yes	Yes	-	-	-	-	-
WIN XP	-	-	Yes	Yes	Yes	Yes	Yes	Yes	Yes	Yes	Yes	Yes
WIN VISTA BE 32 bit	-	-	-	-	-	-	-	-	-	-	-	-
WIN 7, PROF. 32 bit	-	-	-	-	-	-	-	Yes	Yes	Yes	Yes	Yes
WIN 7, PROF. 64 bit	-	-	-	-	-	-	-	-	-	-	-	-
WIN 8, PROF. 32 bit	-	-	-	-	-	-	-	-	-	-	-	Yes
WIN 8, PROF. 64 bit	-	-	-	-	-	-	-	-	-	-	-	-

VID 610	8.1	8.3	8.7-811	8.9	8.11	8.17	8.19	8.21	8.23	9.1	9.3	9.5
WIN 98 / NT / ME / 2000	-	-	-	-	-	-	-	-	-	-	-	-
WIN XP	-	-	-	-	-	-	-	-	-	-	Yes	Yes
WIN VISTA BE 32 bit	-	-	-	-	-	-	-	-	-	-	-	-
WIN 7, PROF. 32 bit	-	-	-	-	-	-	-	-	-	-	Yes	Yes
WIN 7, PROF. 64 bit	-	-	-	-	-	-	-	-	-	-	-	-
WIN 8, PROF. 32 bit	-	-	-	-	-	-	-	-	-	-	-	Yes
WIN 8, PROF. 64 bit	-	-	-	-	-	-	-	-	-	-	-	-

VID 620 and VID 625	8.1	8.3	8.7-811	8.9	8.11	8.17	8.19	8.21	8.23	9.1	9.3	9.5
WIN 98 / NT / ME / 2000	-	-	-	-	-	-	-	-	-	-	-	-
WIN XP	-	-	-	-	-	-	-	-	-	-	-	-
WIN VISTA BE 32 bit	-	-	-	-	-	-	-	-	-	-	-	-
WIN 7, PROF. 32 bit	-	-	-	-	-	-	-	-	-	-	Yes	Yes
WIN 7, PROF. 64 bit	-	-	-	-	-	-	-	-	-	-	-	-
WIN 8, PROF. 32 bit	-	-	-	-	-	-	-	-	-	-	-	Yes
WIN 8, PROF. 64 bit	-	-	-	-	-	-	-	-	-	-	-	-

# Compatibility list

## Operating system versus MMS software / OLD video options

PULSAR	8.1	8.3	8.7-811	8.9	8.11	8.17	8.19	8.21	8.23	9.1	9.3	9.5
WIN 98	Yes	-	-	-	-	-	-	-	-	-	-	-
WIN NT	-	-	-	-	-	-	-	-	-	-	-	-
WIN ME	Yes	-	-	-	-	-	-	-	-	-	-	-
WIN 2000	Yes	Yes	Yes	Yes	Yes	Yes	Yes	-	-	-	-	-
WIN XP, VISTA BE, WIN 7 & 8	-	-	-	-	-	-	-	-	-	-	-	-

Meteor I	8.1	8.3	8.7-811	8.9	8.11	8.17	8.19	8.21	8.23	9.1	9.3	9.5
WIN 98	-	-	-	-	-	-	-	-	-	-	-	-
WIN NT	-	-	-	-	-	-	-	-	-	-	-	-
WIN ME	-	-	-	-	-	-	-	-	-	-	-	-
WIN 2000	-	-	-	-	-	-	-	-	-	-	-	-
WIN XP, VISTA BE, WIN 7 & 8	-	-	-	-	-	-	-	-	-	-	-	-

VID 400 Meteor II	8.1	8.3	8.7-811	8.9	8.11	8.17	8.19	8.21	8.23	9.1	9.3	9.5
WIN 98	Yes	-	-	-	-	-	-	-	-	-	-	-
WIN NT	-	-	-	-	-	-	-	-	-	-	-	-
WIN ME	Yes	-	-	-	-	-	-	-	-	-	-	-
WIN 2000	Yes	Yes	Yes	Yes	Yes	Yes	Yes	-	-	-	-	-
WIN XP	Yes	Yes	Yes	Yes	Yes	Yes	Yes	Yes	Yes	Yes	Yes	Yes
WIN VISTA BE, WIN 7 & 8	-	-	-	-	-	-	-	-	-	-	-	WIN 7-32

VID 600 Helios	8.1	8.3	8.7-811	8.9	8.11	8.17	8.19	8.21	8.23	9.1	9.3	9.5
WIN 98	-	-	-	-	-	-	-	-	-	-	-	-
WIN NT	-	-	-	-	-	-	-	-	-	-	-	-
WIN ME	-	-	-	-	-	-	-	-	-	-	-	-
WIN 2000	-	-	-	-	-	-	-	-	-	-	-	-
WIN XP	-	-	Yes	Yes	Yes	Yes	Yes	Yes	Yes	Yes	Yes	Yes
WIN VISTA BE 32 bit	-	-	-	-	-	-	-	-	-	-	-	-
WIN 7, PROF. 32 bit	-	-	-	-	-	-	-	Yes	Yes	Yes	Yes	Yes
WIN 7, PROF. 64 bit	-	-	-	-	-	-	-	-	-	-	-	-
WIN 8, PROF. 32 & 64 bit	-	-	-	-	-	-	-	-	-	-	-	-

# MMS Software support for systems

MMS system	supported since software build	supported since (YYYY-MM-DD)	remark
Alpha with CIM	4.0		
Alpha with puller	3.06		
Flowmaster	1.0	2005-08-01	improved software since 1.0 build 1133
Flowmaster (multiple)	2.0	2007-04	
Flowmaster data on Network	2.0	2007-09-05	
Flowmaster Scanmaster integration	2.5	2011-12-16	
Luna	8.2 build 1021	2005-03-01	
Nexam	9.1 first build	2013-02-20	
Ohmega	8.6 build 1297	2006-10-13	
Ohmega R	8.9 first build	2008-03	
Ohmega R pH	8.21 first build	2011-12-12	
Scanmaster (integration with Solar)	8.19 build 2136	2010-09	
Solar Blue	8.11 first build	2008-07	
Solar Blue-Luna	9.1 first build	2013-03-27	
Solar GI	8.1 build 704	2002-09-17	see also CIM swallow & respiration
Solar Smart update (manual pull for UPP & GYN)	8.6 build 1299	2006-10-19	
Solar Smart update (manual pull for UPP)	8.6 build 1268	2006-07-20	
Solar Uro	8.1 build 704	2002-09-17	
Solar-Luna	8.9 first build	2008-03	

# MMS Software support for modules

MMS module / option	supported since software build	supported since (YYYY-MM-DD)	remark
BT-Smart Dongle	9.3 first build	2014-09-23	
BT Flowsensor	8.3 build 1077	2005-06-21	
BT Flowsensor	8.3 build 1117	2005-10-07	Also suitable for service pack 2
BT Puller	8.9 first build	2008-03	
CIM AUX	8.4 first build	2005-07	Module for Stationary Impedance
CIM AUX HRIM	8.23 first build	2012-04-02	
CIM Barostat	8.4 first build	2005-07	
CIM Conductance	8.1 build 857	2003-12-01	
CIM H4E	8.1 build 857	2003-12-01	
CIM Lemo-14	8.1 build 998	2004-12-16	
CIM M2	8.1 build 998	2004-12-16	
CIM M4	8.1 build 857	2003-12-01	
CIM M4E	8.1 build 857	2003-12-01	
CIM Solar, revised EMG	8.1 build 902	2004-03-29	with smoother EMG
CIM Swallow & Respiration	8.1 build 857	2003-12-01	
Footswitch Neuro Module	8.1 build 815	2003-07-14	
Footswitch video	8.1 build 704	2002-09-17	
IR Receiver (RCV-3000)	8.23 build 2448	2013-07-23	
MPI	8.9 first build	2008-03	
MPP	8.7 first build	2007-02	
MPP Plus	8.21 first build	2011-12-12	
Network Monitor	7.3		
Neuro Module (HEM)	8.1 build 807	2003-06-12	
Neuro Module (HEM) & USA key	8.2 build 977	2004-10-19	with 'USA' key support
Neuro Module (module only)	8.2 build 924	2004-06-25	with U2M-2
RC-1200	8.11 build 1875	2009-07-14	
RC-1500	9.1 first build	2013-02-20	
RC-1600	9.3 first build	2014-09-23	
Solar EGG	8.11 build 1787	2008-10	improved software since 8.9
U2M	8.2 build 951	2004-09-14	
VID 200 & VID 300	8.2 first build		new board, therefore 8.2 is necessary
VID 400	8.3 first build	2005-06	combination of old codes works on 8.1
VID 410	8.7 first build	2007-02	
VID 500	8.1 first build		combination of old codes works on 8.1
VID 600	8.7 first build	2007-02	
WPM	8.19 first build	2010-12	
WPU-L4	9.3 first build	2014-09-23	



LABORIE USA

Tel.: +1 802 857 1300

800 522 6743

Email: [usmarketing@laborie.com](mailto:usmarketing@laborie.com)

LABORIE EUROPE/INTERNATIONAL

Tel.: +31 53 4803700

Email: [info@laborie.com](mailto:info@laborie.com)

LABORIE HEADQUARTERS

Tel.: +1 905 612 1170

Email: [marketing@laborie.com](mailto:marketing@laborie.com)

